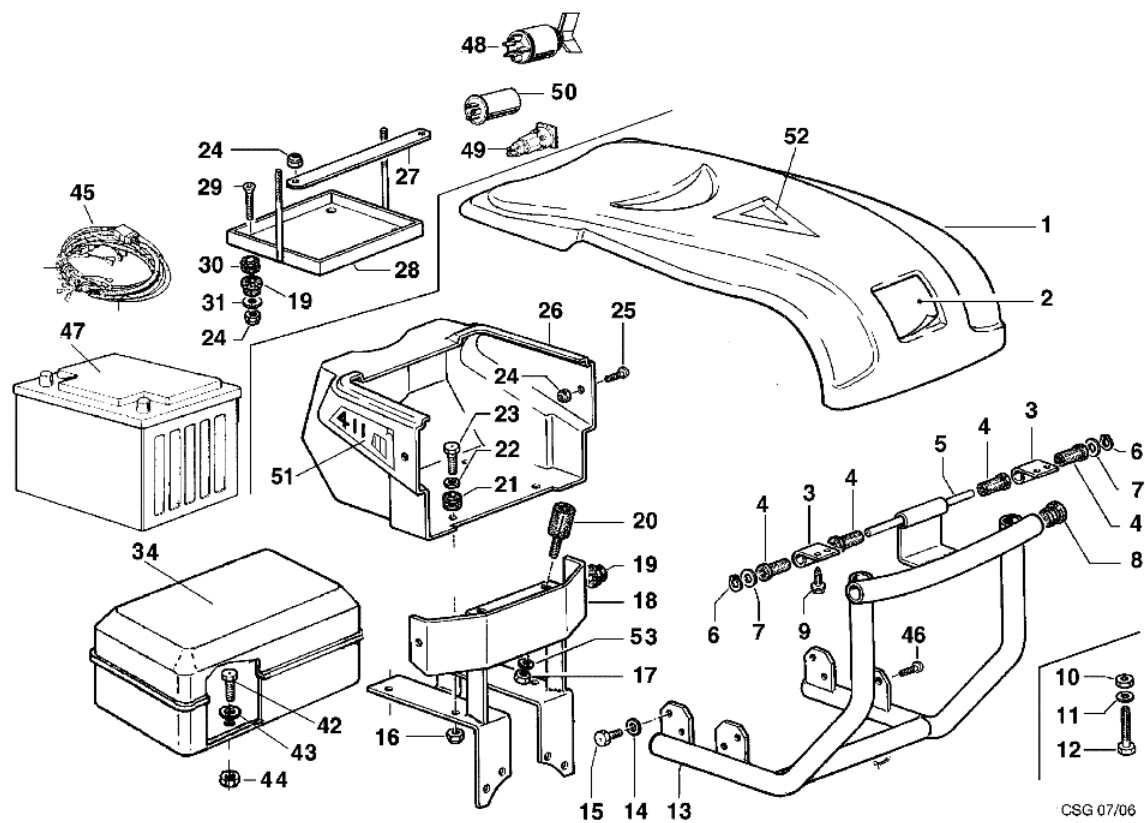


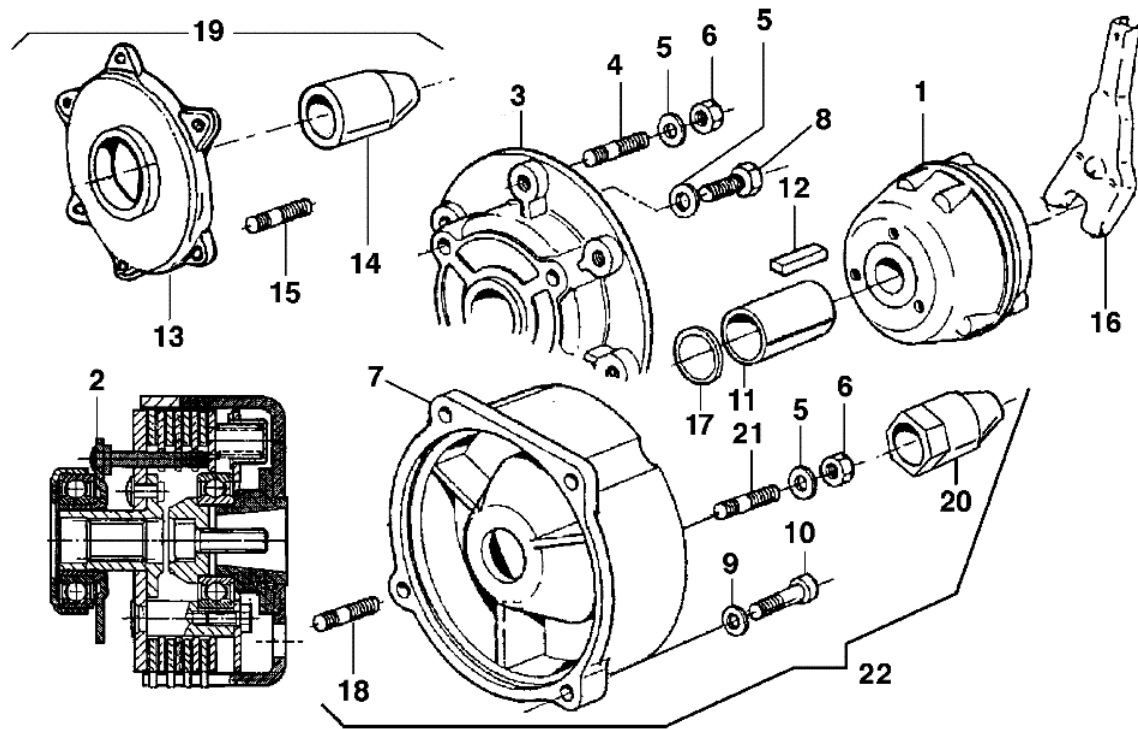
Ref.	O.ty	Item number	Description	Validity from	Validity till	Notes	Bulletin
1	1	YN6255100	Screw				
2	1	3916008R	Washer				
3	1	YF1292116	Hood				
4	1	F1362122	Mark (yellow) "b"	04/2004			
5	1	K4301950	Main bord				
6	1	N6221000	Screw				
7	1	3806035	Screw			Yanmar L70; Yanamr L100; Yanmar L100 AE; 6LD400	
8	1	K4301960	Tire			Yanmar L100; Yanmar L100 AE	
8	1	K4305290	Tire				
9	1	F1292123	Support			6LD400; 6LD400 AE; 6LD435 AE; 6LD435	
9	1	F1292134	Support			MC 71	
10	1	3914006R	Nut			Yanmar L70; 6LD400; 6LD400 AE; 6LD435 AE; 6LD435	
11	1	3806065	Screw				
12	1	YN4358500	Washer			Yanmar L70; 6LD400; 6LD400 AE; 6LD435 AE; 6LD435	
12	1	YN4365400	Washer			MC 71	
13	1	F1292122	Support			6LD400; 6LD435; MC 71; Yanmar RL100 vers el	
13	1	F1292159	Support			6LD400; 6LD400 AE	
14	1	F1292112	Support			6LD435; 6LD435 AE	
14	1	F1292135	Support			MC 71	
14	1	F1292160	Support			6LD400; 6LD400 AE	
15	1	F1292113	Hooking spring			6LD400; 6LD400 AE; 6LD435 AE; 6LD435	
16	1	3914010	Nut			6LD400; 6LD400 AE; 6LD435 AE; 6LD435	
17	1	N6300000	Screw			6LD435; 6LD435 AE	
17	1	N6302700	Screw			6LD400; 6LD400 AE	
17	1	YN6249510	Screw			MC 71	
18	1	YN4365400	Washer			6LD435; 6LD435 AE	
19	1	F1292111	Silent block			6LD400; 6LD400 AE; 6LD435 AE; 6LD435	
20	1	320000028	Nut				
21	1	K4301980	Band			6LD400; 6LD400 AE; 6LD435 AE; 6LD435	
22	1	K4800580	Protective guard			6LD400; 6LD400 AE; 6LD435 AE; 6LD435	
23	1	F1292103	Hood				
23	1	F1292602	Hood			AE	
24	1	YN6267000	Screw				
25	1	N0400530	Grommet				
26	1	F1292114	Support			Yanmar L70; 6LD400; 6LD400 AE; 6LD435 AE; 6LD435	
28	1	3914006R	Nut				
29	1	N6218600	Screw				
30	1	F0752170	Buffer				
31	1	F1292140	Main bord				
32	1	3914006R	Nut				
33	1	YN4371100	Washer			6LD400	
34	1	K4804570	Cable			6LD400	
35	1	YN5901000	Clamp				
36	1	F1292606	Eietric starter			6LD400; 6LD435; MC71; Yanmar RL100 vers el	
37	1	F1292170	Tire			Yanmar L70; Yanamr L100; Yanmar L100 AE; 6LD400; 6	
38	1	F1292197	Insert			Yanmar L70; Yanamr L100; Yanmar L100 AE; 6LD400	
39	1	F1292199	Support			Yanmar L100; Yanmar L100 AE	
39	1	F1292200	Support			Yanmar L70	
40	1	N5267400	Cap			Yanmar L70; Yanamr L100; Yanmar L100 AE; 6LD400	
41	1	F1292198	Support			Yanmar L70	
42	1	F1292179	Support			Yanmar L100; Yanmar L100 AE	
43	1	F1292201	Support			Yanmar L100; Yanmar L100 AE	
44	1	F0752159	Silent block			Yanmar L70; Yanamr L100; Yanmar L100 AE; 6LD400	
45	1	3806035	Screw			Yanmar L70; 6LD400; 6LD400 AE; 6LD435 AE; 6LD435	
46	1	YN4365400	Washer			Yanmar L70; Yanamr L100; Yanmar L100 AE; 6LD400	
47	1	F1362125	Mark				
48	1	F1292600	Battery casing			6LD400; AE	
49	1	F1292601	Main bord			6LD400; AE	
50	1	N6233000	Screw			6LD400; AE	
51	1	N0400530	Grommet			6LD400; AE	
52	1	YN4361900	Washer			6LD400; AE	

53	1	F1292186	Mark	DX; RIGHT
53	1	F1292187	Mark	SX; LEFT
54	1	N2540020	Switch	
55	1	N2552370	Plug	
56	1	N2552250	Warning light	
57	1	N2515450	Battery	

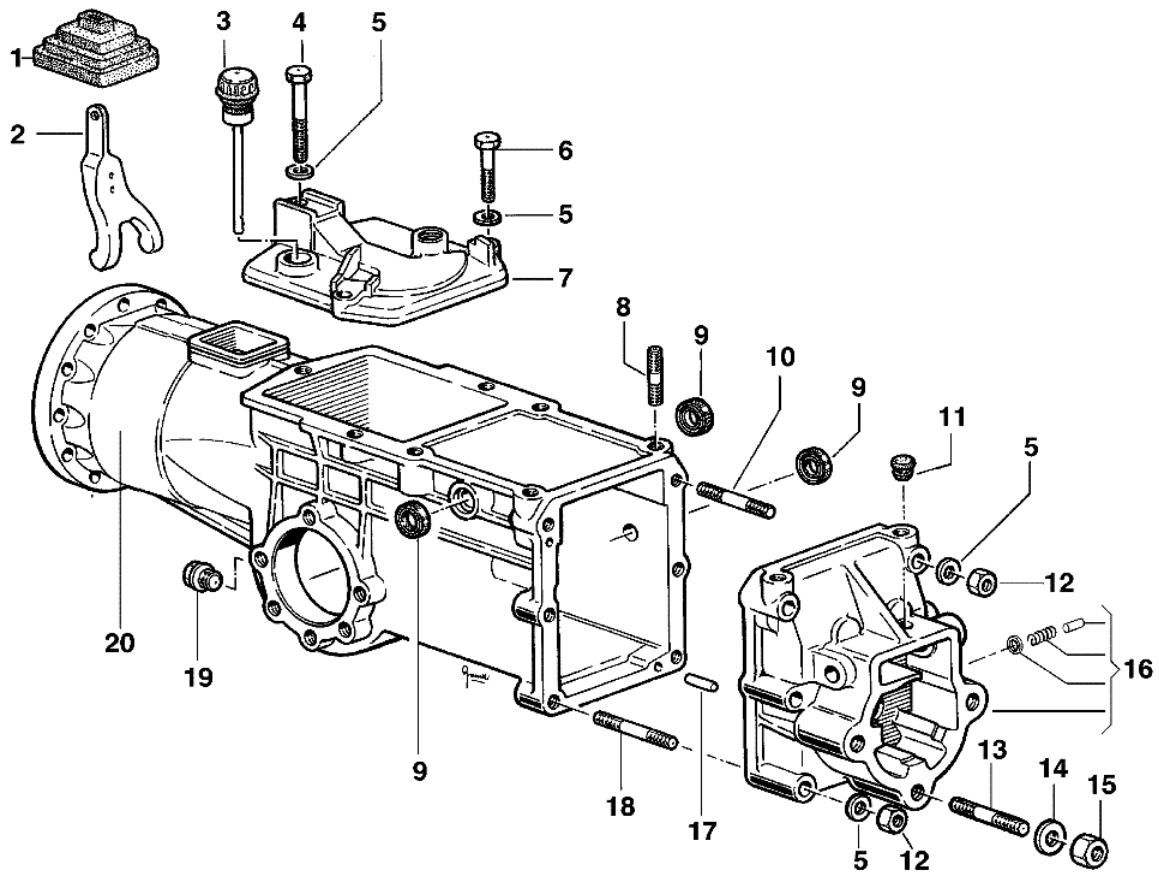


Ref.	Q.ty	Item number	Description	Validity from	Validity till	Notes	Bulletin
1	1	YF1292127	Cowling				
1	1	F1292102	Cowling				
2	1	F1292149	Mark			STAUB	
2	1	F1362122	Mark (yellow) "b"	04/2004			
3	1	F1292105	Mount				
4	1	N0400700	Bushing				
5	1	F1292106	Pin				
6	1	N0102900	Ring				
7	1	3916010	Washer				
8	1	N5267400	Cap				
9	1	N6243654	Screw				
10	1	3914010	Nut			CA240; Honda GX160	
10	1	006000091	Nut			15LD400; 15LD400 AE; ACT280; 15LD315; 15LD350; 15L	
11	1	3916008R	Washer			CA240; Honda GX160	
11	1	YN4376400	Washer			15LD400; 15LD400 AE; ACT280; 15LD315; 15LD350; 15L	
12	1	N6294400	Screw			CA240; Honda GX160	
12	1	N6354300	Screw			ACT280; Honda GX270; Kohler CS8.5; Kohler CS8.5 AE	
12	1	YN6278500	Screw			CA240; Honda GX160	
12	1	YN6335900	Screw			15LD400; 15LD400 AE; 15LD315; 15LD350; 15LD350 AE	
13	1	F1292107	Support			15LD315; 15LD350	
13	1	F1292108	Support			ACT280	
13	1	F1292109	Support			ALN330	
13	1	F1292115	Support			IM359; A349; CA340	
13	1	F1292124	Support			Honda GX270	
13	1	F1292125	Support			LGA225; CA240	
13	1	F1292129	Support			Honda GX160	
13	1	F1292130	Support			A220	
13	1	F1292175	Support			15LD400; 15LD400 AE	
13	1	F1292217	Support			Kohler CS8.5	
14	1	YN4365400	Washer			IM359; IM349; IM359 AE; A349 AE; CA340; A220; A230	
15	1	3806063	Screw			IM359; IM349; IM359 AE; A349 AE; CA340	
15	1	3806065	Screw			A220; A230; LGA225	
16	1	3914010	Nut			15LD400; 15LD400 AE; ACT280; 15LD315; 15LD350; 15L	
17	1	320000028	Nut				
18	1	F1292104	Support			Honda GX270; IM359; IM349; IM359 AE; A349 AE; CA34	
18	1	F1292126	Support			CA240; Honda GX160; LGA225	
18	1	F1292154	Support			A220; A230	
18	1	F1292179	Support	04/2004		15LD400; Kohler CS8.5; Kohler CS8.5 AE	
19	1	F0752170	Buffer				
20	1	F0752159	Silent block				
21	1	N0400530	Grommet			15LD400; 15LD400 AE; ACT280; 15LD315; 15LD350; 15L	
22	1	3916008R	Washer			15LD400; 15LD400 AE; ACT280; 15LD315; 15LD350; 15L	
23	1	YN6267000	Screw			15LD400; 15LD400 AE; ACT280; 15LD315; 15LD350; 15L	
24	1	3914006R	Nut			15LD400; 15LD400 AE; ACT280; 15LD315; 15LD350; 15L	
25	1	N6218600	Screw			15LD400; 15LD400 AE; ACT280; 15LD315; 15LD350; 15L	
26	1	F1292103	Hood			15LD400; 15LD400 AE; ACT280; 15LD315; 15LD350; 15L	
26	1	F1292602	Hood			Avviamento elettrico; electric starter	
26	1	F1292128	Hood				
27	1	F1292601	Main bord			Avviamento elettrico; electric starter; 15LD400; 1	
28	1	F1292600	Battery casing			Avviamento elettrico; electric starter; 15LD400; 1	
29	1	N6233000	Screw			Avviamento elettrico; electric starter; 15LD400; 1	
30	1	N0400530	Grommet			Avviamento elettrico; electric starter; 15LD400; 1	
31	1	YN4361900	Washer			Avviamento elettrico; electric starter; 15LD400; 1	
34	1	F1221601	Box			CA240; Honda GX160; LGA225; A220; A230	
42	1	3806035	Screw			CA240; Honda GX160; LGA225; A220; A230; Kohler CS8	
43	1	YN4358500	Washer			CA240; Honda GX160; LGA225; A220; A230; Kohler CS8	
44	1	3914006R	Nut			CA240; Honda GX160; LGA225; A220;	

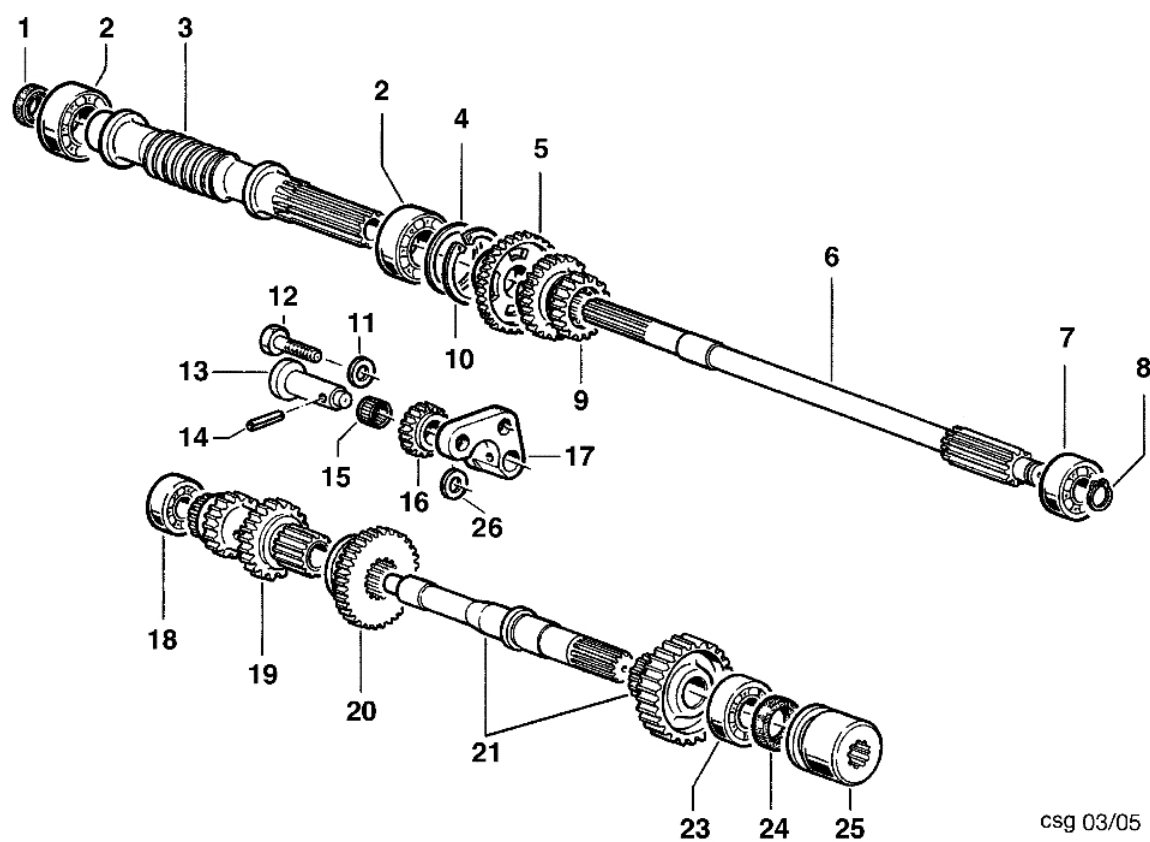
				A230; Kohler CS8
45	1	F1292603	Electric starter	IM359; A349; Kohler CS8.5
45	1	F1292604	Electric starter	ALN330
45	1	F1292606	Electric starter	15LD315; 15LD350; 15LD400; 15LD440
46	1	YN6272400	Screw	A220; A230
47	1	N2515450	Battery	
48	1	N2540020	Switch	
49	1	N2552250	Warning light	
50	1	N2552370	Plug	
51	1	F1292186	Mark	DX; RIGHT
51	1	F1292187	Mark	SX; LEFT
52	1	F1362125	Mark	
53	1	YN4365400	Washer	



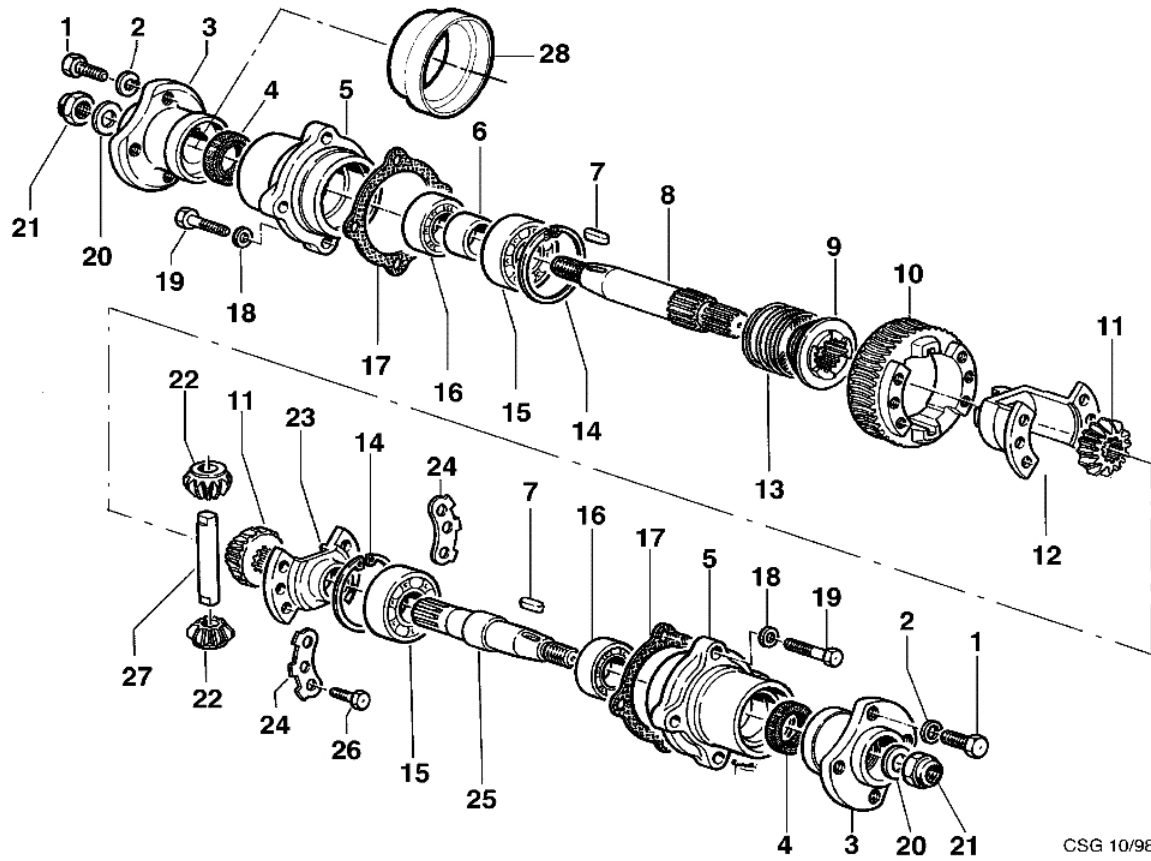
Ref.	O.ty	Item number	Description	Validity from	Validity till	Notes	Bulletin
1	1	F1200003	Clutch			IM359; CA340; CA240; LGA225	
1	1	F1200004	Clutch			ALN330; 15LD315; A220; A230	
1	1	YF1200016	Clutch			Honda GX160; B&S; Vanguard	
1	1	YF1200032	Clutch				
2	1	F1090002	Multiple disk clutch			(15LD400; 15LD440; 15LD400 AE; (dal 03/2004)); ACT	
2	1	F1090007	Multiple disk clutch			Yanmar L70; yanmar L100; 15LD350; (15LD400 AE; 15L	
2	1	F1200006	Multiple disk clutch			Honda GX270; B&S; Vanguard; Kohler CS8.5	
3	1	F1050027	Flange			Honda GX160; B&S; Vanguard	
4	1	N3812500	Stud			Honda GX160; B&S; Vanguard	
5	1	YN4365400	Washer			Honda GX270; B&S; Vanguard; Kohler CS8.5; (15LD400	
6	1	320000028	Nut			Honda GX270; B&S; Vanguard; Kohler CS8.5; (15LD400	
7	1	F1050031	Flange			Honda GX270; B&S; Vanguard; Kohler CS8.5; (15LD400	
8	1	YN6243980	Screw			Honda GX160; B&S; Vanguard	
9	1	YN4376400	Washer			Honda GX270; B&S; Vanguard; Kohler CS8.5; (15LD400	
10	1	N6309790	Screw			Honda GX270; B&S; Vanguard; Kohler CS8.5; (15LD400	
11	1	F1050028	Spacer			Honda GX160; B&S; Vanguard; 15LD400 AE, 15LD400; 1	
11	1	F1050036	Spacer			Frizione vecchia; Old clutch; Honda GX270; B&S; Va	
12	1	N0648080	Key			Frizione con distanziale; clutch with spacer; Hond	
12	1	N0648090	Key			Frizione monoblocco; Single-block clutch; Honda GX	
12	1	YN0643410	Key			Honda GX160; B&S; Vanguard	
13	1	F1210001	Spacer			ALN330; 15LD315; A220; A230; Yanmar L70; yanmar L1	
14	1	F1210002	Spacer			ALN330; 15LD315; A220; A230; Yanmar L70; yanmar L1	
15	1	K8236004	Stud			ALN330; 15LD315; A220; A230; Yanmar L70; yanmar L1	
15	1	N3815300	Stud			Motore senza distanziale; Engine without spacer	
16	1	F0750011	Lever				
17	1	N5002870	Washer			Honda GX160; B&S; Vanguard	
18	1	N3815300	Stud			15LD400; 15LD440; 15LD400 AE (da 03/2004)	
19	1	P1200020	Spacer unit			ALN330; 15LD315; A220; A230; Yanmar L70; yanmar L1	
20	1	F1290007	Spacer			15LD400; 15LD440; 15LD400 AE (da 03/2004)	
21	1	N3812500	Stud			Honda GX270; B&S; Vanguard; Kohler CS8.5	
21	1	N3815300	Stud			(15LD400; 15LD440; 15LD400 AE;(da 03/2004)); Kohle	
22	1	P1200021	Spacer unit			(15LD400; 15LD440; 15LD400 AE;(da 03/2004))	



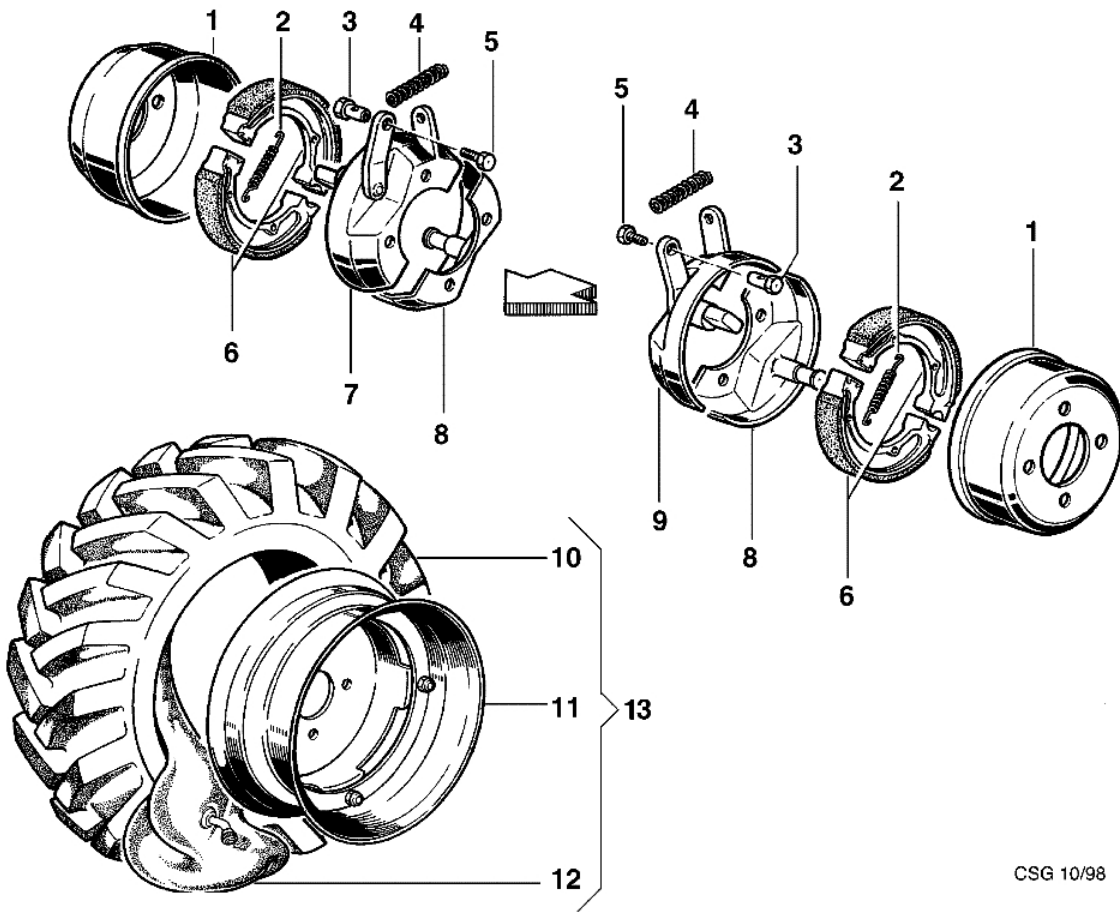
Ref.	O. ty	Item number	Description	Validity from	Validity till	Notes	Bulletin
1	1	F0751646	Bellows				
2	1	F0750011	Lever				
3	1	F1290819	Cap				
4	1	N6294400	Screw				
5	1	YN4365400	Washer				
6	1	3806074R	Screw				
7	1	F1290818	Cover				
8	1	N3812500	Stud				
9	1	YN0203000	Ring				
10	1	N3825400	Stud				
11	1	F0750835	Cap				
12	1	N1458800	Nut				
13	1	N3861500	Stud				
14	1	YN4387700	Washer				
15	1	N1470500	Nut				
16	1	YF1290817	Set cover				
17	1	YN5124300	Pin				
18	1	N3825750	Stud				
19	1	YN5254000	Oil cap				
20	1	F1290801	Speed-change gear box				



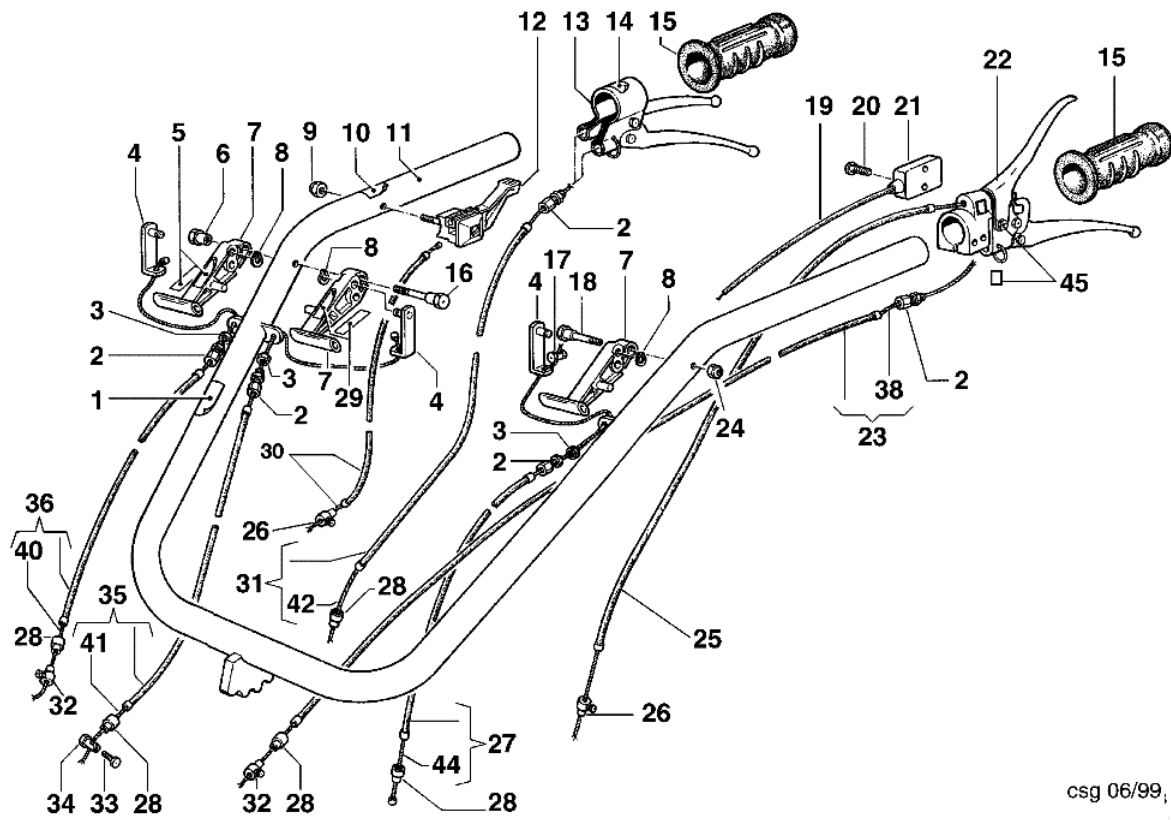
Ref.	O.ty	Item number	Description	Validity from	Validity till	Notes	Bulletin
1	1	N0204750	Gasket				
2	1	N1270751	Bearing				
3	1	F1290800	Shaft				
4	1	N5010200	Washer				
5	1	F1290812	Idler gear				
6	1	F1290811	Shaft				
7	1	N1257700	Bearing				
8	1	YN0110500	Seeger				
9	1	F1290813	Gear				
10	1	N0136900	Seeger				
11	1	N4376300	Washer				
12	1	N6327500	Screw				
13	1	F1290803	Pin				
14	1	N5115000	Pin				
15	1	3037006	Roller cage				
16	1	F1290804	Idler gear				
17	1	F1290807	Support				
18	1	N1251500	Bearing				
19	1	F1290810	Gear				
20	1	F1290805	Gear				
21	1	R1290814	Compl. shaft				
23	1	YN1263700	Bearing				
24	1	N0207300	Ring				
25	1	F1290816	Sleeve				
26	1	N5001900	Washer				



Ref.	O.ty	Item number	Description	Validity from	Validity till	Notes	Bulletin
1	1	N6322000	Screw				
2	1	3819014	Grower				
3	1	F1290211	Wheel hub				
4	1	YN0209720	Ring				
5	1	F1290209	Support				
6	1	F1290210	Spacer				
7	1	YN0646800	Key				
8	1	F1290207	Axle shaft			DX; RIGHT	
9	1	F1290201	Sleeve				
10	1	F1290205	Wheel				
11	1	F1290203	Rim				
12	1	F1290212	Half case				
13	1	N3138800	Spring				
14	1	N0140000	Seeger				
15	1	N1272500	Bearing				
16	1	YN1270700	Bearing				
17	1	F1050202	Gasket				
18	1	YN4366700	Grower				
19	1	322000001	Screw				
20	1	N4403000	Grower				
21	1	YN1479800	Nut				
22	1	F1290202	Sprocket				
23	1	F1290213	Cover				
24	1	F1290204	Plate				
25	1	F1290208	Axle shaft			SX; LEFT	
26	1	N6254500	Screw				
27	1	F1290206	Pin				
28	1	F1290227	Guard				

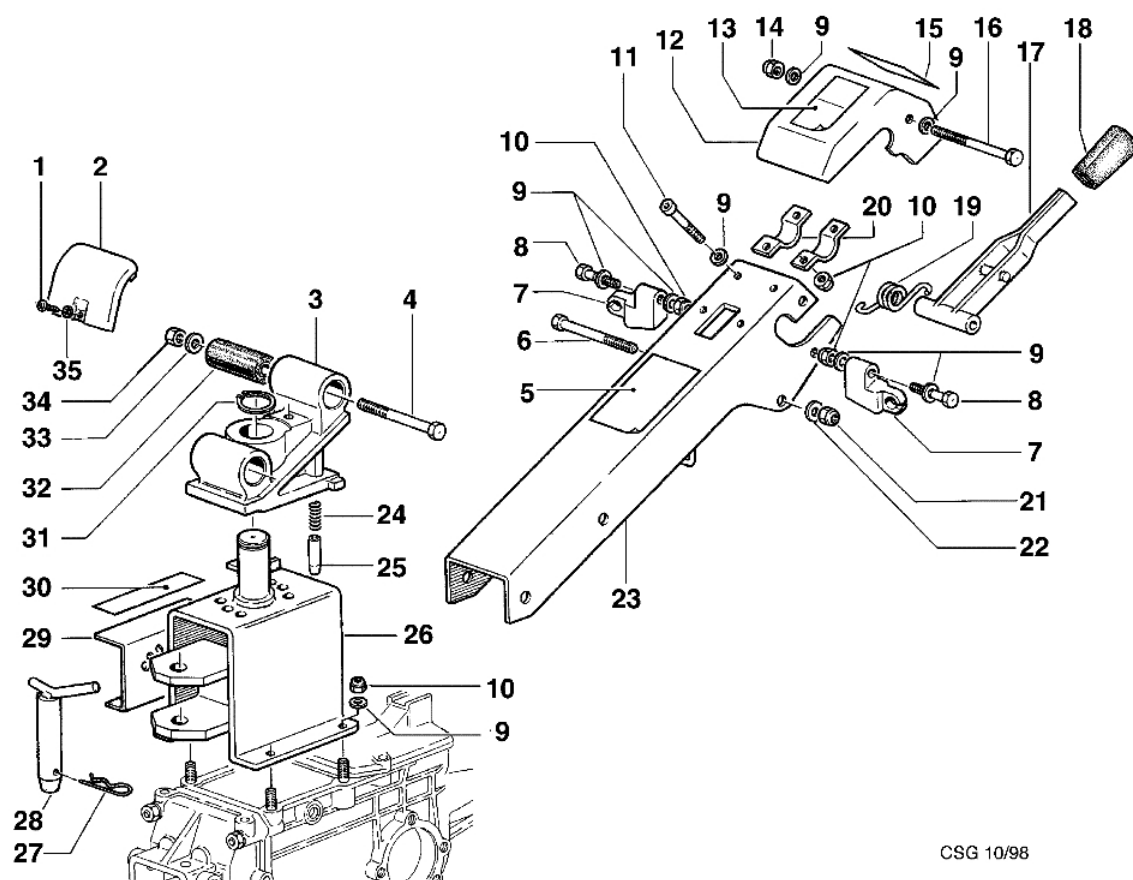


Ref.	O.ty	Item number	Description	Validity from	Validity till	Notes	Bulletin
1	1	N2382700	Cable reel				
2	1	YN3105100	Spring				
3	1	YF1290225	Clamp				
4	1	N3101050	Spring				
5	1	YN6199800	Screw				
6	1	YN2362700	Brake shoe				
7	1	F1290223	Half-cable reel				
8	1	F1290220	Half-cable reel				
9	1	F1290224	Half-cable reel				
10	1	N4852000	Tire			4.00-10	
10	1	N4853500	Tire			5.00-10	
11	1	N4901590	Rim			4.00/5.00-10	
12	1	N4881500	Inner tube			4.00-10	
12	1	YN4882500	Inner tube			5.00-10	
13	1	P0000605	Wheel kit			400-10	
13	1	P0000860	Wheel kit			500-10	

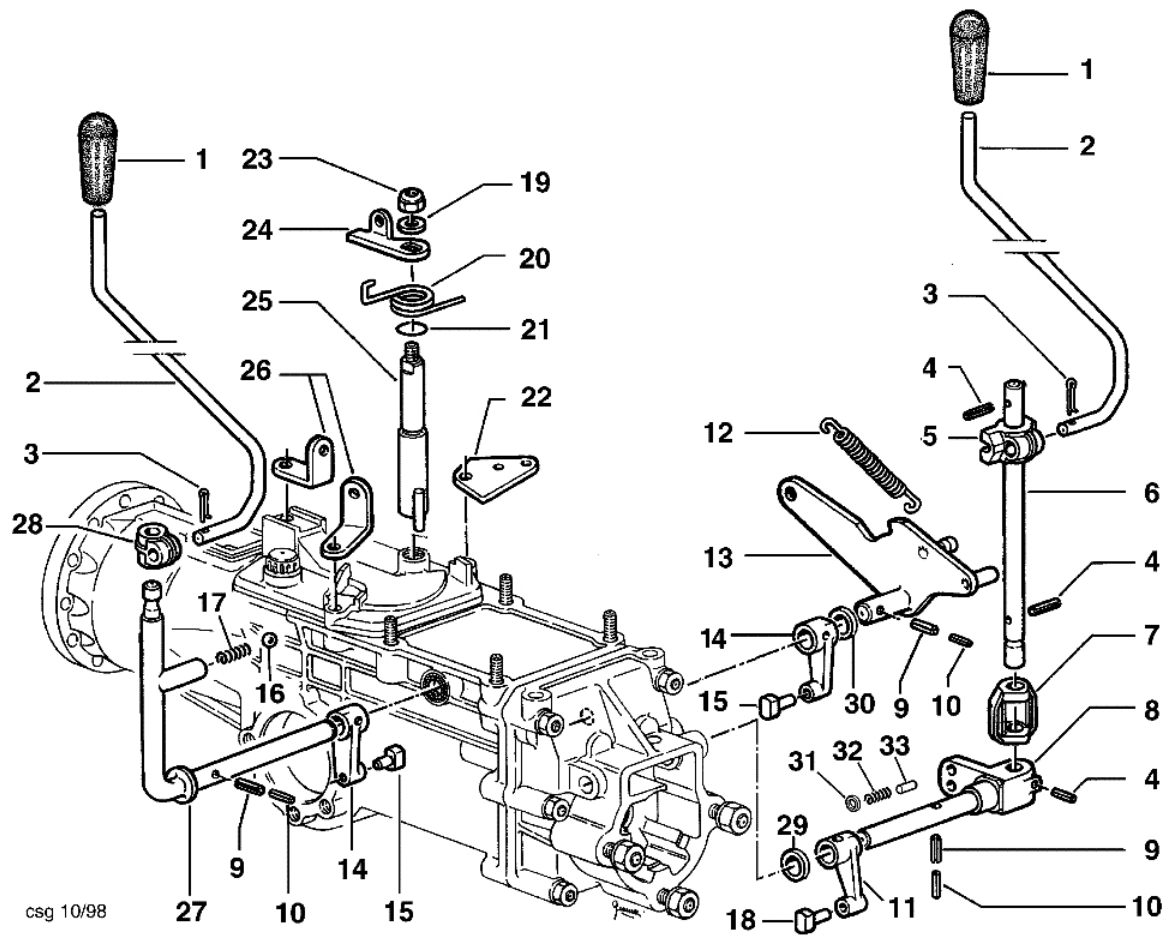


csg 06/99,

Ref.	O.ty	Item number	Description	Validity from	Validity till	Notes	Bulletin
1	1	YN5380870	Mark (Instruction)				
2	1	YN5801000	Adjuster assy				
3	1	3911008	Nut				
4	1	F1291619	Frame				
5	1	F1291649	Plate				
6	1	F1291617	Bushing				
7	1	F1291614	Lever				
8	1	N1734000	Ring				
9	1	3914006R	Nut				
10	1	YN5380805	Mark (Accelerator)				
11	1	F1291640	Handle kit				
12	1	YN2803650	Throttle				
13	1	N2806200	Handle				
14	1	YN5380665	Mark (brake)				
15	1	YN2847300	Knob				
16	1	F1291616	Pin				
17	1	N5901500	Clamp				
18	1	F1291615	Pin				
19	1	F1182601	Cable			Motori benzina; Gasoline engines	
20	1	N6182150	Screw			Motori benzina; Gasoline engines	
21	1	N2542360	Switch			Motori benzina; Gasoline engines	
22	1	N2806110	Handle				
23	1	N5488035	Transmission				
24	1	3914010	Nut				
25	1	N5476600	Transmission			Motori diesel; Diesel engines	
25	1	N5477050	Transmission			15LD400; Yanmar L70; Yanmar L100	
26	1	F1300004	Clamp			Honda GX270; Vanguard; Kohler CS8.5	
26	1	YN5901000	Clamp				
27	1	N5480900	Transmission				
28	1	YN5852100	Clamp				
29	1	F1291648	Plate				
30	1	N5464160	Transmission			15LD400; Yanmar L70; Yanmar L100	
30	1	N5464600	Transmission			A220; A230	
30	1	N5467270	Transmission			ALN330; CA340; Honda GX270; LGA225; Honda GX160; V	
30	1	N5467270	Transmission			15LD315; 15LD350; IM350; IM359; ACT280; 6LD400; 6L	
31	1	N5491250	Transmission				
32	1	YN5901600	Clamp				
33	1	YN6199800	Screw				
34	1	YF1290225	Clamp				
35	1	N5483810	Transmission				
36	1	N5485405	Transmission				
38	1	N5634650	Rope				
40	1	N5632500	Rope				
41	1	N5632500	Rope				
42	1	N5638360	Rope				
44	1	N5638500	Rope				
45	1	YN5380660	Mark (Clutch)				

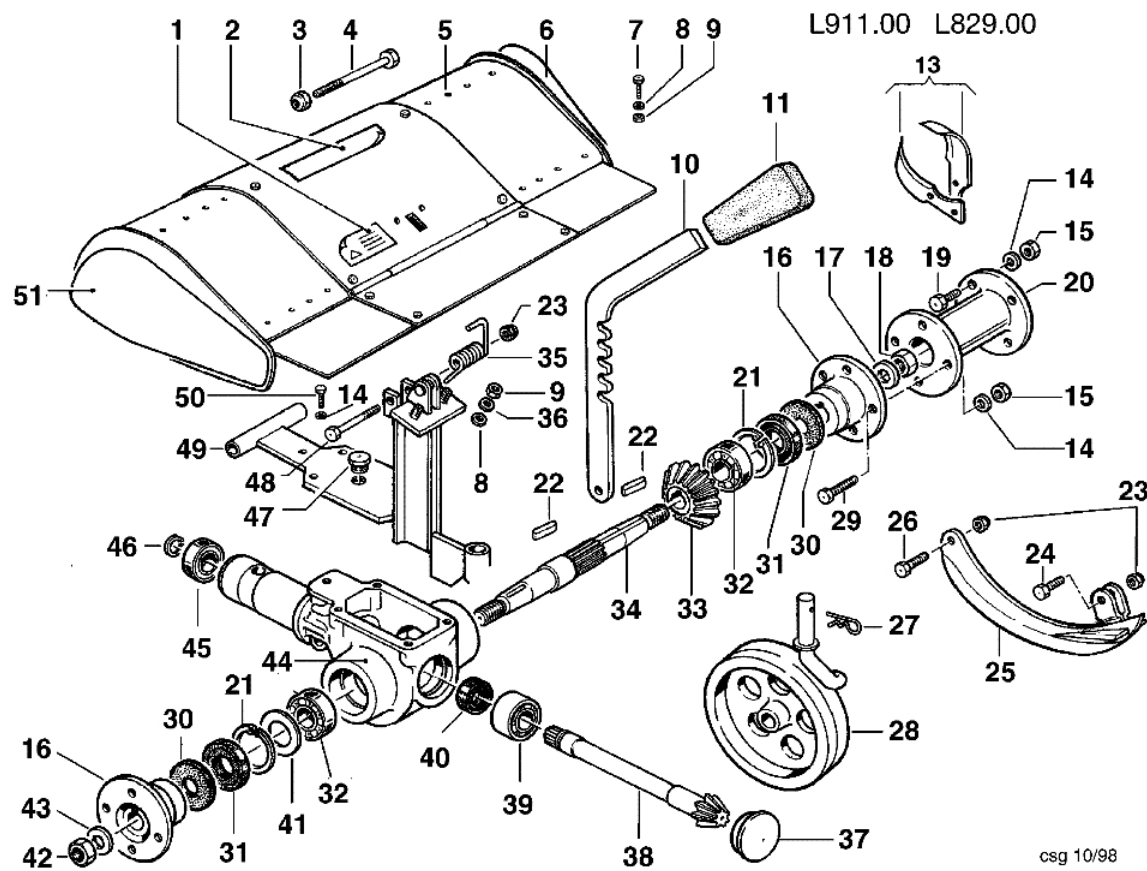


Ref.	O.ty	Item number	Description	Validity from	Validity till	Notes	Bulletin
1	1	N6192200	Screw				
2	1	F1291651	Cover				
3	1	R0000113	Grip-end				
4	1	N6407550	Screw				
5	2	F1292185	Mark	04/2004			
6	1	YN6361500	Screw				
7	1	F1255009A	Support				BT12-001-10/09
8	1	YN6278500	Screw				
9	1	3916008R	Washer				
10	1	N1458800	Nut				
11	1	N6289250	Screw				
12	1	YF1291643	Cover				
13	1	F1291647	Plate				
14	1	3914010	Nut				
15	1	F1291650	Plate				
16	1	N6306500	Screw				
17	1	YF1291636	Lever				
18	1	YN2840480	Knob				
19	1	YF1291634	Spring				
20	1	YF1151601	Clamp				
21	1	YN1464200	Nut				
22	1	3916010	Washer				
23	1	F1291642	Steering arm				
24	1	K3503380	Spring				
25	1	K3502650	Shutter				
26	1	F1291623	Support				
27	1	N5148800	Split pin				
28	1	F0751647	Pin				
29	1	F1291627	Selector swicth				
30	1	F1291646	Plate				
31	1	N0126400	Seeger				
32	1	N4924200	Silent block				
33	1	N4384360	Washer				
34	1	N1470500	Nut				
35	1	N4354200	Washer				



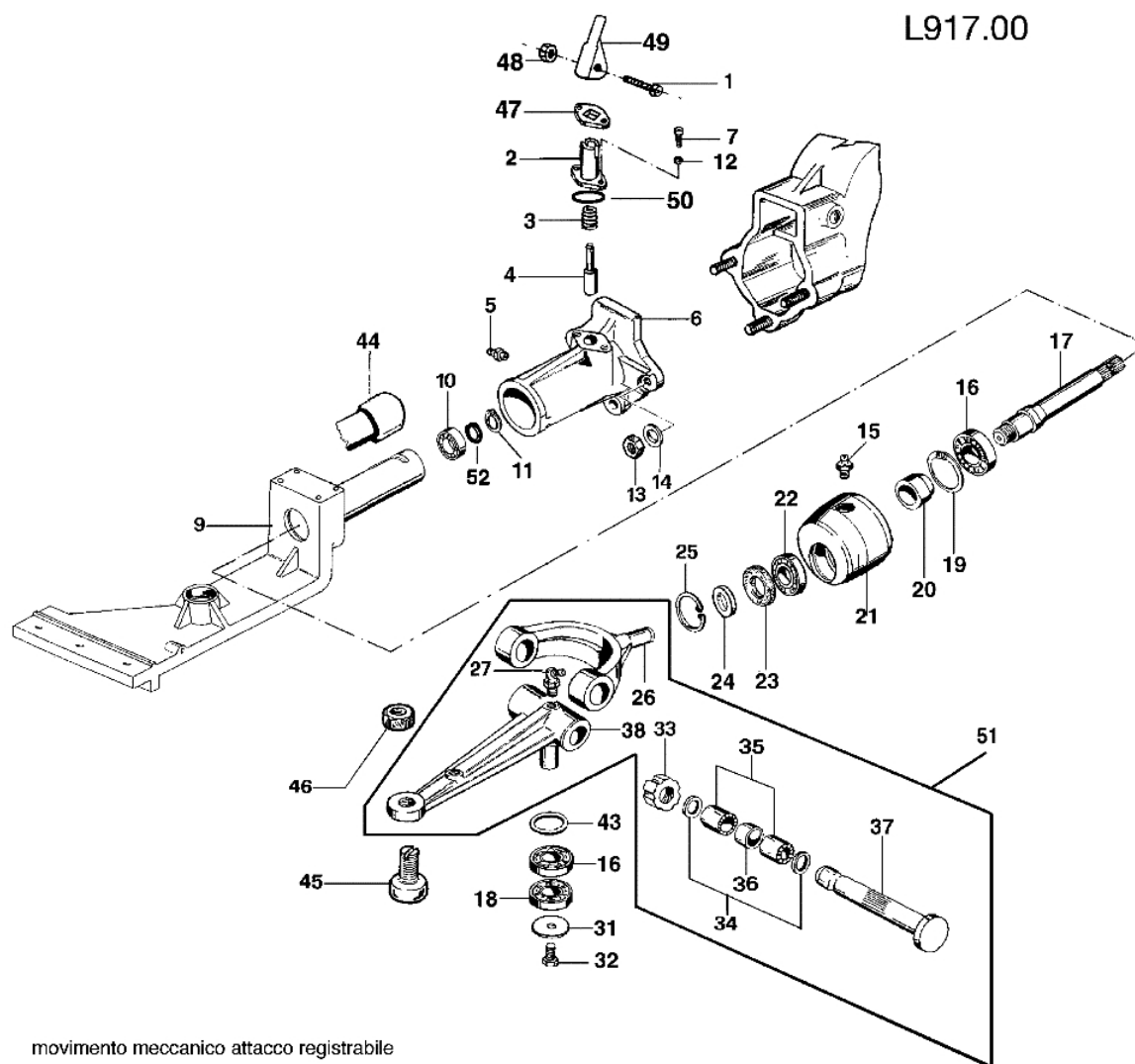
csg 10/98

Ref.	O.ty	Item number	Description	Validity from	Validity till	Notes	Bulletin
1	1	YN3753600	Knob				
2	1	F1291641	Handlebar				
3	1	YN1054900	Split pin				
4	1	N5113800	Pin				
5	1	F1291633	Support				
6	1	F1291637	Lever				
7	1	F1241614	Shoe				
8	1	F1291613	Pin				
9	1	YN5125500	Pin				
10	1	YN5109300	Pin				
11	1	F1051700	Lever				
12	1	YN3118060	Spring				
13	1	F1291612	Cam				
14	1	F1291603	Lever				
15	1	F1291604	Sliding block				
16	1	YN4745400	Ball				
17	1	YN3104250	Spring				
18	1	F1050831	Sliding block				
19	1	3916008R	Washer				
20	1	F1291602	Spring				
21	1	N0317900	Ring				
22	1	F1291607	Plate				
23	1	N1458800	Nut				
24	1	F1291606	Lever				
25	1	F1291600	Cam				
26	1	F1291605	Frame				
27	1	F1291632	Lever				
28	1	F1061633	Fix plate (Handlebar)				
29	1	N4394700	Washer				
30	1	K8491008	Washer				
31	1	N0281400	Ring				
32	1	N3101020	Spring				
33	1	F1291661	Cap				



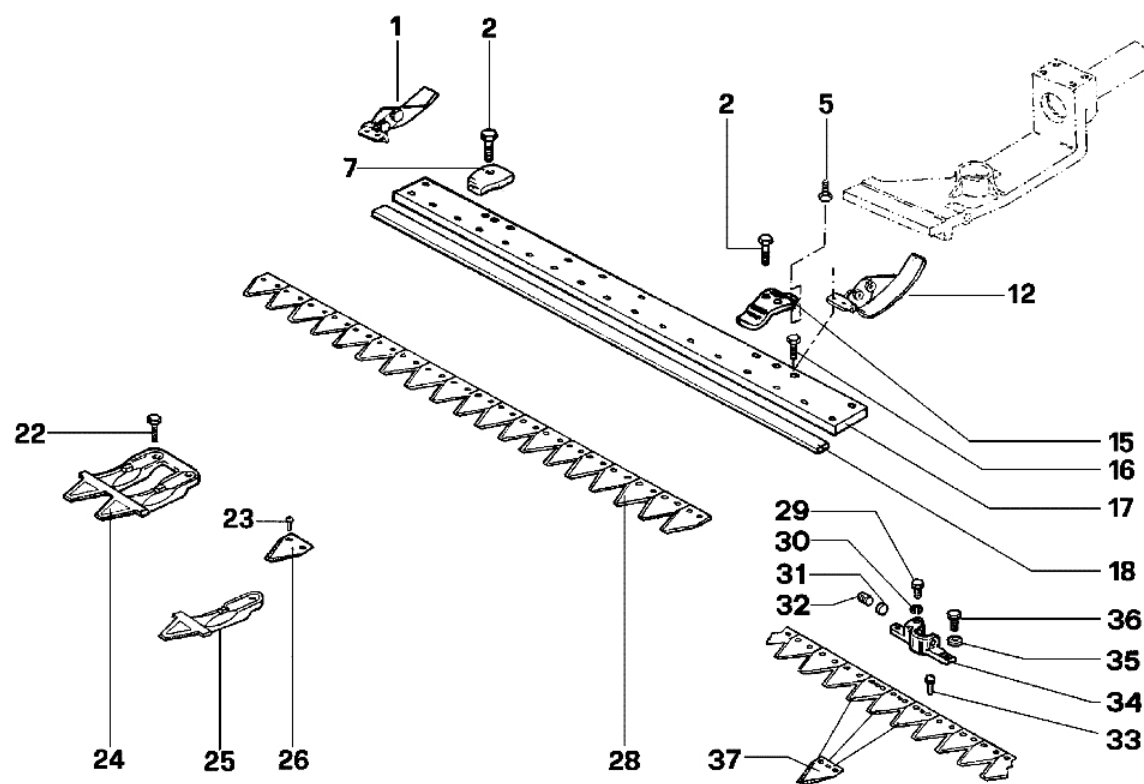
Ref.	O.ty	Item number	Description	Validity from	Validity till	Notes	Bulletin
1	1	F0015577	Mark (danger)				
2	1	F1152191	Mark	04/2004			
3	1	YN1476760	Nut				
4	1	N6433770	Screw				
5	1	F0015599	Hood			cm. 70	
5	1	F0015611	Hood			cm. 65	
6	1	F0017238	Mark	04/2004		DX; RIGHT;	
7	1	YN6248800	Screw				
8	1	YN4368500	Washer				
9	1	320000028	Nut				
10	1	F0015591	Tube				
11	1	N2840490	Knob				
13	1	R0000136	Cutters kit			cm. 65; DX + SX; RIGHT and LEFT;	
13	1	R0000138	Cutters kit			cm. 70; DX + SX; RIGHT and LEFT;	
14	1	N4366600	Grower				
15	1	N1457300	Nut				
16	1	F0015510	Support			cm. 70	
16	1	F0015547	Support			cm. 65	
17	1	N4418000	Washer				
18	1	N1482500	Nut				
19	1	N6262100	Screw			cm. 70	
19	1	YN6269100	Screw			cm. 65	
20	1	F0015515	Spacer			cm. 65	
20	1	F0015558C	Spacer			cm. 70	
21	1	YN0136800	Seeger				
22	1	YN0652200	Key				
23	1	YN1458020	Nut				
24	1	3806065	Screw				
25	1	F0015592	Cutter tool				
26	1	YN6267000	Screw				
27	1	N5149700	Split pin				
28	1	Z0020368	Wheel				
29	1	N6274000	Screw				
30	1	F0013525	Felt				
31	1	YN0210050	Gasket				
32	1	YN1270700	Bearing				
33	1	F0015582	Rim				
34	1	F0013531	Shaft				
35	1	F0015587	Spring				
36	1	YN4366700	Grower				
37	1	N5276700	Cap				
38	1	F0015583	Sprocket				
39	1	N1264051	Bearing				
40	1	N0207400	Ring				
41	1	N5006800	Washer				
42	1	N1482600	Nut				
43	1	N4418000	Washer				
44	1	F0015541	Tiller				
45	1	YN1263201	Bearing				
46	1	YN0114900	Seeger				
47	1	YN5254000	Oil cap				
48	1	N6294400	Screw				
49	1	F0015590	Cover				
50	1	N6255400	Screw				
51	1	F0017239	Mark	04/2004		SX; LEFT	

L917.00



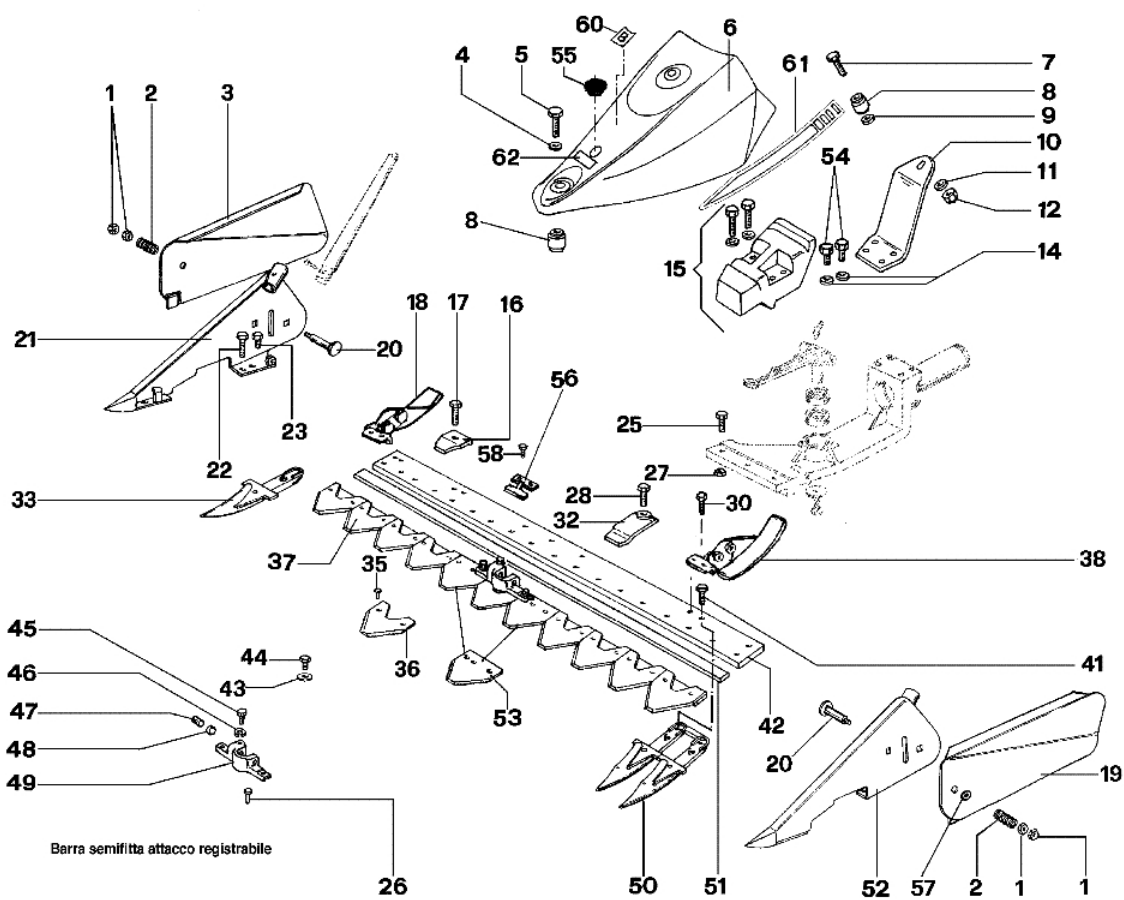
movimento meccanico attacco registrabile

Ref.	O. ty	Item number	Description	Validity from	Validity till	Notes	Bulletin
1	1	3801027	Screw				
2	1	F1294702	Slide				
3	1	N3118700	Spring				
4	1	F1054710	Shutter				
5	1	N2605600	Nipple				
6	1	L0100300	quickfit			Lungo; Long	
6	1	L0100700	quickfit			Corto; Short	
7	1	3801022	Screw				
9	1	F1073358	Support				
10	1	N1263200	Bearing				
11	1	YN0114900	Seeger				
12	1	YN4358110	Washer				
13	1	N1470500	Nut				
14	1	YN4387700	Washer				
15	1	N2605600	Nipple				
16	1	YN1271100	Bearing				
17	1	F1073106	Shaft				
18	1	N1270400	Bearing				
19	1	YN0136800	Seeger				
20	1	F1073145	Spacer				
21	1	F1073105	Floating head				
22	1	N1258301	Bearing				
23	1	N0205720	Ring		sn 43582		
23	1	N0207500	Ring	sn 43583			
24	1	N4419550	Washer		sn 43582		
24	1	N4429200	Washer	sn 43583			
25	1	N0130000	Seeger				
26	1	F1073206	Clip		sn 43582		
26	1	F1073513	Clip	sn 43583			
27	1	N2605600	Nipple				
31	1	F1073372	Washer				
32	1	N6320500	Screw				
33	1	N2101600	Ring nut				
34	1	N5002850	Spacer				
35	1	N1261350	Bearing				
36	1	F1073190	Spacer				
37	1	F1073191	Pin				
38	1	F1073375	Connecting rod				
43	1	N5005400	Spacer				
44	1	L0038100	Spacer				
45	1	F1073260	Pin				
46	1	N1474500	Nut				
47	1	F1294701	Plate				
48	1	3914008	Nut				
49	1	F1294700	Lever				
50	1	N0317600	O-ring				
51	1	P0001289	Support kit				
52	1	K7035045	O-ring				

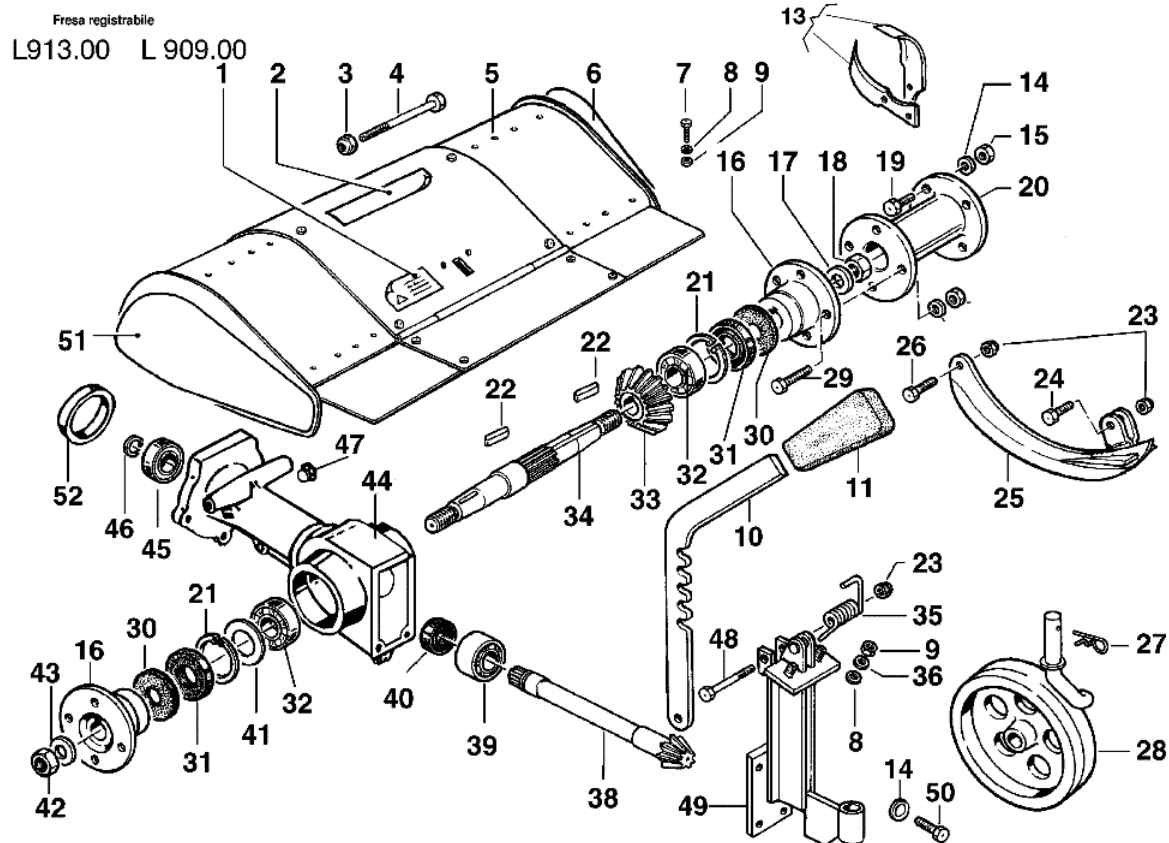


barra speciale attacco registrabile

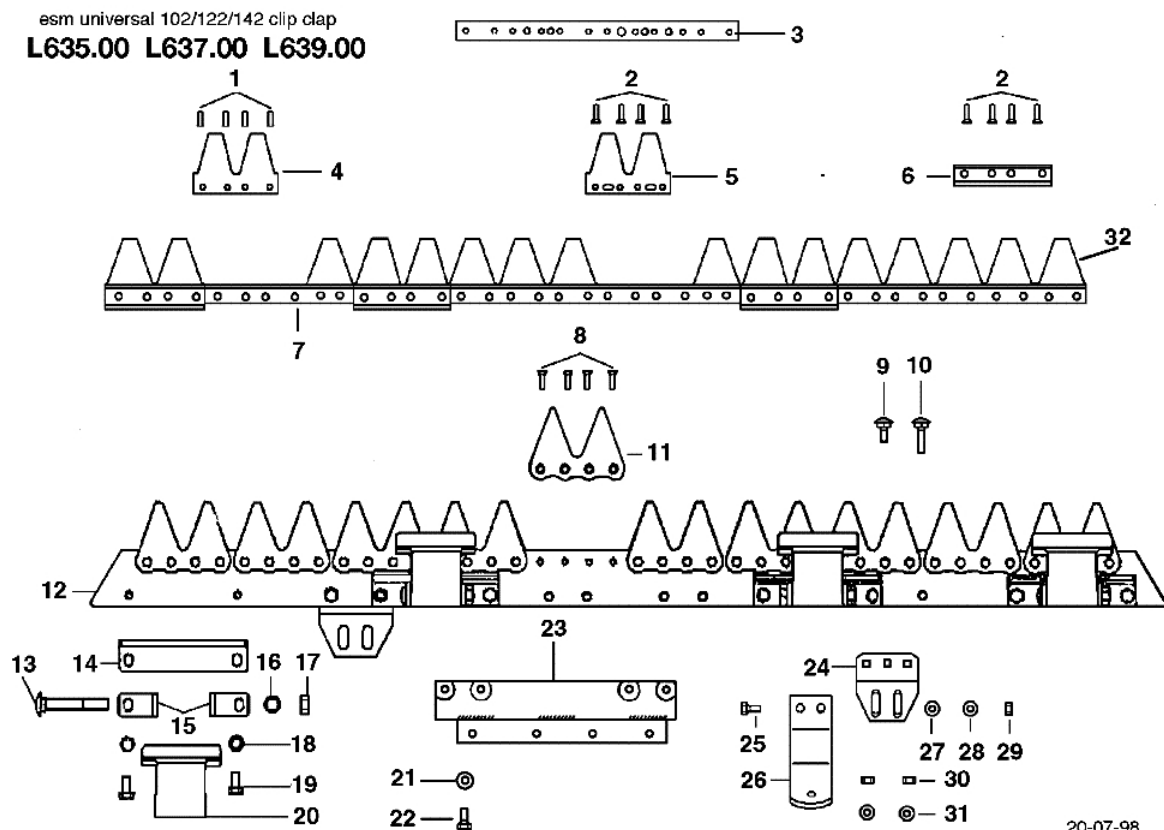
Ref.	O. ty	Item number	Description	Validity from	Validity till	Notes	Bulletin
1	1	F1303153	Sliding block	10/2000			
2	1	YN6332800	Screw				
5	1	N6245800	Screw				
7	1	F0582687	Plate				
12	1	F1303153	Sliding block	10/2000			
15	1	F1113112	Pressblade (Long)				
16	1	N6321250	Screw	10/2000			
17	1	F1303116	Plate			950	
17	1	F1303117	Plate			1150	
17	1	F1303118	Plate			1270	
17	1	F1303119	Plate			1400	
18	1	F0591593	Slide			1270	
18	1	F0712027	Slide			950	
18	1	F0712031	Slide			1150	
18	1	F1073220	Slide			1400	
22	1	N6322000	Screw				
23	1	N0886600	Rivet				
24	1	F0582688	Tooth (Double)			Dente SF; tooth SF	
24	1	F1113114	Tooth (Double)				
25	1	F1113113	Tooth				
26	1	F1073216	Blade				
28	1	F1073276	Blade			1150SP	
28	1	F1073277	Blade			1270SP	
28	1	F1073349	Blade			950SP	
28	1	F1073388	Blade			1400SP	
29	1	YN6262200	Screw				
30	1	YN4366700	Grower				
31	1	F1073364	Valve				
32	1	N6433900	Screw				
33	1	F1073261	Rivet				
34	1	F1073363	Clutch driver			Per barra SP; For SP bar	
34	1	Y1073376	Clutch driver			Per barra SF e ESM; For ESM and SF bar	
35	1	YN4366700	Grower				
36	1	3806063	Screw				
37	1	F1073273	Blade				



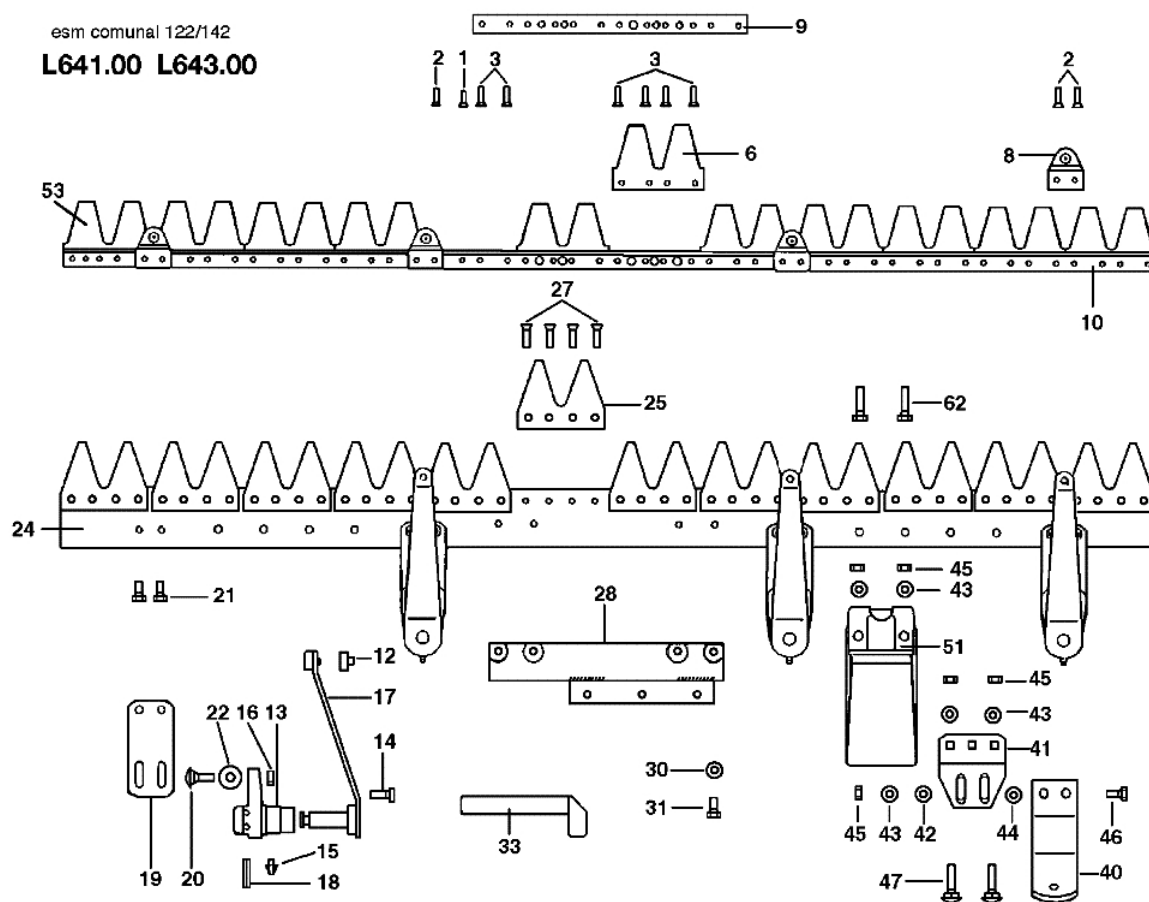
Ref.	O.ty	Item number	Description	Validity from	Validity till	Notes	Bulletin
1	1	N1468900	Nut				
2	1	N3121900	Spring				
3	1	F0712015	Swath board DX				
4	1	YN4384410	Washer				
5	1	N6399710	Screw				
6	1	YP0001784	Bonnets				
7	1	N6399710	Screw				
8	1	N4924000	Silent block				
9	1	YN4384410	Washer				
10	1	F1303126	Support				
11	1	YN4384410	Washer				
12	1	YN1470200	Nut				
14	1	YN4366700	Grower				
15	1	L0105500	Set (Counterweight)				
16	1	F0582687	Plate				
17	1	YN6332800	Screw				
18	1	F1303153	Sliding block	10/2000			
19	1	F0741634	Swath board SX				
20	1	YN6404000	Screw				
21	1	F0741609	Shoe DX				
22	1	3806094	Screw				
23	1	N6314900	Screw				
25	1	YN6332800	Screw				
26	1	F1073261	Rivet				
26	1	F1073399	Rivet			ESM	
27	1	YN1463650	Nut				
28	1	YN6332800	Screw				
30	1	N6321250	Screw	10/2000			
32	1	F0582686	Pressblade (Short)				
33	1	F0582738	Tooth (Single)				
35	1	N0886600	Rivet				
36	1	YF0582091	Blade				
37	1	F1073383	Blade			950SF	
37	1	F1073384	Blade			1150SF	
37	1	F1073385	Blade			1270SF	
37	1	F1073386	Blade			1450SF	
38	1	F1303153	Sliding block	10/2000			
41	1	N6322000	Screw				
42	1	F1303116	Plate			950	
42	1	F1303117	Plate			1150	
42	1	F1303118	Plate			1270	
42	1	F1303119	Plate			1450	
43	1	YN4366700	Grower				
44	1	3806063	Screw				
45	1	YN6262200	Screw				
46	1	YN4366700	Grower				
47	1	N6433900	Screw				
48	1	F1073364	Valve				
49	1	F1073363	Clutch driver			Per barra SP; For SP bar	
49	1	Y1073376	Clutch driver			Per barra SF; For SF bar	
50	1	F0582688	Tooth (Double)				
51	1	F0591593	Slide			1270	
51	1	F0712027	Slide			950	
51	1	F0712031	Slide			1150	
51	1	F1073220	Slide			1450	
52	1	F0741635	Shoe SX				
53	1	F1073377	Blade			DX; RIGHT	
53	1	F1073378	Blade			SX; LEFT	
54	1	3806063	Screw				
55	1	N5265900	Cap				
56	1	F0582685	Pressblade (Long)				
57	1	YN4387700	Washer				
58	1	YN6332800	Screw				
60	1	F1302127	Mark b	04/2004			
61	1	F1302131	Mark	04/2004		DX; RIGHT	
61	1	F1302132	Mark	04/2004		SX; LEFT	
62	1	N5381650	Mark (danger)				



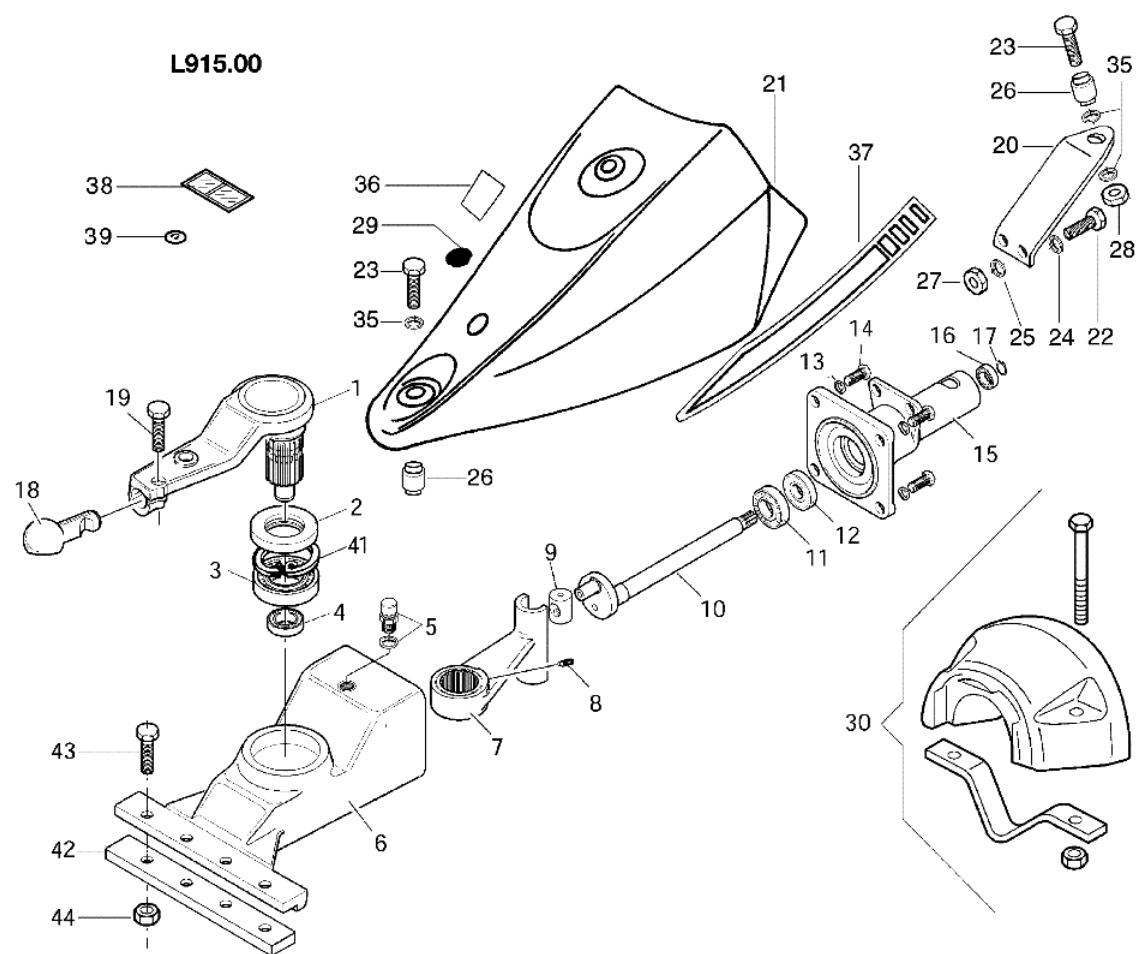
Ref.	O.ty	Item number	Description	Validity from	Validity till	Notes	Bulletin
1	1	F0015577	Mark (danger)				
2	1	F1152191	Mark	04/2004			
3	1	YN1476760	Nut				
4	1	N6433770	Screw				
5	1	F0015599	Hood			cm. 70	
5	1	F0015611	Hood			cm. 65	
6	1	F0017238	Mark	04/2004		DX; RIGHT;	
7	1	YN6248800	Screw				
8	1	YN4368500	Washer				
9	1	320000028	Nut				
10	1	F0015591	Tube				
11	1	N2840490	Knob				
13	1	R0000136	Cutters kit			cm. 65; DX + SX; RIGHT and LEFT;	
13	1	R0000138	Cutters kit			cm. 70; DX + SX; RIGHT and LEFT;	
14	1	N4366600	Grower				
15	1	N1457300	Nut				
16	1	F0015510	Support			cm. 70	
16	1	F0015547	Support			cm. 65	
17	1	N4418000	Washer				
18	1	N1482500	Nut				
19	1	N6262100	Screw			cm. 70	
19	1	YN6269100	Screw			cm. 65	
20	1	F0015515	Spacer			cm. 65	
20	1	F0015558C	Spacer			cm. 70	
21	1	YN0136800	Seeger				
22	1	YN0652200	Key				
23	1	YN1458020	Nut				
24	1	3806065	Screw				
25	1	F0015592	Cutter tool				
26	1	YN6267000	Screw				
27	1	N5149700	Split pin				
28	1	Z0020368	Wheel				
29	1	N6274000	Screw				
30	1	F0013525	Felt				
31	1	YN0210050	Gasket				
32	1	YN1270700	Bearing				
33	1	F0015582	Rim				
34	1	F0013531	Shaft				
35	1	F0015587	Spring				
36	1	YN4366700	Grower				
38	1	F0015581	Sprocket				
39	1	N1264051	Bearing				
40	1	N0207400	Ring				
41	1	N5006800	Washer				
42	1	N1482600	Nut				
43	1	N4418000	Washer				
44	1	F0015608	Tiller				
45	1	YN1263201	Bearing				
46	1	YN0114900	Seeger				
47	1	YN5254000	Oil cap				
48	1	N6294400	Screw				
49	1	F0015607	Cover				
50	1	N6255400	Screw				
51	1	F0017239	Mark	04/2004		SX; LEFT	
52	1	F0013529	Bushing				



Ref.	O. ty	Item number	Description	Validity from	Validity till	Notes	Bulletin
1	1	R1504705	Rivet				
2	1	F1073455	Rivet				
3	1	F1073501	Plate				
4	1	F1073451	Shear blade (Double)				
5	1	F1073452	Shear blade (Double)				
6	1	F1073453	Slide				
7	1	F1073502	Back (Blade) cm.102				
7	1	F1073503	Back (Blade) cm.122				
7	1	F1073504	Back (Blade) cm.142				
8	1	N0892500	Rivet				
11	1	F1073456	Tooth (Double)				
12	1	F1073505	Back (Bar) cm.102				
12	1	F1073506	Back (Bar) cm.122				
12	1	F1073507	Back (Bar) cm.142				
13	1	F1073462	Screw				
14	1	F1073458	Plate				
15	1	F1073459	Frame				
17	1	N1464800	Nut				
19	1	3806063	Screw				
20	1	F1073457	Pusher				
21	1	YN4367200	Washer				
22	1	YN6254600	Screw				
23	1	F1073401	Connection plate				
24	1	F1073430	Attachment (Sole)				
25	1	YN6267000	Screw				
26	1	F1073428	Sole				
27	1	YN4369110	Washer				
28	1	YN4367200	Washer				
29	1	R1504723	Nut				
32	1	F1073467	Shear blade cm.102				
32	1	F1073468	Shear blade cm.122				
32	1	F1073469	Shear blade cm.142				

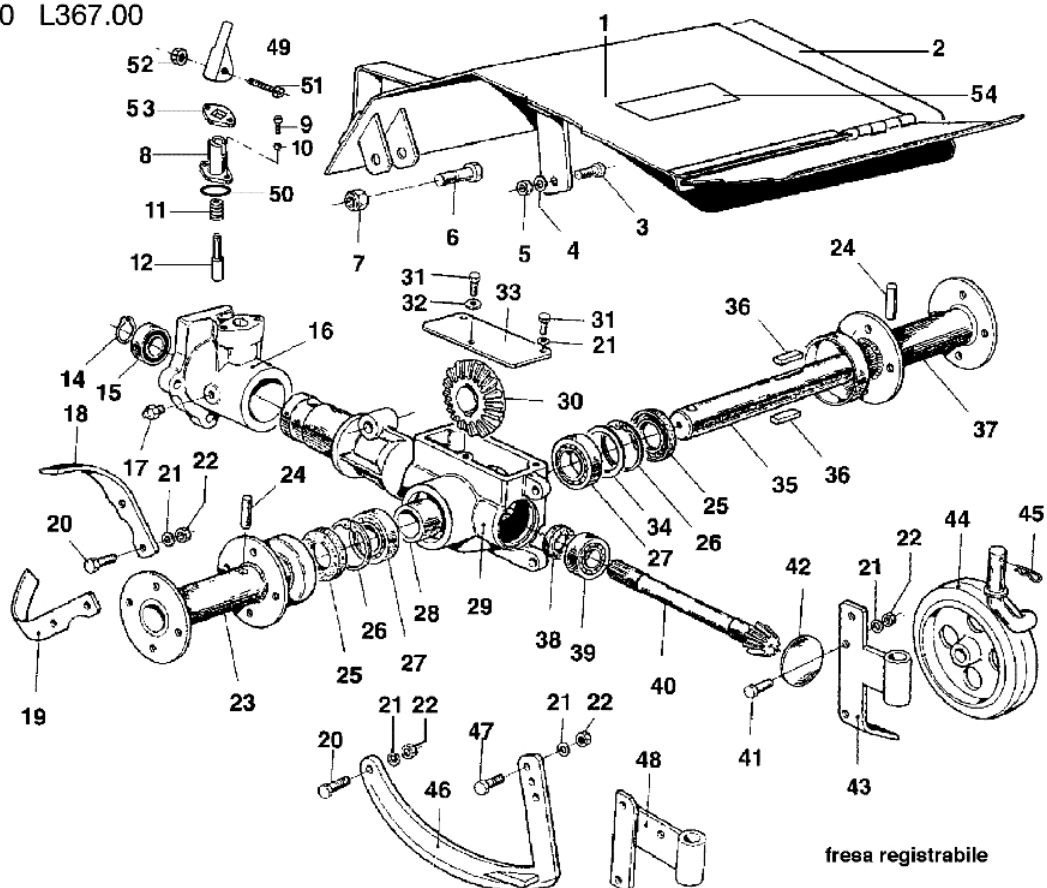


Ref.	O.ty	Item number	Description	Validity from	Validity till	Notes	Bulletin
1	1	R1504705	Rivet				
2	1	R1504706	Rivet				
3	1	F1073441	Rivet				
6	1	R1504709	Shear blade (Double)				
8	1	R1504764	Support				
9	1	F1073438	Plate				
10	1	F1073435	Back (Blade) cm142				
10	1	F1073434	Back (Blade) cm122				
12	1	R1504773	Bushing				
13	1	R1504768	Support				
14	1	R1504769	Screw				
15	1	R1504770	Nipple				
16	1	R1504723	Nut				
17	1	R1504772	Swing arm				
18	1	R1504771	Pin				
19	1	F1073436	Plate				
20	1	F1073442	Screw				
21	1	N6249300	Screw				
22	1	R1504776	Washer				
24	1	F1073418	Back (Bar) cm.142				
24	1	F1073417	Back (Bar) cm.122				
25	1	F1073422	Tooth (Double)				
27	1	N0892500	Rivet				
28	1	F1073401	Connection plate				
30	1	YN4367200	Washer				
31	1	YN6254600	Screw				
33	1	F1073415	Lever (Fitting)				
40	1	F1073428	Sole				
41	1	F1073430	Attachment (Sole)				
42	1	YN4369110	Washer				
43	1	YN4367200	Washer				
44	1	F1073443	Washer				
45	1	R1504723	Nut				
46	1	YN6267000	Screw				
47	1	R1504720	Screw				
51	1	F1073432	Slide shoe				
53	1	F1073409	Shear blade cm.122				
53	1	F1073410	Shear blade cm.142				
62	1	YN6272400	Screw				



Ref.	O. ty	Item number	Description	Validity from	Validity till	Notes	Bulletin
1	1	F1303156	Connecting rod				
2	1	YN0222805	Ring				
3	1	N1289200	Bearing				
4	1	YN1263700	Bearing				
5	1	K4101420	Cap				
6	1	F1303100	Half case				
7	1	F1303102	Connecting rod				
8	1	N6251000	Screw				
9	1	F1303106	Switch				
10	1	F1303108	Shaft				
11	1	N1272501	Bearing				
12	1	N0210045	Ring				
13	1	3819014	Grower				
14	1	3806094	Screw				
15	1	F1303101	Cover				
16	1	N1263200	Bearing				
17	1	YN0114900	Seeger				
18	1	F1303155	Pin				
19	1	3806094	Screw				
20	1	F1303125	Support				
21	1	YP0001784	Bonnets				
22	1	YN6267000	Screw				
23	1	N6399710	Screw				
24	1	YN4366700	Grower				
25	1	3916008R	Washer				
26	1	N4924000	Silent block				
27	1	320000028	Nut				
28	1	YN1470200	Nut				
29	1	N5265900	Cap				
30	1	L0105700	Set (Counterweight)				
35	1	YN4384410	Washer				
36	1	F1303127	Mark	04/2004			
37	1	F1302131	Mark	04/2004		DX; RIGHT	
37	1	F1302132	Mark	04/2004		SX; LEFT	
38	1	N5381650	Mark (danger)				
39	1	N5383405	Mark (Protection)		03/2004		
41	1	N0140800	Seeger				
42	1	L0081100	Washer				
43	1	YN6332800	Screw				
44	1	YN1463650	Nut				

L365.00 L367.00



Ref.	O.ty	Item number	Description	Validity from	Validity till	Notes	Bulletin
1	1	F0017001	Hood			Cofano fisso 50 cm.; Fixed hood 50 cm.	
1	1	F0017012	Deck assembly			Cofano registrabile 60 cm.; Registrable hood 60 cm	
2	1	F0017020	Mark			DX; RIGHT	
2	1	F0017021	Mark			SX; LEFT	
3	1	YN6267000	Screw				
4	1	YN4366700	Grower				
5	1	320000028	Nut				
6	1	N6395100	Screw				
7	1	YN1470150	Nut				
8	1	F1154702	Slide				
9	1	3801022	Screw				
10	1	YN4358110	Washer				
11	1	N3118700	Spring				
12	1	F1054710	Shutter				
13	1	N5129450	Pin				
14	1	YN0114900	Seeger				
15	1	N1263200	Bearing				
16	1	L0100700	quickfit				
17	1	N2605600	Nipple				
19	1	R0000139	Cutters kit			60 cm	
20	1	N6272300	Screw				
21	1	N4366600	Grower				
22	1	N1457300	Nut				
23	1	F0017005	Spacer				
23	1	L0036100	Spacer			A richiesta per L350; On request for L350	
24	1	F0017022	Pin		12/1995	ø 10	
24	1	F0017024	Pin	01/1996		ø 10.25	
25	1	N0212450	Ring				
26	1	N0138000	Seeger				
27	1	N1274500	Bearing				
28	1	F0017018	Spacer				
29	1	F0017000	Tiller				
30	1	F0017017	Rim				
31	1	N6249300	Screw				
32	1	YN4364700	Washer				
33	1	F0017009	Cover				
34	1	N5009320	Washer			0.2 mm	
34	1	N5009330	Washer			0.3 mm	
35	1	F0017016	Shaft				
36	1	N0651610	Key			Linguetta con estremità arrotondate; Tab with roun	
36	1	N0651700	Key				
37	1	F0017005	Spacer				
37	1	L0036100	Spacer			A richiesta per L350; On request for L350	
38	1	N0207300	Ring				
39	1	YN1263701	Bearing				
40	1	F0017008	Sprocket				
41	1	3806067	Screw				
42	1	N5276700	Cap				
43	1	F0017006	Cutter tool			Cofano fisso 50 cm.; Fixed hood 50 cm.	
44	1	Z0020368	Wheel			A richiesta; On request	
45	1	N5108600	Cotter pin			A richiesta; On request	
46	1	F0015548	Cutter tool			Cofano registrabile 60 cm.; Registrable hood 60 cm	
47	1	3806074R	Screw			Cofano registrabile 60 cm.; Registrable hood 60 cm	
48	1	F0017019	Support			Cofano registrabile 60 cm.; Registrable hood 60 cm	
49	1	F1294700	Lever				
50	1	N0317600	O-ring				
51	1	3801027	Screw				
52	1	3914008	Nut				
53	1	F1294701	Plate				
54	1	F0015577	Mark (danger)				