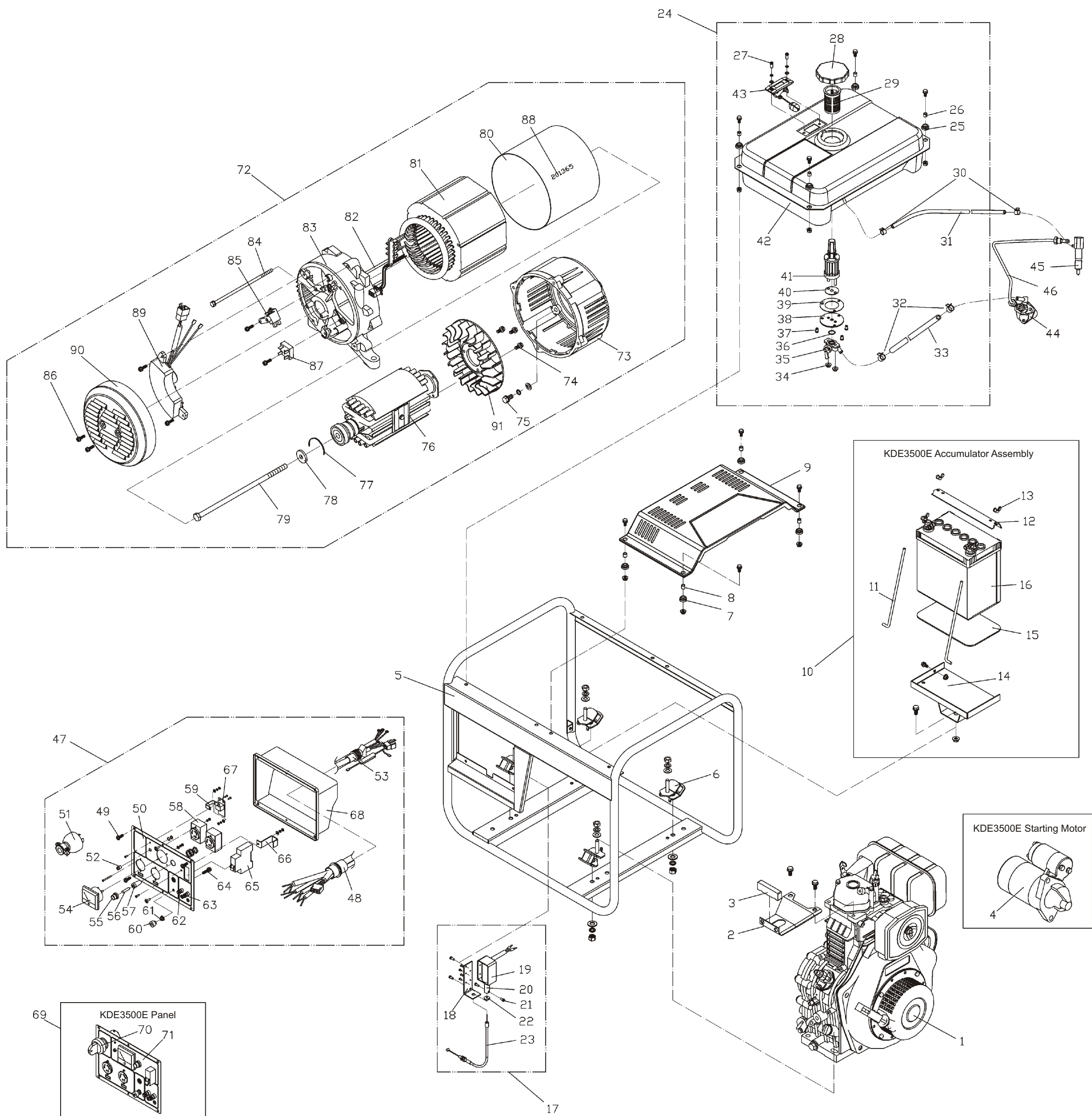


ASSEMBLY AND PARTS ALBUM

KDE3500X/E



No.	Code.	Description	Qty.	No.	Code.	Description	Qty.	No.	Code.	Description	Qty.	No.	Code.	Description	Qty.
1	KM178FG	Air-cooled Diesel	1	24	KDE3500X-30000a	Fuel Tank Assembly	1	47	KDE3500X-50000a	Instrument Assembly	1	70	JK425	Electric Starter Assembly	1
2	KDE5000X-00007	Engine Assistant Support Frame	1	25	KDE5000X-30004	Cushion	4	48	KDE5000X-70003	Wiring Harness Fixed Sheath	1	71	KDE3500E-51001	Instrument Panel	1
3	KDE5000X-00002	Assistant Support Frame Cushion	1	26	KDE5000X-30005	Sheath	4	49	GB818-85	Screw M6X16	4	72	T38	3KW Electrical Machinery	1
4	KM186F-15100	Starting Motor	1	27	GB/T819.1-2000	Screw M5X12	2	50	KDE3500X-51001	Instrument Panel	1	73	8KM.3041.01	Electrical Machinery Forepart Cover	1
5	KDE3500X-40000a	Housing Weldment Assembly	1	28	KM186F-10002	Fuel Tank Cap Joint Assembly	1	51	250V/26A	Single-phase Pin	1	74	GB6563-86	Self-threading Locking Screw ST5	3
6	KDE3500C-01000	1#Cushion Joint Assembly	4	29	KM186F-10003	Fuel Filler Screen	1	52	CLAD	Oil alert Indicator Light	1	75	GB5781-86	Bolt M8x20	4
7	KDE5000X-30003	Cushion	4	30	KM186F-10013	Fuel Return Pipe Clip	2	53	KDE5000X-70009	Circuitry Fixed Sheath	1	76	5KM.6741.01	Generator Rotator	1
8	KDE5000X-30004	Sheath	4	31	KDE5000X-30002	Fuel Return Pipe	1	54	MU45 0-300V	Voltmeter KD-45	1	77	6204DV	Clip	1
9	KDE3500X-60000a	Ornament Board Weldment Assembly	1	32	KM186F-30011	Fuel Filler Pipe Clip	2	55	BLX	Fuel Box	1	78	8KM.2182.01	Pull-through Shaft Bolt Washer	1
10	KDE5000E-80000	Accumulator Assembly	1	33	KDE5000X-30001	Fuel Filler Pipe	1	56	Φ6×30	Fuse	1	79	8KM.2002.01	3KW Pull-through Shaft Bolt M10	1
11	KDE3500E-00003a	Screw Bolt	2	34	GB6177-86	Nut M6	2	57	BLX	Fuse Plastics Bottom Case	1	80	8KM.0132.01	Electical Machinery Control Plate	1
12	KDE3500E-00005a	Accumulator Pressure Plate	1	35	KM186F-10400	Fuel Tank Switch Assembly	1	58	250V-26A	Single-phase Receptacle	2	81	5KM.6801.01	Electical Machinery Stator	1
13	GB62-88	Wing Nut M6	2	36	GB3452.1-92	O-Ring	1	59	KDE3500X-51005a	Fixed Plate	1	82	8KM.203.009	Bolt M5	2
14	KDE3500E-70000a	Accumulator Support Weldment Assembly	1	37	GB/T819.1-2000	Screw M5X8	3	60	KDE3500X-50004a	Grounding Screw Cap M6	1	83	8KM.0342.01	Electical Machinery Back-end Cover	1
15	KDE3500E-00002a	Accumulator Washer	1	38	KDE5000X-31006	Seal Plate	1	61	GB6177-86	Nut M6	1	84	GB5787-86	Bolt M6X120	4
16	28AH (20H)	Accumulator 12v	1	39	KDE5000X-31007	Seal Washer	1	62	910A	Anode Connection Pole Unit	1	85	D104	Carbon Brush	1
17	KDE3500X-40000a	Electromagnet Assembly	1	40	KM186F-10007	Seal Washer	1	63	910A	Cathode Connection Pole Unit	1	86	GB6563-86	Self-threading Locking Plug Screw M6X12	2
18	KDE3500X-44000a	Electromagnet Set Plate	1	41	KM186F-10300	Element Washer	1	64	JB4110-85	Bolt M6x20	1	87	RBPC35-10	Gratz rectifier	1
19	DCT-12-C	Electromagnet	1	42	KDE5000X-31000	Fuel Tank Weldment Assembly	1	65	DZ47-63/1 C16	Air Switch	1	88		Generator Serial Number Assembly	1
20	DCT-12-C	Iron-corn	1	43	KDE5000X-32000	Oil Mark Assembly	1	66	KDE3500X-51003a	Air Switch Fixed Plate	1	89	AVR	Excitation AVR	1
21	GB/T818-85	Screw M5X8	2	44	KM186F-12000	Fuel Pump	1	67	KDE3500X-51004a	Fuel Pressure Protect Breadboard	1	90	8KM.0131.01	Boot Wind Cover	1
22	KDE3500X-40006a	Electromagnet Washer	1	45	KM186F-13000	Nozzle Tip	1	68	KDE5000X-70002	Back-end Cover of Instrument Box	1	91	8KM.4351.01	Electical Machinery Fan	1
23	KDE3500X-81000a	Steel Wire Connection Assembly	1	46	KM186F-10500	High-Pressure Fuel Pipe	1	69	KDE3500E-50000a	Instrument Assembly	1				

WUXI KAMA POWER CO., LTD.

NO.5 Xing Ming Road East, Dongting Economic Technology Development Area, Wuxi, Jiangsu Province. China
TEL: 0510-8709888 FAX: 0510-8702435 PC:214101