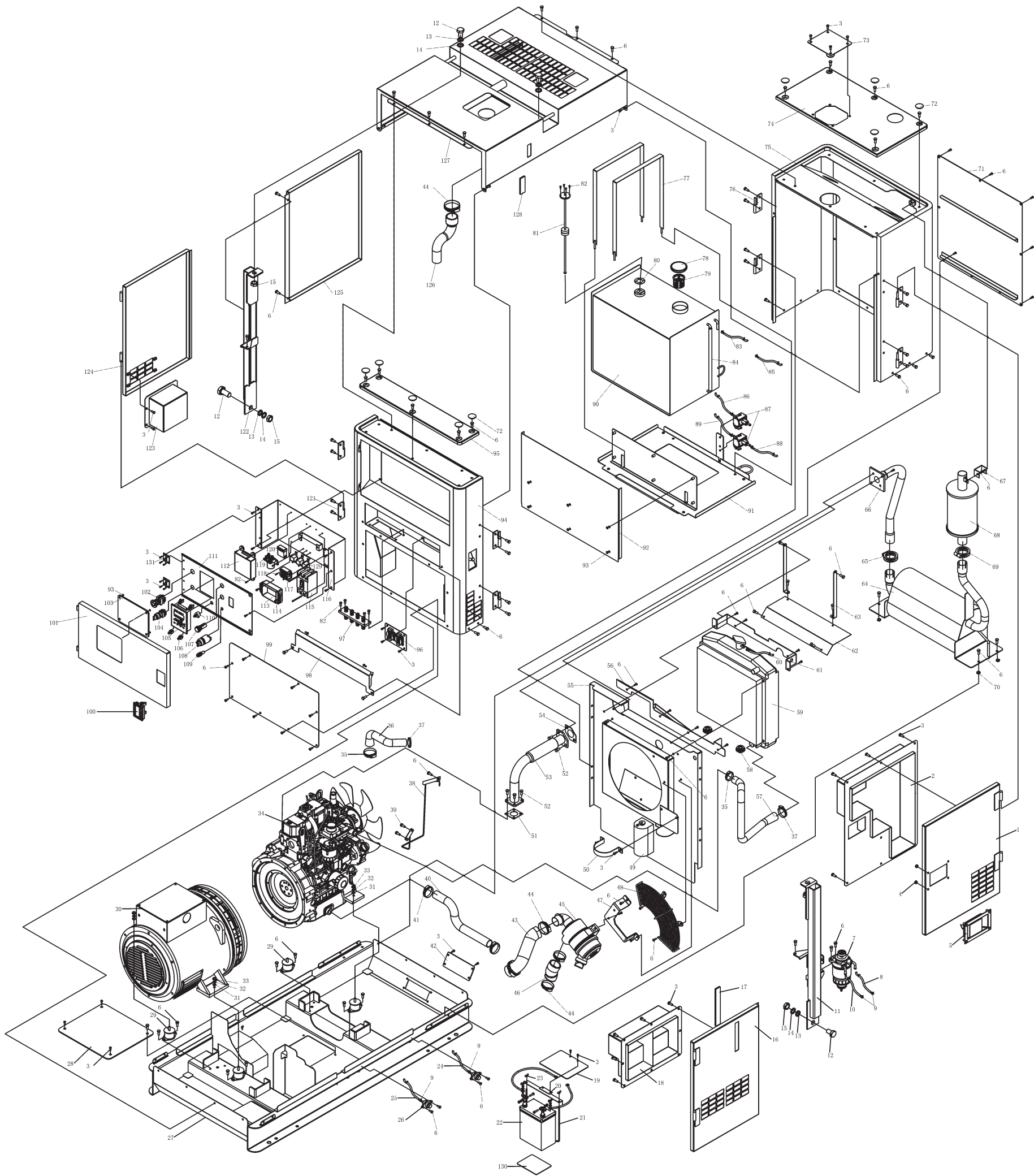


ASSEMBLY AND PARTS ALBUM

KDE11SS



No.	Part.No	Description	Qty.	No.	Part.No	Description	Qty.	No.	Part.No	Description	Qty.	No.	Part.No	Description	Qty.
1	KDE15SS-07300	Welding Part of Right Door (I)	1	36	KDE15SS-11002	Inlet Pipe of Water Tank	1	71	KDE15SS-06500	Rear Wall Cover Welding	1	106	KDE6700TA-13410	Display Location Assembly	4
2	KDE15SS-07310	Welding Part of Right Door (I) Air Duct	1	37	QC/T619-1999	Tube Ferrule 35-51	2	72	KDE35ST-04001	Waterproof Cover	10	107	XDJ2 AC220V(绿)	Electricity Power Indicating Light	1
3	GB/T5789-1986	Flange Face Bolt M6X12	53	38	KDE15SS-04740	Welding Part of Fixed Bracket	1	73	KDE15SS-06602	Water Tank Cover	1	108	JK427	Ignition Switch	1
4	GB/T61177.1-2000	Flange Face Nut M8	8	39	GB/T5789-1986	Flange Face Bolt M10X12	2	74	KDE15SS-06600	Welding Part of Rear Wall Top Cover	1	109	BX201C	Fuse Box	1
5	KDE35ST-07100-M	Door Lock Assembly	1	40	KD388-09008	Rubber Oil Outlet Pipe	1	75	KDE15SS-06000	Welding Assembly of Rear Wall	1	110	WX140-11 2.2K	Potentiometer	1
6	GB/T5789-1986	Flange Face Bolt M6X12	103	41	QC/T619-1999	Tube Ferrule 25-38	2	76	KDE15SS-07210	Welding Part of Hinge (III)	4	111	KDE15SS-13110	Welding Part of Panel	1
7	DX200M	Oil Water Separator Assembly	1	42	KDE15SS-03006	Chassis Cover (II)	1	77	KDE15SS-14010	Welding Part of Oil Tank Fixed Steel Plate	2	112	PLT-MB-ATS-C	Digital Control Module	1
8	KDE15SS-14016	Oil Inlet Pipe (I) for Oil Tank	1	43	KDE15SS-01002	Outlet Pipe of Air Filter (II)	1	78	KDE19T3-14200	Oil Tank Cover	1	113	PLY-DAVR-95S	Automatic Voltage Adjustor	1
9	KM168F-30011	Oil Tank Clip	18	44	QC/T619-1999	Tube Ferrule 51-70	5	79	KM168F-10004	Oil Filling Filter Gauze	1	114	GB/T5789-1986	Flange Face Bolt 5X20	7
10	KDE15SS-14017	Oil Inlet Pipe (II) for Oil Tank	1	45	KDE15SS-01200	Air Filter Assembly	1	80	KDE15SS-14001	Rubber Washer of Oil Gauge	1	115	BO-100EB 2P/45A	Breaker	1
11	KDE15SS-05200	Right Center Pillar Assembly	1	46	KDE15SS-01001	Outlet Pipe of Air Filter (I)	1	81	KDE15SS-14200	Oil Gauge	1	116	KDE15SS-04400	Welding Part of Electric Mounting Plate	1
12	GB/T5789-1986	Flange Face Bolt M16X40	4	47	KDE15SS-06402	Fixed Plate of Air Filter	1	82	GB/T5789-1986	Flange Face Bolt M6X20	8	117	PLY-CDQ-36AH	Charging Adjustor	1
13	GB/T97.1-2002	Flat Washer 16	4	48	KD388-17300	Fan Shield Part of Belt	1	83	KDE15SS-14012	Oil Return Pipe (II)	1	118	GB/T5789-1986	Flange Face Bolt M5X14	7
14	GB/T93-1987	Spring Washer 16	4	49	KDE19T3-10001	Antifreeze Fluid Can	1	84	KDE15SS-14106	Oil Scale Pipe	1	119	QDC-100 DC12	Preheat Relay	1
15	GB/T61177.1-2000	Flange Face Nut M16	4	50	KDE15SS-06472	Fixed Plate of Water-jug	1	85	KDE15SS-14013	Oil Return Pipe (I)	1	120	BX2041C	Four line Fuse Box	1
16	KDE15SS-07400	Welding Part of Right Door (II)	1	51	KD388-08003	Outlet Pipe Washer	1	86	KDE15SS-14018	Inlet Pipe of Oil Tank (II)	1	121	KDE15SS-07110	Welding Part of Hinge (I)	4
17	KDE15SS-07402	Organic Glass of Right Door (II) Perspective Window	1	52	GB/T5789-1986	Flange Face Bolt M8X25	6	87	KD388-10400	Electric Oil Supplying Pump I	2	122	KDE15SS-05100	Left Center Pillar Assembly	1
18	KDE15SS-07410	Welding Part of Right Door (II) Air Duct	1	53	KDE15SS-10010	Welding Part of Exhaust Pipe (I)	1	88	KDE15SS-14014	Oil Supplying Pipe of Oil Tank (I)	1	123	KDE15SS-07230	Welding Part of Left Door (II) Air Duct	1
19	KDE15SS-03014	Insulated Cover of Battery	1	54	KD388-08006	Washer	1	89	KDE15SS-14015	Oil Supplying Pipe of Oil Tank (II)	1	124	KDE15SS-07200	Welding Part of Left Door (II)	1
20	KDE15SS-03010	Welding Part of Battery Press Plate	1	55	KDE15SS-06400	Water Tank Baffle Plate Assembly Welding	1	90	KDE15SS-14000	Oil Tank Assembly	1	125	KDE15SS-07100	Welding Part of Left Door (I)	1
21	KDE15SS-03013	Pulling Plug of Press Plate	2	56	KDE15SS-06440	Welding Part of Back Side Plate	1	91	KDE15SS-04700	Welding Part of Oil Tank Plate Assembly	1	126	KDE15SS-01003	Inlet Pipe of Air Filter	1
22	65AH-12V	Battery	1	57	KDE15SS-11001	Outlet Pipe of Water Tank	1	92	KDE15SS-04706	Guard Board of Oil Tank	1	127	KDE15SS-08000	Welding Assembly of Top Cover	1
23	GB/T62-1988	Battery Nut M6	4	58	KDE15SS-12200	Damping Block of Water Tank	2	93	GB/T6177.1-2000	Nut M6	6	128	KDE15SS-08007	Organic Glass of Top Cover Perspective Window	1
24	KDE15SS-11004	Outlet Pipe of Water Tank	1	59	KD388-17400	Radiator Water Tank Assembly	1	94	KDE15SS-04000	Front Wall Assembly Welding	1	129	HFV4 12V 20A	Mirco Relay	3
25	KDE15SS-14011	Outlet Pipe of Oil Tank	1	60	KDE15SS-11003	Outlet Pipe of Water Tank	1	95	KDE15SS-04210	Welding Part of Front Wall Top Cover	1	130	KDE15SS-03015	Rubber Washer of Battery	1
26	KD388-17610	Welding Part of Water/Oil Outlet Seat	2	61	KDE15SS-06430	Welding Part of Water Tank Cover Fixed Bracket	1	96	TAFR230CE-13410	Receptacle Output Board	1	131	GB/T7277-1987	Hinge 2.5	2
27	KDE15SS-03000	Welding Assembly of Chassis	1	62	KDE15SS-06460	Welding Part of Water Tank Cover	1	97	KDE12STA3 13300	Output Board Assembly	1	132			
28	KDE15SS-03005	Chassis Cover (I)	1	63	KDE15SS-06462	Supporting Plate of Water Tank Cover	2	98	KDE15SS-04004	Connection Box Cover	1	133			
29	KDE15SS-12100	Damping Block	4	64	KDE15SS-10100	Welding Part of Muffler (I)	1	99	KDE15SS-04003	Front Wall Cover	1	134			
30	KF11	Generator Assembly	1	65	KDE15SS-10001	Templet of Double Circular Pipe(I)	1	100	KDE12E-08350	Door Lock	1	135			
31	GB/T97.1-2002	Flat Washer 10	4	66	KDE15SS-10020	Welding Part of Exhaust Pipe (II)	1	101	KDE15SS-04900	Welding Part of Control Panel	1	136			
32	GB/T93-1987	Spring Washer 10	4	67	KDE15SS-06102	Connection Plate	1	102	GE4T-10R-11	Emergency Stop Button	1	137			
33	GB/T61177.1-2000	Flange Face Nut M10	4	68	KDE15SS-10200	Welding Part of Muffler (II)	1	103	KDE15SS-04902	Organic Glass of Control Panel	1	138			
34	KD388	Engine Assembly	1	69	KDE15SS-10002	Templet of Double Circular Pipe (II)	1	104	M3SS3-10B	Optional Switch of Oil Injection Pump	1	139			
35	QC/T619-1999	Tube Ferrule 25-38	2	70	GB/T61177.1-2000	Flange Face Nut M8	4	105	PLY-MB-ATS-D	Digital Display	1	140			