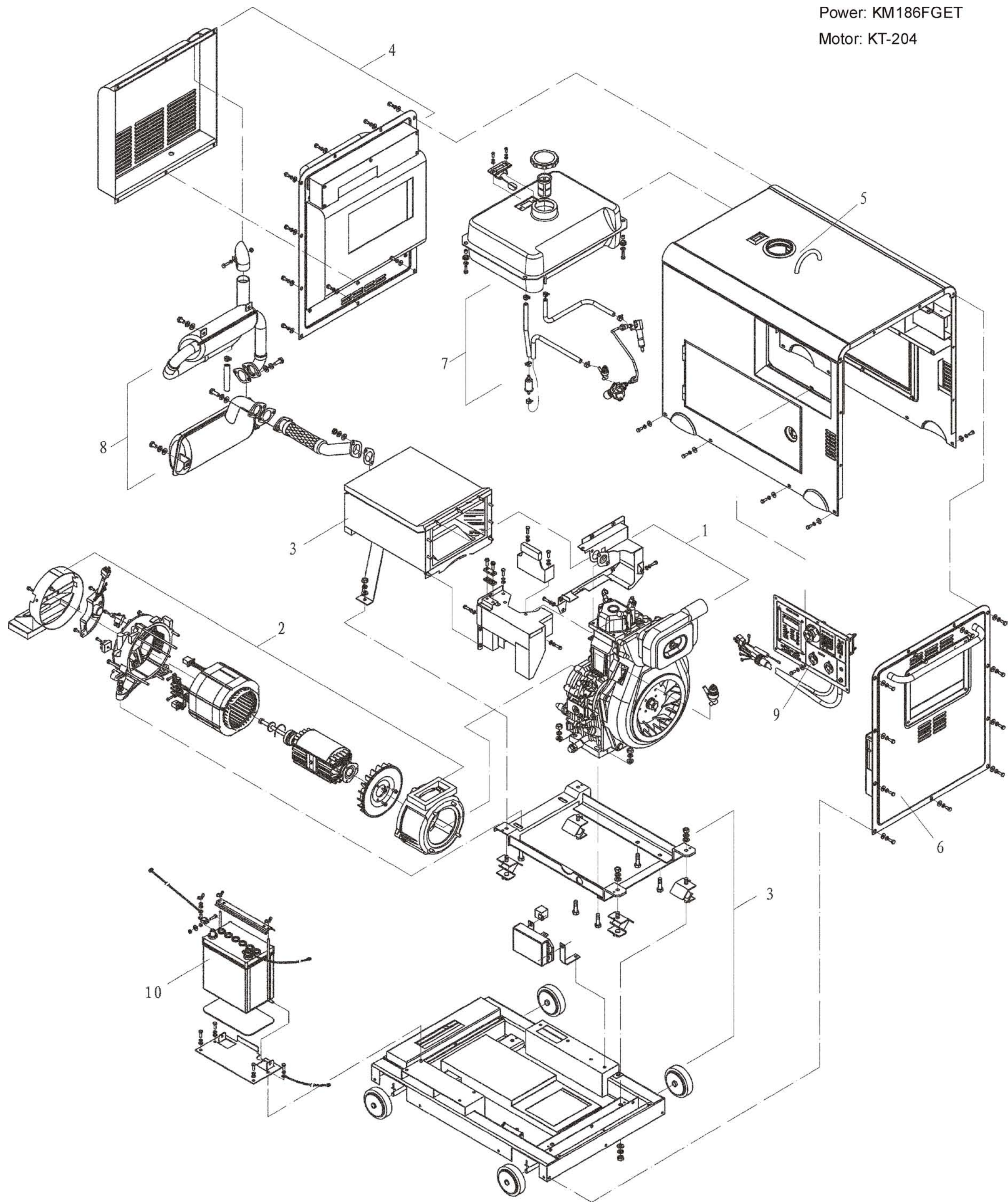


ASSEMBLY AND PARTS ALBUM

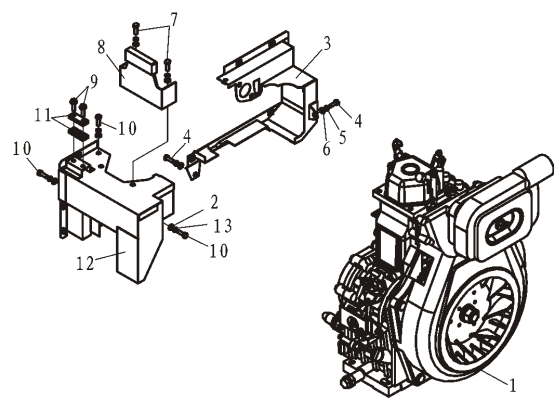
KDE6700TA3

Power: KM186FGET
Motor: KT-204



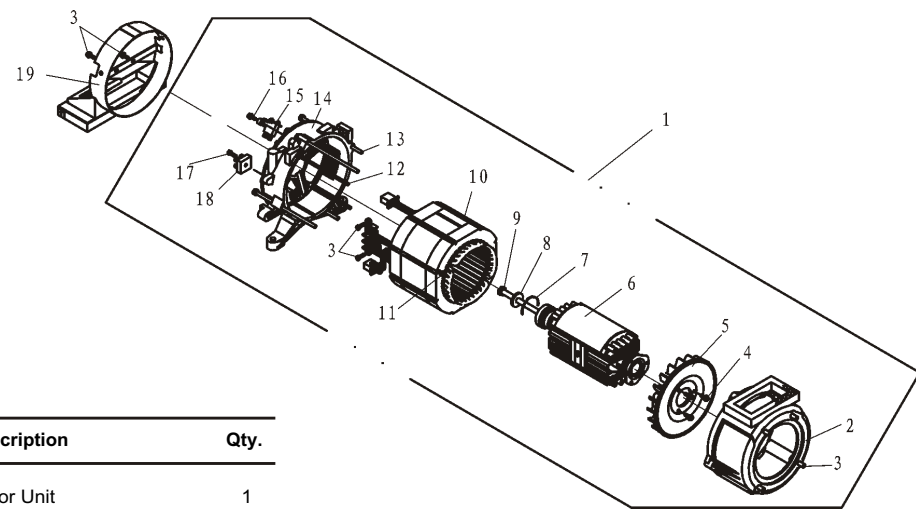
No.	Part. No.	Description
1	KDE5000T-01000	Diesel Engine Assembly
2	KDE6700T-02000	Motor Assembly
3	KDE6700T-03000	Chassis
4	KDE6700T-05000	Left Side Plate
5	KDE6700T-08000	Casing Unit

No.	Part. No.	Description
6	KDE6700T-06000	Right Side Plate
7	KDE6700T-07000	Fuel System
8	KDE6700T-08000	Muffler Assembly
9	KDE6700TA3-13100	Control Panel
10	KDE6700T-09200	Battery



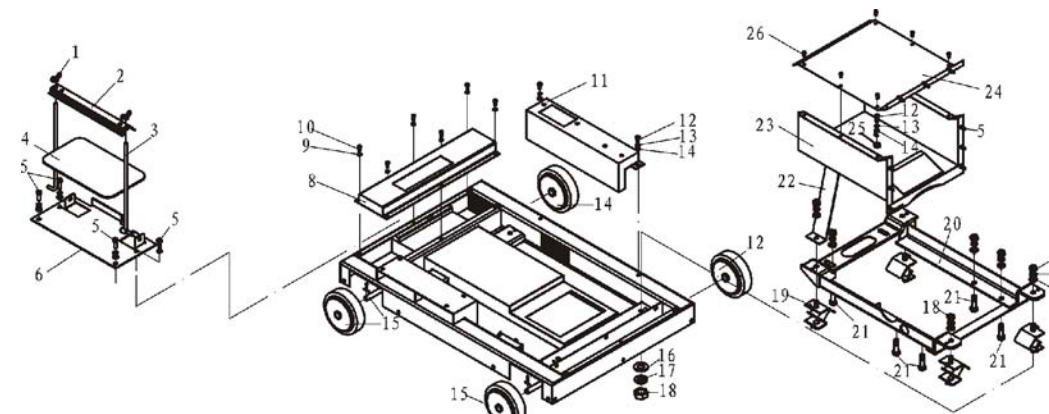
(1) Diesel Engine Assembly

No.	Part.No	Description	Qty.	No.	Part.No	Description	Qty.
1	KM186FAGD-00000	Air-cooled Diesel Engine	1	8	KDE5000T-01300	Buffer Bracket Unit	
2	GB/T97.1-2000	Gasket 6	2	9	GB/T5783-2000	Bolt M6×30	1
3	KDE5000T-01100	Front Air Guide Plate Weldment	1	10	GB/T5783-2000	Bolt M6×20	2
4	GB/T5783-2000	Bolt M8×16	2	11	KDE5000T-01500	Fuel Pipe Pressure Plate Unit	2
5	GB/T93-1987	Elastic Washer 8	2	12	KDE5000T-01200	Rear Air Guide Plate Weldment	1
6	GB/T97.1-2002	Flat Gasket 8	2	13	GB/T93-1987	Elastic Washer 6	1
7	GB/T5783-2000	Bolt M8×20	2				2



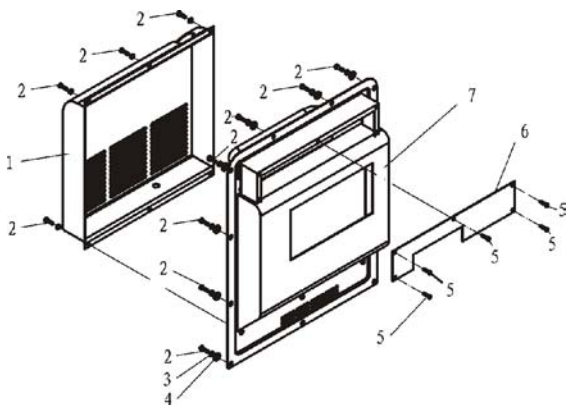
(2) Motor Assembly

No.	Part.No	Description	Qty.	No.	Part.No	Description	Qty.
1	KDE6700T-02200	Motor Unit	1	13	GB/T5783-2000	Bolt M6 (locking front cover)	4
2	8KM.0341.01	Front Cover of Motor	1	14	8KM.0342.01	Rear Cover of Motor	1
3	GB/T5783-2000	Bolt M8×30	4	15	D104	Carbon Brush	1
4	GB/5786-2000	Screw M5×12	7	16	GB/5786-2000	Screw M5×14	2
5	8KM.4351.01	Motor Fan	1	17	GB/5786-2000	Screw M5×16	3
6	5KM.6741.01	Motor Rotor	1	18	3510	Rectifier	1
7	6204DU	Clip	1	19	KDE6700T-02100	Air Guide Cover of Motor Weldment	1
8	8KM.214.009	Gasket	1				
9	8KM.202.009	Bolt (locking rotor)	1				
10	5KM.6801.01	Motor Stator	1				
11	GB/810-1988	Round Nut M5	2				
12	8KM.203.009	BoltM5 (locking stator)	2				



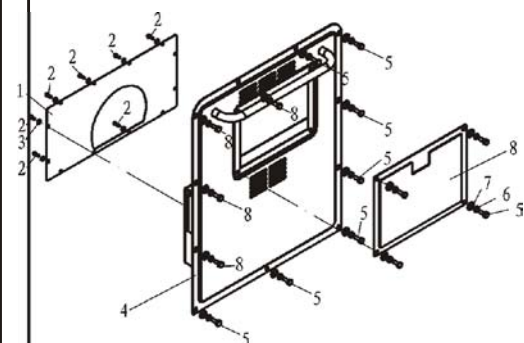
(3) Chassis Assembly

No.	Part.No	Description	Qty.	No.	Part.No	Description	Qty.
1	GB/62-1988	Nut.M6	2	14	GB/T97.1-2002	Flat Gasket 6	4
2	KDE5000T-03003	Pressure Plate of Battery	1	15	KDE5000T-03800	Castor	2
3	KDE5000T-03002	Fasten rod of Battery	2	16	GB/T97.1-2002	Flat Gasket 10	14
4	KDE5000T-03018	Base Plate of Battery	1	17	GB/T93-1987	Elastic Washers 10	14
5	GB/T5783-2000	Bolt M6×20	13	18	GB/T6170-2000	Nut M10	14
6	KDE5000T-03001	Support Plate of Battery	1	19	KDE5000T-03700	Damping Block	4
7	KDE6700T-03100	Chassis Weldment	1	20	KDE6700T-03400	Weldment of Frame Base seat	1
8	KDE6700T-03201	Tailstock Air Hole of Motor	1	21	GB/T5783-2000	Bolt M10×40	6
9	GB/T93-1987	Elastic Washer 5	6	22	KDE5000T-03900	Bracket of Heat Insulation Box Weldment	1
10	GB/T5783-2000	Bolt M5×12	6	23	KDE5000T-03600	Lower Body of Heat Insulation Box Weldment	1
11	KDE6700T-03300	AVR Radiating Plate Weldment	1	24	KDE5000T-03013	Cover Plate of Heat Insulation Box	1
12	GB/T5783-2000	Bolt M6×20	4	25	GB/T6170-2000	Nut M6	2
13	GB/T93-1987	Elastic Washer 6	4	26	GB/T818-2000	Screw M6×12	6



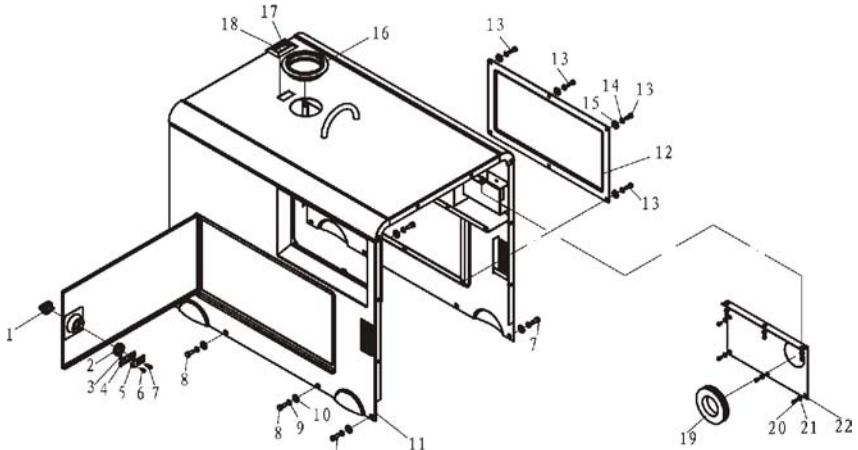
(4) Left Side Plate

No.	Part.No	Description	Qty.
1	KDE6700T-05109	Radiating Plate	1
2	GB/T5783-2000	Bolt.M6×16	17
3	GB/T93-1987	Elastic Washer 6	17
4	GB/T96-1985	Big Gasket 6	11
5	GB/T5783-2000	Bolt.M5×20	5
6	KDE5000T-05105	Air Inlet Cover Plate of Left Side Plate	1
7	KDE6700T-05100	Left Side Plate Weldment	1



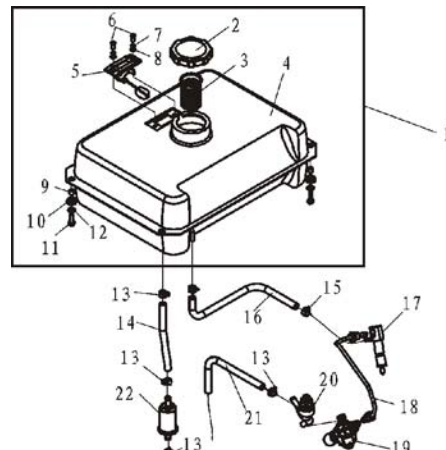
(6) Right Side Plate

No.	Part.No	Description	Qty.
1	KDE5000T-06300	Outside Cover Plate of Air Cleaner Weldment	1
2	GB/T818-2000	Screw.M5×12	10
3	GB/T93-1987	Elastic Washer 5	10
4	KDE6700T-06100	Right Side Plate Weldment	1
5	GB/T5783-2000	Bolt.M6×16	15
6	GB/T93-1987	Elastic Washer 6	15
7	GB/T5783-2000	Bolt.M6×20	15
8	KDE5000T-06200	Air Cleaner Cover Plate	1



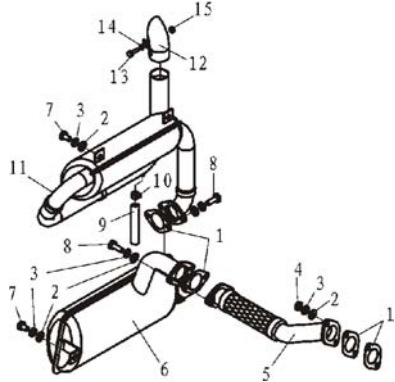
(5) Casing Unit

No.	Part.No	Description	Qty.	No.	Part.No	Description	Qty.
1	5GF-LDE-05018	Door Lock Knob	1	12	LGF-LDE-050150	Rear Plate Weldment	1
2	5GF-LDE-05019	Cushion	1	13	GB/T5783-2000	Bolt.M6×16	6
3	GB/T6170-2000	Nut M4	1	14	GB/T93-1987	Elastic Washer 6	6
4	5GF-LDE-05022	Door Lock	1	15	GB/T96.2-2002	Big Gasket 6	6
5	LGF-LDE-05021	Reinforced Plate of the Door Lock	1	16	LGF-LDE-05017	Damping Cushion of the Fuel Tank	1
6	GB/T818-2000	Screw.M5×10	1	17	LGF-LDE-05024	Buoy Window	1
7	GB/T818-2000	Screw.M5×15	1	18	LGF-LDE-05023	Window Mount Sheath	1
8	KDE6700T-08100	Bolt.M6×20	8	19	LGF-LDE-05025	Air Cleaner Damping Cushion	1
9	GB/T93-1987	Elastic Washer 6	8	20	GB/T818-2000	Screw.M5×12	7
10	GB/T96.2-2002	Big Gasket 6	8	21	GB/T93-1987	Elastic Washer 5	7
11	KDE6700T-08000	Casing Weldment	1	22	KDE5000T-08307	Filter Seal Plate	1



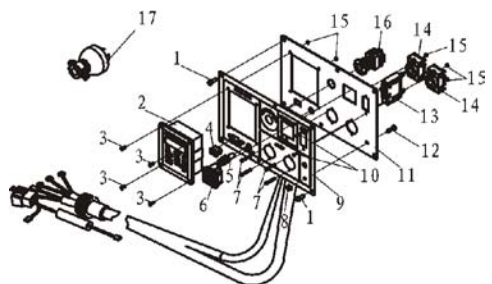
(7) Fuel System

No.	Part.No	Description	Qty.	No.	Part.No	Description	Qty.
1	KDE5000T-07500	Fuel Tank	1	12	GB/T97.1-2000	Flat Gasket 6	4
2	KDE5000T-07200	Fuel Tank Cover	1	13	KDE5000T-07004	Clip I	4
3	KDE5000T-07001	Filter Screen of Filling	1	14	KDE5000T-07005	Fuel Delivery Pipe I	1
4	KDE5000T-07100	Fuel Tank Weldment	1	15	KDE5000T-07006	Clip II	2
5	KDE5000T-07400	Oil Indicator	1	16	KDE5000T-07007	Oil Return Pipe	1
6	GB/T818-2000	Screw.M5×12	2	17	KM186FA-13000	Nozzle	1
7	GB/T93-1987	Elastic Washer 5	2	18	KM186FA-10501	High Pressure Fuel Pipe	1
8	GB/T97.1-2000	Flat Gasket 5	2	19	KM186F-12000	Fuel Pump Unit	1
9	KDE5000T-07002	Sheath	4	20	KM178FAGI-11200	Fuel Control Valve Unit	1
10	KDE5000T-07003	Damping Sheath	4	21	KDE5000T-07005	Fuel Delivery Pipe II	1
11	GB/T5783-2000	Bolt.M6×30	4	22	KGE12E-11010	Fuel Filter	1



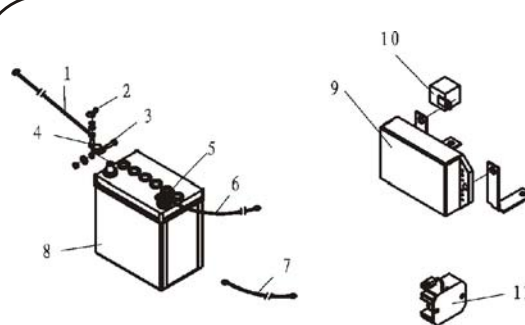
(8) Muffler Assembly

No.	Part.No	Description	Qty.	No.	Part.No	Description	Qty.
1	KM186F-02015	Exhaust Pipe Washer	4	9	KDE5000T-08003	Outlet Tube of Tail Air Particle	1
2	GB/T97.1-2000	Flat Gasket 8	9	10	KDE5000T-07004	Clip I	1
3	GB/T93-1987	Elastic Washer 8	9	11	KDE5000T-08300	Second-level Muffler Unit	1
4	GB/T6170-2000	Nut M8	2	12	KDE5000T-08410	Return Outlet of Tail Air Weldment	1
5	KDE5000T-08100	Exhaust Pipe Unit	1	13	GB/T5783-2000	Bolt.M6×30	1
6	KDE5000T-08200	First-Level Muffler Unit	1	14	GB/T97.1-2000	Flat Gasket 6	1
7	GB/T5783-2000	Bolt.M8×16	3	15	GB/T6170-2000	Nut M6	1
8	GB/T5783-2000	Bolt.M8×30	4				



(9) Control Panel

No.	Part.No	Description	Qty.
1	GB/T818-2000	Screw M6×12	6
2	KGTR-12V	Smart Display Screen	1
3	GB/T819.1-2000	Screw M4×12	4
4	RF-1004 10A 250V	Boat shaped Switch	1
5	BLXp6*30	AC Voltmeter	1
6	WZ-Z2/8.3A DC12V	DC Receptacle	1
7	GB/T818-2000	Screw M4×30	4
8	GB/T6177.1-2000	Nut.M6	1
9	KDE6700TA3-13121H	PVC Label	1
10	GB/T818-2000	Screw.M4×10	2
11	KDE6700TA3-131101H	Control Panel	1
12	GB/T5783-2000	Bolt M4×20	8
13	D50/1620 23A	Breaker	1
14	CHZ/26A 250V	Receptacle	2
15	GB/T6170-2000	Nut M4	8
16	LAY37-11ZS	Quick-Stop Button	1
17	CyZ/250V 26A	Plug	2



(10) Battery and Electric Parts

No.	Part.No	Description	Qty.
1	KDE5000T-09303	Battery Positive Wiring (Red)	1
2	GB/62-1988	Wing Nut M6	2
3	GB/T5783-2000	Bolt M6X25	2
4	KDE5000T-09502	Battery Positive Wiring Clip	1
5	KDE5000T-09501	Battery Negative Wiring Clip	1
6	KDE5000T-09302	Battery Ground Wire (Black)	1
7	KDE5000T-09301	Generator Ground Wire	1
8	12V 36Ah	Battery	1
9	Ply-DAVR-50s	Smart AVR	1
10	HFV4	Relay	1
11	36AH	Charging Adjustor	1