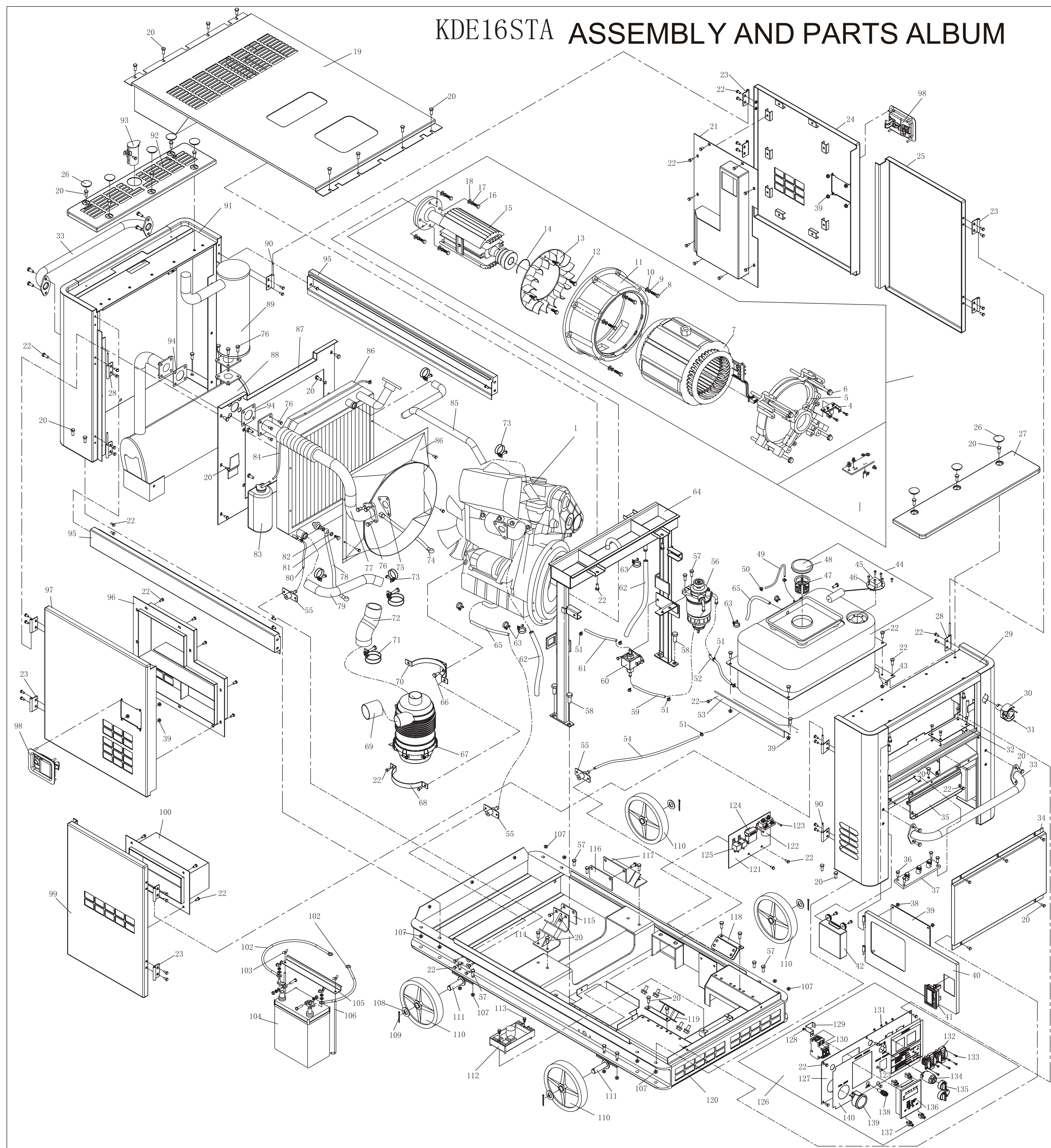


KDE16STA ASSEMBLY AND PARTS ALBUM



No.	Part.No	Description	Qty.	No.	Part.No	Description	Qty.	No.	Part.No	Description	Qty.	No.	Part.No	Description	Qty.	No.	Part.No	Description	Qty.	No.	Part.No	Description	Qty.
1	KM376AG-1000000	Engine assembly	1	25	KDE19ST-07600	Door board (3) assembly	1	49	KDE19ST-14002	Return oil pipe of tank	1	73	QC/T619-1999	Clip 38	4	97	KDE19ST-07400	Door board (1) assembly	1	121	KDE19ST-13601	Relay bottom board	1
2	KDE19T3-02000	Motor assembly	1	26	KDE35ST-04001	Waterproof cover	8	50	QC/T619-1999	Clip 9	2	74	KM376-100	Oil tube	1	98	KDE35ST-07100-M	Door lock assembly	2	122	QDC-100 DC12V	Preheat relay	1
3	KT245-03001	Carbon brush	2	27	KDE19ST-04200	Front column cover board welding	1	51	QC/T619-1999	Clip 13	8	75	KDE14T-11002	Exhaust air pipe Gasket	1	99	KDE19ST-07700	Door board (4) assembly	1	123	GB/T818-2000	Screw M4X15	5
4	KT245-03100	Carbon brush subassembly	1	28	KDE19ST-07010	Hinge (1)	4	52	KDE19ST-14001	Delivery oil pipe of oil tank	1	76	GB/T5789-1986	Bolt M8×30	11	100	KDE19ST-07200	Air road welding piece of door board (4)	1	124	BX2041C	Four line fuse box	1
5	KT245-00002	Back-end cover	1	29	KDE19ST-04100	Front column welding	1	53	KDE19ST-14011	Right supporting board of tank	1	77	KDE14T-11200	Flexible exhaust air pipe assembly	1	101	KDE19ST-13210 (Black)	Cathode wiring of battery	1	125	HFV4 12V 20A	Small type relay	2
6	GB/T5783-2000	Bolt M10×220	4	30	CE4T-10R-11	Urgent stop button	1	54	KDE19ST-14005	Drain oil pipe of tank	1	78	KM376-200	Oil tube	1	102	KDE19ST-13210 (Red)	Anode wiring of battery	1	126	KDE14STAR230CE-13100	Meter assembly	1
7	KT270-02000	Stator assembly	1	31	GB/T818-2000	Screw M3X12	2	55	KDE60ST-03020	Drain fuel pipe welding	3	79	KDE19ST-10004	Outlet water pipe of water tank	1	103	GB/T62-1988	Butterfly shaped nut M6	2	127	KDE14STAR230Q-13110	Instrument board	1
8	GB/T5782-2000	Bolt M8×35	8	32	KDE19ST-04004	Cover board	1	56	DX200M	Water oil separator assembly	1	80	KDE19ST-10003	Drain water pipe of water tank	2	104	65AH-12V	Battery	1	128	GB/T6177. 2-2000	Nut M4	1
9	GB/T93-1987	Spring washer 8	8	33	KDE19ST-04020	Handle welding	2	57	GB/T5789-1986	Bolt M8×20	10	81	KM376G-1013102	Bolt	1	105	KDE19T3-03002	Pressed board of battery	1	129	KDE14T-13103	Breaker bracket	1
10	GB/T97. 1-2002	Plain cushion 8	8	34	KDE19ST-04001	Front cover board	1	58	GB/T5789-1986	Bolt M12×20	4	82	JB982-1977	Gasket	7	106	KDE19T3-03003	Pressed board bolt	2	130	DZ47-63/1P C63	Breaker	1
11	KT270-00001	Front-end cover	1	35	KDE19ST-04002	Junction box cover board	1	59	KDE19ST-14003	Electric pump inlet tube	1	83	KDE19T3-10001	Antifreeze pot	1	107	GB/T6177. 1-2000	Nut M8	16	131	GB/T6170-2000	Nut M4	8
12	GB/T5783-2000	Bolt M8×25	4	36	GB/T5789-1986	Oil tank assembly	1	60	KDE388-10500	Electric fuel pump II	1	84	KDE19ST-10002	Overflow pipe of water tank	1	108	GB/T97. 1-2002	Plain washer 20	4	132	16A 250V	E-type receptacle	2
13	KT270-00003	Fan	1	37	KDE14T-13500	Output board	1	61	KDE19ST-14004	Electric pump outlet tube	1	85	KDE19ST-10001	Inlet water pipe of water tank	1	109	GB/T91-2000	Cotter pin 3	4	133	GB/T819. 1-2000	Instrument board	8
14	GB/T894-1986	Bearing retaining ring	1	38	GB/T6177. 1-2000	Nut M6	16	62	KDE19T3-05002	Drain water pipe	2	86	KDE19T3-10200	Radiator Assembly	1	110	KDE19T3-03310	Cartwheel	4	134	JK427-2	Lock body	1
15	KT270-01000	Rotor assembly	1	39	KDE19ST-04005	Organic glass	1	63	QC/T619-1999	Clip 20	6	87	KDE19ST-10200	Clapboard welding	1	111	KDE19ST-03200	Wheel and axle welding piece	2	135	JK427-1	Key	2
16	GB/T5782-2000	Bolt M10×45	4	40	KDE19ST-04300	Meter door welding	1	64	KDE19ST-05000	Center pillar assembly	1	88	KDE19ST-11100	Muffler assembly	1	112	AVR-15-1	Automatic voltage regulator	1	136	PLY-MB1-D	Intelligent display screen	1
17	GB/T93-1987	Spring washer 10	4	41	KDE12E-08350	Door lock	1	65	KDE19ST-01004	Oil Draining Pipe	2	89	KDE19ST-11200	Muffler welding piece	1	113	GB/T5789-1986	Bolt M5×40	2	137	KDE6700TA-13410	Monitor location assembly	4
18	GB/T97. 1-2002	Plain cushion 10	4	42	PLY-MB3-C	Intelligent control module	1	66	GB/T5789-1986	Bolt M10×12	2	90	KDE19ST-07020	Hinge (2)	4	114	KDE19T3-12200	Right damping cushion of engine	1	138	BX201C	Fuse seat	1
19	KDE19ST-08100	Top board cover welding	1	43	KDE19ST-14012	Left supporting board of oil tank	1	67	KM376AG-1109000	Air Cleaner Assembly	1	91	KDE19ST-06100	Back boarding welding	1	115	KDE19T3-12001	Suspension right backing board of diesel engine	1	139	8111-12V	Oil meter	1
20	GB/T5789-1986	Bolt M8×16	64	44	KDE19T3-14000	Oil tank assembly	1	68	KDE19ST-01001	Air filter fixed board	1	92	KDE19ST-06200	Cover board welding of back boarding	1	116	KDE19T3-12002	Suspension left backing board of diesel engine	1	140	KDE14STAR230CE-13110	PVC Label	1
21	KDE19ST-07100	Air line welding piece of door board (2)	1	45	GB/T818-2000	Screw M5×10	5	69	KDE19ST-01002	Vent pipe of air filter	1	93	KDE19T3-11300	Vent pipe cap	1	117	KDE19T3-12300	Left damping cushion of engine	1				
22	GB/T5789-1986	Bolt M6×12	104	46	KDE19T3-14017	Oil mass sensor	1	70	KDE19ST-01010	Air filter fixed board welding	1	94	KDE19T3-11001	Gasket of exhaust pipe (asbestos)	2	118	KDE19ST-12100	Damping cushion (1) of generator	1				
23	KDE19ST-07012	Fixing plate	8	47	KM168F-10004	Oiling filter screen	1	71	QC/T619-1999	Clip 51-70	2	95	KDE19ST-08001	Decorative board of top cover	2	119	KDE19ST-12200	Damping cushion (2) of generator	1				
24	KDE19ST-07500	Door board (2) assembly	1	48	KDE19T3-14200	Oil Tank cover	1	72	KDE19ST-01003	Engine inlet pipe	1	96	KDE19ST-07300	Air line welding piece of door board (1)	1	120	KDE19ST-03100	Chassis welding piece	1				