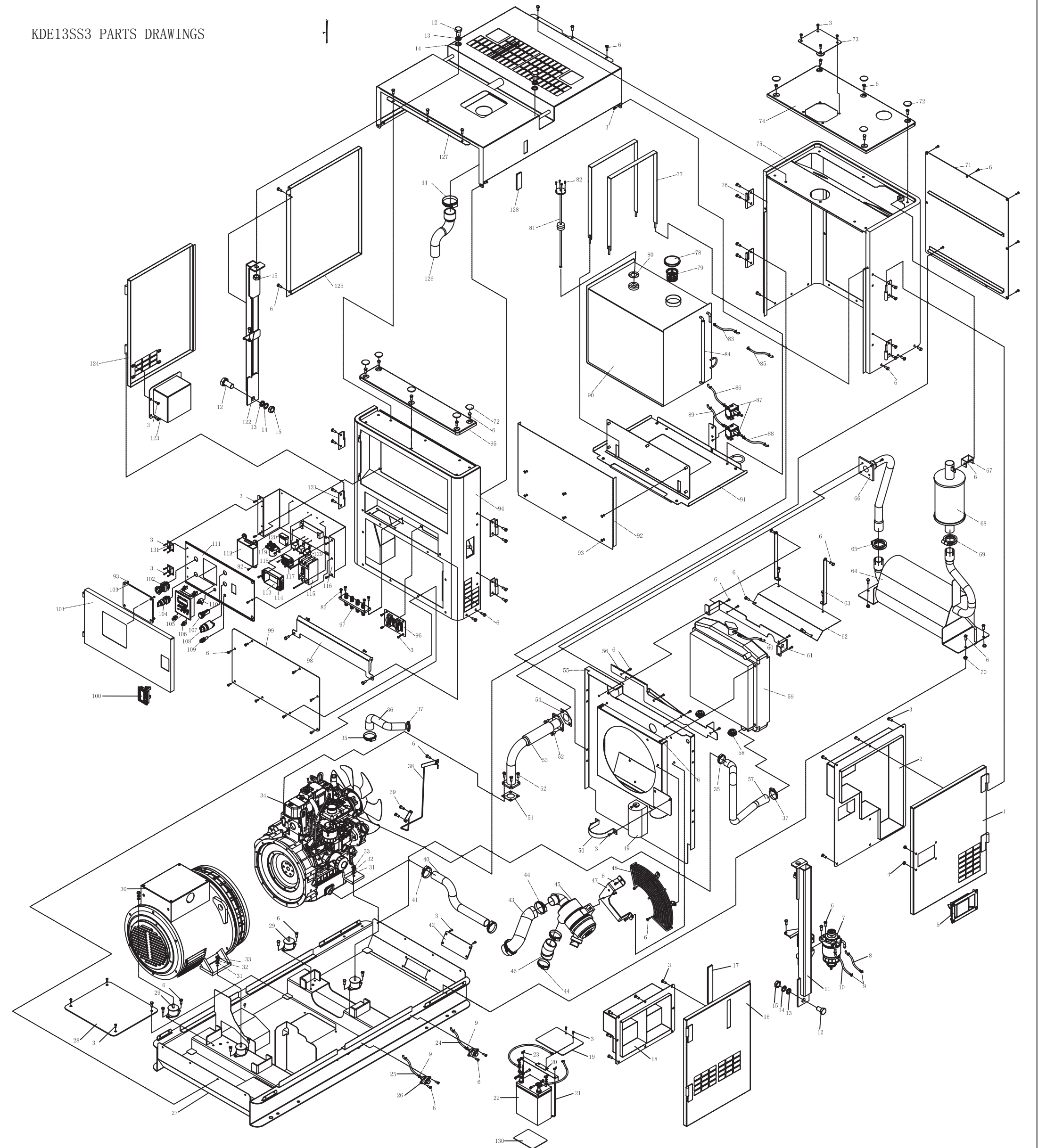


KDE13SS3 PARTS DRAWINGS



No.	Part no.	Description	Qty	No.	Part no.	Description	Qty	No.	Part no.	Description	Qty	No.	Part no.	Description	Qty	No.	Part no.	Description	Qty	No.	Part no.	Description	Qty	No.	Part no.	Description	Qty	No.	Part no.	Description	Qty
1	KDE15SS-07300	Right door(→) weldment	1	18	KDE15SS-07410	Right door(→) air duct weldment	1	35	QC/T619-1999	Pipe clip 25-38	1	52	GB/T5789-1986	Flange bolt M8*25	6	69	KDE15SS-10002	Bicircle pipe board(→)	1	86	KDE15SS-14018	Fuel inlet pipe of fuel tank(→)	1	103	KDE15SS-04902	Synthetic glass of instrument door	1	120	BX2041C	Four circuit fuse box	1
2	KDE15SS-07310	Right door(→) air duct weldment	1	19	KDE15SS-03014	Insulated cover of battery	1	36	KDE15SS-11002	Inlet pipe of water tank	1	53	KDE15SS-10010	Exhaust pipe(→) weldment	1	70	GB/T61177.1-2000	Flange nut M8	4	87	KD388-10400	Electric fuel delivery pump	2	104	M3SS3-10B	Select switch of filling pump	1	121	KDE15SS-07110	Hinge(→) weldment	4
3	GB/T5789-1986	Flange bolt M6*12	53	20	KDE15SS-03010	Press plate weldment of battery	1	37	QC/T619-1999	Pipe clip 35-51	2	54	KD388-08006	Washer	1	71	KDE15SS-06500	Cover plate weldment of rear wall	1	88	KDE15SS-14014	Fuel delivery pipe(→) of fuel tank	1	105	PLY-MB3-ATS-D	Display	1	122	KDE15SS-05100	Left central pillar assy.	1
4	GB/T61177.1-2000	Flange nut M8	8	21	KDE15SS-03013	Pulling plug of press plate	2	38	KDE15SS-04740	Wire fixed bracket weldment	1	55	KDE15SS-06400	Capacitor assembly weldment of water tank	1	72	KDE35ST-04001	Waterproof cover	10	89	KDE15SS-14015	Fuel delivery pipe(→) of fuel tank	1	106	KDE6700TA-13410	Display location assy.	4	123	KDE15SS-07230	Left door(→) air duct weldment	1
5	KDE35ST-07100-M	Door lock assy.	1	22	65AH-12V	Battery	1	39	GB/T5789-1986	Flange bolt M10*12	2	56	KDE15SS-06440	Rear side plate weldment	1	73	KDE15SS-06602	Cover plate of water tank post	1	90	KDE15SS-14000	Fuel tank assy.	1	107	XD12 AC220V (56A)	Power light	1	124	KDE15SS-07200	Left door(→) weldment	1
6	GB/T5789-1986	Flange bolt M6*12	103	23	GB/T62-1988	Battery nut M6	4	40	KD388-09008	Oil drain rubber pipe	1	57	KDE15SS-11001	Outlet pipe of water tank	1	74	KDE15SS-06600	Top cover plate weldment of rear wall	1	91	KDE15SS-04700	Fuel tank spirit assembly weldment	1	108	JK427	Ignition switch	1	125	KDE15SS-07100	Left door(→) weldment	1
7	DX200M	Oil-water separator assy	1	24	KDE15SS-11004	Outlet pipe of water tank	1	41	QC/T619-1999	Pipe clip 25-38	2	58	KDE15SS-12200	Damping block of water tank	2	75	KDE15SS-06000	Rear wall assembly weldment	1	92	KDE15SS-04706	Fuel tank baffle	1	109	BX201C	Fusee box	1	126	KDE15SS-01003	Inlet pipe of air cleaner	1
8	KDE15SS-14016	Fuel inlet pipe(→) of fuel tank	1	25	KDE15SS-14011	Fuel drained pipe of fuel tank	1	42	KDE15SS-03006	Chassis cover platelet(→)	1	59	KD388-17400	Radiator assy.	1	76	KDE15SS-07210	Hinge(→) weldment	4	93	GB/T6177.1-2000	Nut M6	6	110	WX140-11 2.2K	Potentiometer	1	127	KDE15SS-08000	Top cover welding assy.	1
9	KM168F-30011	Fuel pipe clip	18	26	KD388-17610	Welding part of water drainage fuel tank assy	2	43	KDE15SS-01002	Outlet pipe(→) of air cleaner	1	60	KDE15SS-11003	Overflow pipe of water tank	1	77	KDE15SS-14010	Fixed metal cap weldment of fuel tank	2	94	KDE15SS-04000	Front wall assembly weldment	1	111	KDE15SS-13110	Panel weldment	1	128	KDE15SS-08007	Signe glass of top cover perspective window	1
10	KDE15SS-14017	Fuel inlet pipe(→) of fuel tank	1	27	KDE15SS-03000	Chassis weldment assy.	1	44	QC/T619-1999	Pipe clip 51-70	5	61	KDE15SS-06430	Fixed bracket weldment of water tank cover plate	1	78	KDE19T3-14200	Fuel tank cover	1	95	KDE15SS-04210	Top cover plate weldment of front wall	1	112	PLT-MB3-ATS-C	Control module	1	129	HFV4 12V 20A	Minitype replay	3
11	KDE15SS-05200	Right central pillar assy	1	28	KDE15SS-03005	Chassis cover platelet(→)	1	45	KDE15SS-01200	Air cleaner assy.	1	62	KDE15SS-06460	Cover plate weldment of water tank	1	79	KM168F-10004	Oil filler filter strainer	1	96	YAFK230CE-13410	Output plate of receptacle	1	113	PLY-DAYR-95S3	AVR	1	130	KDE15SS-03015	Rubber gasket of battery	1
12	GB/T5789-1986	Flange bolt M16*40	4	29	KDE15SS-12100	Damping block	4	46	KDE15SS-01001	Outlet pipe(→) of air cleaner	1	63	KDE15SS-06462	Mounting plate of water tank cover plate	2	80	KDE15SS-14001	Rubber gasket of oil level indicator	1	97	KDE12STA3-13300	Output plate assy.	1	114	GB/T5789-1986	Flange bolt M5*20	7	131	GB/T7277-1987	Hinge 2.5	2
13	GB/T97.1-2002	Flat washer 16	4	30	KFS13	Alternator assy.	1	47	KDE15SS-06402	Air cleaner fixed plate	1	64	KDE15SS-10100	Muffler(→) weldment	1	81	KDE15SS-14200	Oil level indicator	1	98	KDE15SS-04004	Cover plate of connection box	1	115	D0-100EB 3P/50	Circuit breaker	1	132			
14	GB/T93-1987	Spring washer 16	4	31	GB/T97.1-2002	Flat washer 10	4	48	KD388-17300	Fan belt shield bracket part	1	65	KDE15SS-10001	Bicircle pipe card(→)	1	82	GB/T5789-1986	Flange bolt M6*20	8	99	KDE15SS-04003	Cover plate of front wall	1	116	KDE15SS-04400	Electric mounting plate weldment	1	133			
15	GB/T61177.1-2000	Flange nut M16	4	32	GB/T93-1987	Spring washer 10	4	49	KDE19T3-10001	Antifreeze pot	1	66	KDE15SS-10020	Exhaust pipe(→) weldment	1	83	KDE15SS-14012	Return oil pipe(→)	1	100	KDE12E-08350	Door lock	1	117	PLY-CDQ-36AH	Charging regulator	1	134			
16	KDE15SS-07400	Right door(→) weldment	1	33	GB/T61177.1-2000	Flange nut M10	4	50	KDE15SS-06472	Water bottle fixed plate	1	67	KDE15SS-06102	Connection board	1	84	KDE15SS-14106	Oil scale pipe	1	101	KDE15SS-04900	Instrument door weldment	1	118	GB/T5789-1986	Flange bolt M5*14	7	135			
17	KDE15SS-07402	Open door right door(→) perspective view	1	34	KD388	Engine assy.	1	51	KD388-08003	Outlet pipe gasket	1	68	KDE15SS-10200	Muffler(→) weldment	1	85	KDE15SS-14013	Return oil pipe(→)	1	102	GEAT-10R-11	Emergency button	1	119	QDC-100 DC12	Preheated replay	1	136			