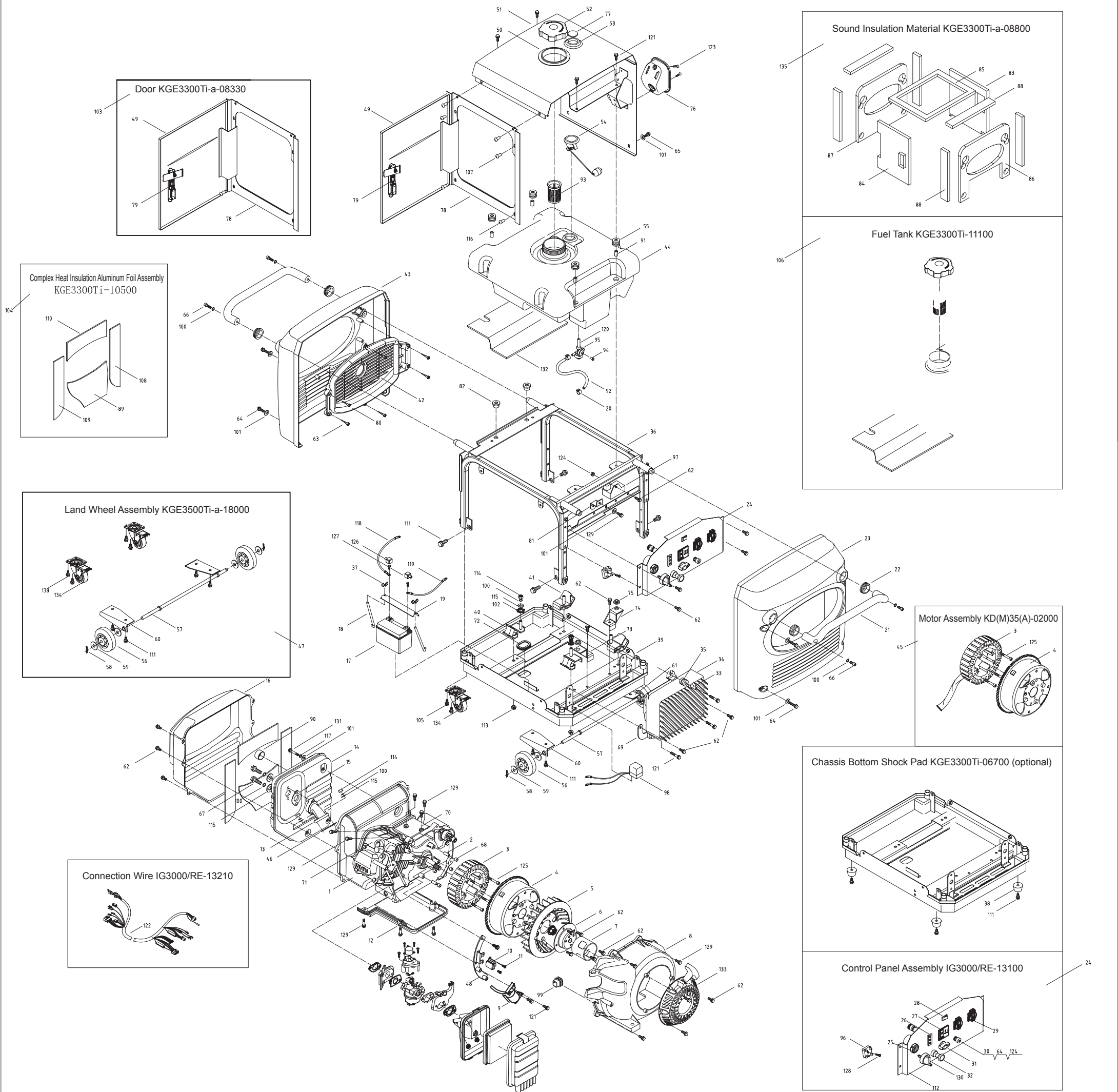


ASSEMBLY AND PARTS DRAWING

IG3000



No.	Part No.	Description	Qty.	No.	Part No.	Description	Qty.	No.	Part No.	Description	Qty.	No.	Part No.	Description	Qty.	No.	Part No.	Description	Qty.					
1	KG205GETi-00000	Gasoline engine	1	28	RF-1003-BB2	Boat shaped switch	1	55	KGE3300Ti-11003	Fuel tank spring washer	4	82	KGE3300Ti-08716	Machine frame pad	2	109	KGE3300Ti-10503	Complex heat insulation aluminum foil	1					
2	KD (M) 30 (A) -02205	Stator location pin	2	29	16A 250V	E-type single phase receptacle	2	56	5GF-LDE-03600	Land wheel	2	83	KGE3300Ti-08801a	Inner labeled sponge of machine cabinet left side plate	1	110	KGE3300Ti-10504	Complex heat insulation aluminum foil	1					
3	KD0035(A)-02100	Rotor assembly	1	30	3GF-LE-5004a	Grounding nut M6	1	57	KGE3500Ti-18100	Axle welded	1	84	KGE3300Ti-a-08802a	Inner labeled sponge of machine cabinet door plate	1	111	GB/T5789-2000	Hexagonal flange bolt M8X16	16					
4	KD (M) 35 (A) -02200	Rotor assembly	1	31	KGE3300Ti-11005	Oil tank switch adjusting pipe	1	58	QC/T623-1999	Lock pin 12	2	85	KGE3300Ti-08803a	Inner labeled sponge of machine cabinet upper cover plate	1	112	IG3000/RE-13110	Control panel	1					
5	KGE3300Ti-05001	Fan	1	32	KGE3500Ti-14000	Choke grip	1	59	GB/T96.2-2002	Big washer 12	4	86	KGE3300Ti-08804a	Inner labeled sponge of front cover	1	113	GB/T6177.1-2000	Hexagonal flange nut M8	4					
6	KGE2800Ti-03010	Claw disc fixing plate welded	1	33	KGE3300Ti-13502	Bushing	3	60	KGE3500Ti-a-18200	Right supporting plate subassembly	1	87	KGE3300Ti-08805a	Inner labeled sponge of rear cover	1	114	GB/T6170-2000	Nut M8	6					
7	KG160-05005a	Starter puller	1	34	DU30	Inverter unit	1	61	KGE3500Ti-a-18300	Left supporting plate subassembly	1	88	KGE3300Ti-08808a	Inner labeled sponge of front and rear cover	6	115	GB/T97.1-2002	Washer 8	8					
8	KGE3300Ti-04001	Wind scooper	1	35	KGE3300Ti-13501	Shock pad	3	62	GB/T5789-2000	Hexagonal flange bolt M6X12	26	89	KGE3300Ti-10501	Complex heat insulation aluminum foil	1	116	GB/T818-2000	Plus screw M6X16	2					
9	KGE3300Ti-13300	Ignition coil	1	36	KGE3300Ti-08700	Framework welded	1	63	GB/T845-1985	Self-tapping screw ST-4.8X18	6	90	KGE3300Ti-10400	Fireproof cap subassembly	1	117	GB/T93-1987	Elastic washer 6	3					
10	KGE3500Ti-13601	Trigger	1	37	GB/T62-1988	Butterfly nut M6	2	64	GB/T5789-2000	Hexagonal flange bolt M6X25	9	91	KGE3300Ti-11004	Fuel tank spring washer sleeve	4	118	AWG10 (Black)	Battery connection (-)	1					
11	GB/T818-2000	Screw M4X10	1	38	KGE3300Ti-06700	Shock pad of chassis bottom	4	65	GB/T5789-2000	Hexagonal flange bolt M6X16	2	92	KGE3300Ti-11007	Fuel supplying pipe	1	119	AWG10 (Red)	Battery connection (+)	1					
12	KGE3300Ti-01010	Cylinder base cover	1	39	KGE3300Ti-a-03000	Chassis assembly	1	66	GB/T70.1-2000	Inner hexagonal bolt M8X20	4	93	KGE3300Ti-11008	Oil filling port strainer	1	120	KGE3300Ti-11410	Long strainer	1					
13	KGE3300Ti-10301	Muffle elbow pipe	1	40	KGE3300Ti-12100	Shock pad	2	67	GB/T5789-2000	Hexagonal flange bolt M8X60	2	94	KGE3300Ti-11016	Screw	1	121	GB/T5789-2000	Hexagonal flange bolt M6X25	9					
14	KGE3300Ti-10100	Muffle body assembly	1	41	KGE3300Ti-12200	Shock pad	2	68	KD (M) 30 (A) -02206	Stator location pin	4	95	KGE3300Ti-11400	Oil switch subassembly	1	122	IG3000/RE-13210	Connecting wire	1					
15	KGE3300Ti-10303	Gasket B	1	42	KGE3300Ti-08601	Exhausting window	1	69	KGE3300Ti-13510	Module connection plate	1	96	KBPC2510	Rectifier	1	123	GB/T818-2000	Screw M6X16	2					
16	KGE3300Ti-10210	Muffle cover welded	1	43	KGE3300Ti-08501	Rear cover	1	70	KGE3300Ti-01020	Air conduct plate	1	97	SFCD9AH/KYCD9AH	Charging regulator	1	124	GB/T6177.1-2000	Hexagonal flange nut M6	2					
17	6-FM-9	Battery 12V/9Ah	1	44	KGE3300Ti-11001	Fuel tank	1	71	KGE3300Ti-01030	Cylinder head air conduct plate	1	98	GY6	Starting relay	1	125	GB/T70.1-2000	Inner hexagonal bolt M6X60	4					
18	KGE3300Ti-17002	Battery fixing bolt	2	45	KD0035(A)-02000	Motor assembly	1	72	KGE3300Ti-03003	Chassis oil drain port plug	1	99	KGE3300Ti-13002	Centra line seal ring	1	126	KGE3300Ti-17004	Battery connecting sheath (black)	1					
19	KGE3300Ti-17001a	Battery pressure plate	1	46	KG160-02014	Exhaust pipe gasket	1	73	KGE3300Ti-03100	Shock pad pressing plate welded	1	100	GB/T93-1987	Elastic washer 8	12	127	KGE3300Ti-17004	Battery connecting sheath (red)	1					
20	QC/T620-1999	A type hoop 8-12	2	47	KGE3500Ti-a-18000	Land wheel assembly	1	74	KGE3300Ti-03200	Shock pad pressing plate welded	1	101	GB/T97.1-2002	Big washer 6	14	128	GB/T818-2000	Plus screw M5X20	1					
21	KGE3300Ti-08201-100	Handle inner frame welded	2	48	KGE3300Ti-13320	Ignition coil bracket welded	1	75	KDE5000X-30003	Shock pad	2	102	GB/T862.2-1987	Tighten washer 8	1	129	GB/T5789-2000	Hexagonal flange bolt M6X18	14					
22	KGE3300Ti-08204	Handle rubber sheath	4	49	KGE3300Ti-a-08310	Machine cabinet door welded	1	76	KGE3300Ti-08104	Handling panel cover	1	103	KGE3300Ti-a-08300	Door	1	130	JK427A-1	Electric starting switch key	1					
23	KGE3300Ti-08401	Front cover	1	50	KGE3300Ti-08108a	Fuel tank port protection sleeve	1	77	KGE3300Ti-08107	Float window glass	1	104	KGE3300Ti-10500	Complex heat insulation aluminum foil assembly	1	131	GB/T5789-2000	Hexagonal flange bolt M6X70	3					
24	IG3000/RE-13100	Control panel assembly	1	51	KGE3300Ti-08100	Machine cabinet cover welded	1	78	KGE3300Ti-a-08320	Machine cabinet door case welded	1	105	GB/T5789-1986	Bolt M6X16	8	132	KGE3300Ti-11009	Complex Heat Insulation Aluminum Foil	1					
25	JK427A-2	Electric starter switch	1	52	KGE3300Ti-11010	Fuel tank cover assembly	1	79	KGE3300Ti-a-08330	Door lock	1	106	KGE3300Ti-11100	Fuel tank	1	133	KG160-12000a	Recoil starter	1					
26	KI-DHQ-30	Three in one igniter	1	53	KGE3300Ti-08106	Window fixed sheath	1	80	KGE3300Ti-08602	Seal strip of exhaust window	1	107	GB/T818-2000	Plus screw M6X10	6	134	21-063-01B	Universal wheel (with brake)	2					
27	WZ-22-a	DC receptacle (DC12V/5A)	1	54	KGE3300Ti-11300	Oil scale subassembly	1	81	KGE3300Ti-08709a	Connection curved plate	1	108	KGE3300Ti-10502	Complex heat insulation aluminum foil	1	135	KGE3300Ti-a-08800	Sound insulation material	1					