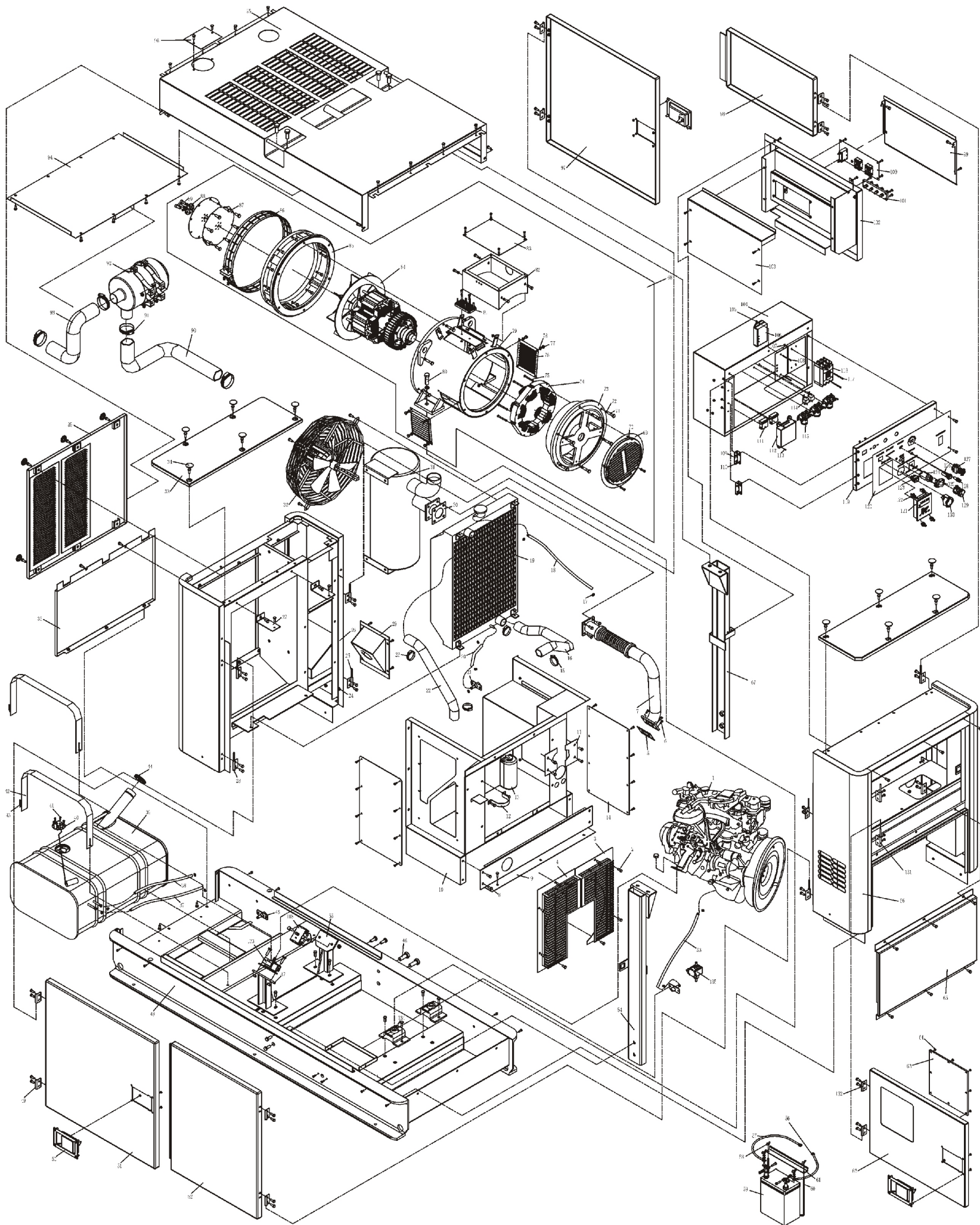


ASSEMBLY AND PARTS ALBUM

KDE30SS3



No.	Part.No	Description	Qty.	No.	Part.No	Description	Qty.	No.	Part.No	Description	Qty.	No.	Part.No	Description	Qty.
1	KM493ZG	Engine Assembly	1	35	KDE 35S T-06180	Welding Part of Rear Wall Upper Cover	1	69	KFS378-00003	Rear Cover	1	103	KD E3 5S T-075 01	Rear Covering	1
2	GB/T5783-2000	Bolt M6×16	44	36	KDE 35S T-06190	Welding Part of Rear Wall Down Cover	1	70	GB/T93-1987	Spring Washer 6	18	104	KD E3 5S T-132 00	Welding Part of Instrument Rear Cover	1
3	KDE35ST-09010	Left Welding Shield of the Fan	1	37	KDE 35S T-14001	Inflow Pipe of Fuel Tank	1	71	GB/T5782-2000	Bolt M10×40	6	105	GB /T41-2000	Nut M6	6
4	KDE35ST-09020	Right Welding Shield of the Fan	1	38	KDE 35S T-14002	Cavenger Pipe of Fuel Tank	1	72	GB/T93-1987	Spring Washer 10	6	106	PLY-SAVR-25S	Automatic Voltage Regulator	1
5	KM493G-11 18001	Gasket of Exhaust Pipe	1	39	KDE 35S T-14100	Welding Part of Fuel Tank	1	73	KFS378-00002	Rear-end Baring Bracket	1	107	GB /T41-2000	Nut M8	2
6	GB/T5783-2000	Bolt M8×30	9	40	KDE 19T3-14040	Fuel Amount Sensor	1	74	KFS378-03000-4P	Stator Assembly of Exciter	1	108	GB /T818-2000	Screw M4×30	2
7	KDE35ST-11200	Welding Part of Exhaust Pipe	1	41	GB/T 5783-2000	Bolt M5×16	5	75	GB/T5782-2000	Bolt M6×50	4	109	GB /T7277-1987	Hinge 2.5	2
8	GB/T5783-2000	Bolt M8×16	174	42	KDE 60S T-14010	Fixing Metal Strip of Fuel Tank	2	76	KFS378-00004	Protective Board	2	110	GB /T818-2000	Screw M5×14	16
9	KDE35ST-03001	Side Board of Fuel Tank	1	43	GB/T 818-2000	Screw M6×50	4	77	GB/T5782-2000	Bolt M8×10	14	111	BX 2041C	Four-circuit Fuse Box	2
10	KDE35ST-09100	Welding Part of Air Guide Cover	1	44	KDE 60S T-14110	Fuel Tank Cover	1	78	GB/T97.1-2002	Flat Gasket 8	8	112	PLY-MB 3-C	Intelligent Control Module	1
11	KDE35ST-09004	Protecting Board of Exhaust Pipe	2	45	KDE 35S T-14003	Fuel Venting Pipe of Fuel Tank	1	79	KFS-378-00100-4P	Motor Bracket	1	113	GB /T818-2000	Screw M6×16	3
12	KDE35ST-09005-M	Fixed Plate of Water Bottle	1	46	GB/T 5783-2000	Bolt M16×25	8	80	GB/T5782-2000	Bolt M18×55	2	114	HF V4 12V 20A	Mini-type Relay	2
13	KDE19T3-10001	Antifreeze Can	1	47	KDE 30S T-01020	Welding Part of Engine Bracket (2)	1	81	KFS378-00200	Connecting Plate of Water Tank	1	115	QD C-100 DC 12V	Preheat Relay	3
14	KDE35ST-09001	Covering	2	48	KDE 35S T-03100	Welding Part of Base	1	82	KFS378-00310	Welding Part of Outlet Box	1	116	B0100EB	Breaker	1
15	QC/T619-1999	Clip 50	2	49	KDE 60S T-07012	Fixed Plate	8	83	KFS378-00301	Outlet Box Cover	1	117	GB /T818-2000	Screw M4×65	2
16	KDE35ST-10002	Water Flow Pipe of Water Tank	1	50	KDE 35S T-07100-M	Lock Assembly	3	84	KFS378-01000	Rotor Assembly	1	118	KM 493-1001100	Left Bracket for Motor Block Assembly	1
17	QC/T619-1999	Clip 14	6	51	KDE 35S T-07200	Welding Part of the Door (2)	1	85	KFS378-00001	Drive End Baring Bracket	1	119	KD E3 5S T3-131 10	Instrument Panel	1
18	KDE35ST-10004	Water Venting Pipe of Water Tank	2	52	KDE 35S T-07100	Welding Part of the Door (1)	1	86	KFS378-00006	Protective Meshwork	1	120	KD E3 5S T3-131 21	PVC Sticker	1
19	KDE35ST-10100	Radiator Assembly	1	53	KDE 35S T-01003	Oil Venting Pipe	1	87	KFS378-00007	Coupling Slice	2	121	PLY-MB 3-D	Intelligent Display Screen	1
20	KDE35ST-10003	Overflow Pipe of Water Tank	1	54	KDE 35S T-05100	Welding Part of Right Upright Post	1	88	KFS378-00008	Pad	1	122	KD E6 700 TA-1341 0	Display Positioning	4
21	KDE35ST-03020-M	Welding Part of Fuel Venting Pipe	2	55	KDE 30S T-01010	Welding Part of Engine Bracket (1)	1	89	GB/T70.2-2000	Inner Hexagon Screw	6	123	RF 1004	Rockerswitch	1
22	KDE35ST-10001	Inflow Pipe of Water Tank	1	56	KDE 35S T-13210 (B)	Negative Connecting of Battery	2	90	KDE35ST-01002	Air Cleaner Pipe (2)	1	124	JK427	Ignition Switch	1
23	QC/T619-1999	Clip 40	2	57	KDE 35S T-13210 (R)	Positive Connecting of Battery	2	91	QC/T619-1999	Clip 70	3	125	XD J2 DC 12V	Panel Light	1
24	GB/T41-2000	Nut M8	24	58	GB/T 62-1988	Butterfly Nut M6	4	92	KDE30ST-01200	Air Cleaner	1	126	XD J2 AC 220V	Electricity Power Indicating Light	1
25	KDE60ST-07020	Hinge (2)	4	59	80AH-12V	Battery	1	93	KDE35ST-01001	Air Cleaner Pipe (1)	1	127	HV W4 11ER	Emergency Stop Button	1
26	KDE35ST-06000	Rear Wall Assembly	1	60	KDE 30S T-18001	Press Plate of Battery	2	94	KDE35ST-08010	Welding Part of Covering	1	128	BX 201C	Fuse Box	1
27	KDE60ST-06001	Connecting Plate of Water Tank	2	61	KDE 5000 F-03002	Puller of Battery	4	95	KDE35ST-08100	Welding Part of the Covering	1	129	WX 111-2K ±10%	Voltage Adjusting Knob	1
28	KDE60ST-07010	Hinge (1)	4	62	KDE 35S T-04020	Instrument Door	1	96	KDE35ST-08001-M	Covering of Water Filler Port	1	130	8111-12V	Fuel Gauge	1
29	KDE35ST-04020-M	Welding Part of Fuel Tank Port Cover Board	1	63	KDE 35S T-01001	Organic Glass	1	97	KDE35ST-07300	Welding Part of the Door (3)	1	131	KD E3 5S T-070 10	Hinge (→)	2
30	KDE60ST-11001	Gasket of Exhaust Pipe (1)	1	64	GB/T 41-2000	Nut M6	8	98	KDE35ST-07400	Welding Part of the Door (4)	1	132	KD E3 5S T-070 12	Fixed Plate	2
31	KDE35ST-11 100	Welding Part of Muffler	1	65	KDE 35S T-04010	Welding Part of Rear Cover Board	1	99	KDE35ST-07502	Front Covering	1	133	KM 493-1001200	Right Bracket for Motor Block Assembly	1
32	450FZL-C6P35S4D	Aerofoil Fan	1	66	KDE 35S T-04100	Welding Part of Front Upright Post	1	100	KDE30T100TA3-13100H	Outlet Board Assembly of the Socket	1	134	BE-160	Damper	2
33	KDE35ST-06150	Welding Part of Rear Wall Cover Board	2	67	KDE 35S T-05200	Welding Part of Left Upright Post	1	101	KDE12STA3-13300	Outlet Board Assembly	2	135	KD 388-10400	Electric Fuel Delivery Pump	1
34	KDE35ST-04001-M	Waterproof Cover	16	68	KFS 30	Generator Assembly	1	102	KDE35ST-07501	Welding Part of Joint Box	1	136			

KIPOR POWER CO., LTD.

Beside Jingyi Rd, Third-stage Development Section of Wangzhuang Industry Area, Wuxi High & New Technology Industry Development Zone. TEL: 0086-510-85200888 FAX: 0086-510-85200999