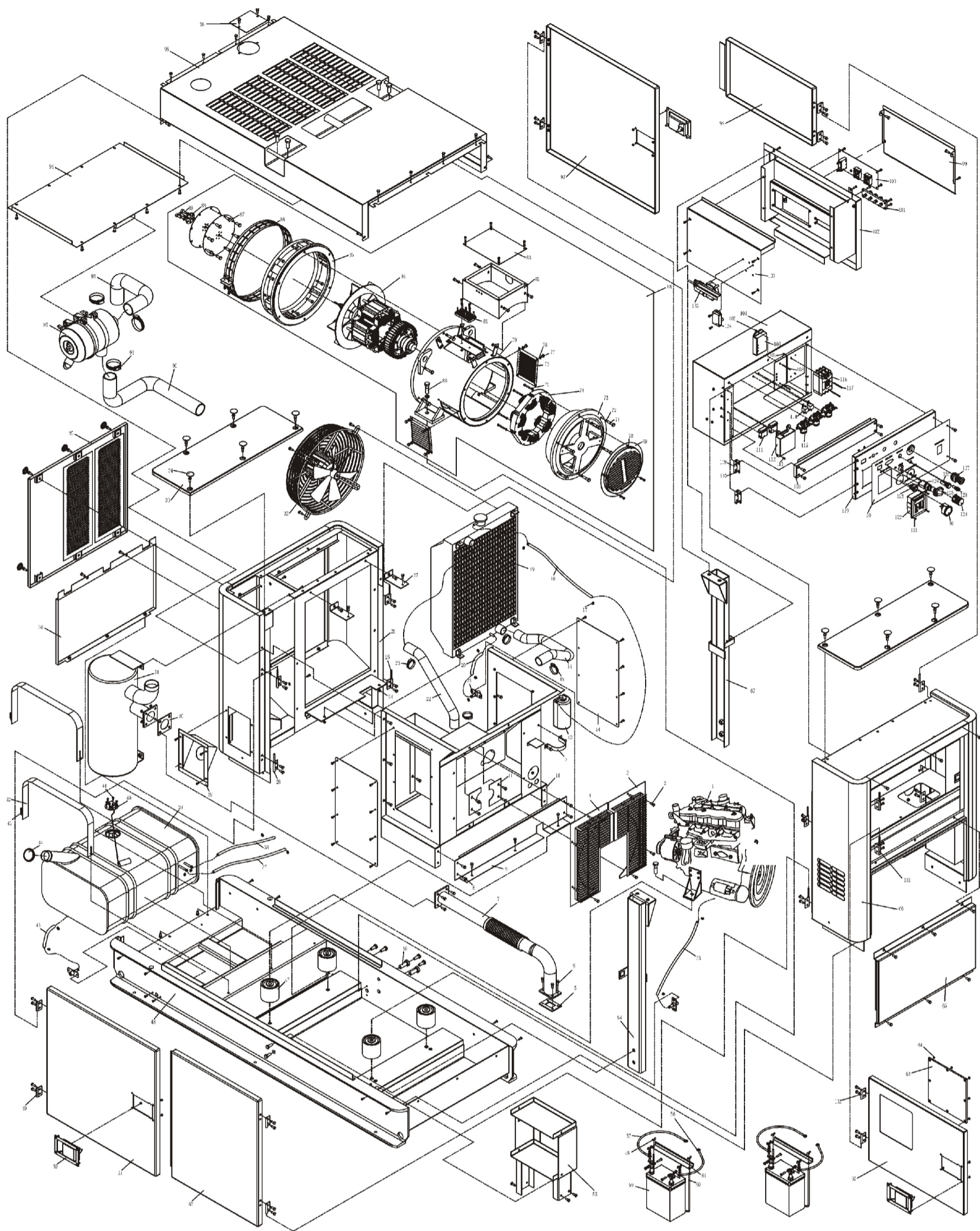


ASSEMBLY AND PARTS ALBUM

KDE45SS3



No.	Part.No	Description	Qty.	No.	Part.No	Description	Qty.	No.	Part.No	Description	Qty.	No.	Part.No	Description	Qty.
1	KD4105G	Engine Assembly	1	35	KDE60ST-06180	Rear Wall Top Cover Welding Parts	1	69	KFS378-00003	Rear Cover	1	103	KDE60ST-07501	Rear Covering	1
2	GB/T5783-2000	Bolt M6 × 16	44	36	KDE60ST-06190	Rear Wall Bottom Cover Welding Parts	1	70	GB/T93-1987	Spring Washer 6	18	104	KDE60ST-13200	Welding Part of Instrument Rear Cover	1
3	KDE60ST-09010	Left Welding Shield of the Fan	1	37	KDE60ST-14001	Fuel Tank Inlet Pipe	1	71	GB/T5782-2000	Bolt M10 × 40	6	105	GB/T41-2000	Nut M5	6
4	KDE60ST-0-020	Right Welding Shield of the Fan	1	38	KDE60ST-14002	Fuel Tank Fuel Return Pipe	1	72	GB/T93-1987	Spring Washer 10	6	106	PLY-SAVR-25S	Automatic Voltage Regulator	1
5	KD4105Z-1118001	Connecting Gasket of Turbocharger	1	39	KDE60ST-14100	Fuel Tank Welding Parts	1	73	KFS378-00002	Rear-end Baring Bracket	1	107	GB/T11-2000	Nut M4	6
6	GB/T5783-2000	Bolt M8 × 30	8	40	KDE019T3-11040	Fuel Amount Sensor	1	74	KFS378-03000-4P	Stator Assembly of Exciter	1	108	GB/T818-2000	Screw M4 × 30	2
7	KDE45ST-11200	Welding Part of Exhaust Pipe	1	41	GB/T5783-2000	Bolt M5 × 16	5	75	GB/T5782-2000	Bolt M6 × 50	4	109	GB/T7277-1987	Hinge 2.5	2
8	GB/T5783-2000	Bolt M8 × 16	174	42	KDE60ST-14010	Fixing Metal Strip of Fuel Tank	2	76	KFS378-00004	Protective Board	2	110	GB/T818-2000	Screw M5 × 14	16
9	KDE60ST-03202	Side Board of Fuel Tank	1	43	GB/T818-2000	Screw M6 × 50	4	77	GB/T5782-2000	Bolt M8 × 10	14	111	DX2041	Four-circuit Fuse Box	2
10	KDE60ST-09100	Welding Part of Air Guide Cover	1	44	KDE60ST-14110	Fuel Tank Cover	1	78	GB/T97.1-2002	Flat Gasket 8	8	112	PLY-MB3-C	Intelligent Control Module	1
11	KDE60ST-09004	Protecting Board of Exhaust Pipe	2	45	KDE60ST-14003	Fuel Tank Drain Pipe	1	79	KFS378-00100-4P	Motor Bracket	1	113	GB/T818-2000	Screw M6 × 16	3
12	KDE35ST-09005-M	Water Bottle Fixing Plate	1	46	GB/T5783-2000	Bolt M6 × 25	8	80	GB/T5782-2000	Bolt M18 × 55	2	114	HFV124V 20-30A	Micro Relay	2
13	KDE19T3-10001	Antifreeze Can	1	47	HC-90	Damping Block	4	81	KFS378-00200	Terminal Box Assembly	1	115	QDC-100	Preheat Relay	3
14	KDE60ST-09001	Cover Board	2	48	KDE60ST-03100	Welding Part of Chassis	1	82	KFS378-00310	Welding Part of Terminal Box	1	116	B0100EB	Breaker	1
15	QC/T619-1999	Attachment Clip 50	2	49	KDE60ST-07012	Fixed Plate	8	83	KFS378-00301	Terminal Box Cover Board	1	117	GB/T818-2000	Screw M4 × 65	2
16	KDE60ST-10002	Water Flow Pipe of Water Tank	1	50	KDE35ST-07100-M	Lock Assembly	3	84	KFS378-01000	Rotor Assembly	1	118	KDE60ST-05003	Accelerograph Control Board	1
17	QC/T619-1999	Attachment Clip14	6	51	KDE60ST-07200	Welding Part of the Door (II)	1	85	KFS378-00001	Drive End Baring Bracket	1	119	KDE60STA3-13110	Instrument Panel	1
18	KDE60ST-10001	Water Venting Pipe of Water Tank	2	52	KDE60ST-07200	Welding Part of the Door (I)	1	86	KFS378-00006	Protecting Wire Net	1	120	KDE45STA3-23120	PVC Sticker	1
19	KDE60ST-10100	Radiator Assembly	1	53	KDE60ST-01003	Oil Venting Pipe	1	87	KFS378-00007	Coupling Slice	2	121	GB/T819.2-2000	Screw M4 × 25	4
20	KDE60ST-10003	Over Flow Pipe of Water Tank	1	54	KDE60ST-05100	Welding Part of Right Upright Post	1	88	KFS378-00008	Pad	1	122	PYL-MB3-D	Intelligent Display Screen	1
21	KDE35ST-03020-M	Welding Part of Fuel Venting Pipe	2	55	KDE60ST-03160	Welding Part of Storage Battery Bracket (I)	1	89	GB/T70.2-2000	Socket Head Screw M10 × 25	6	123	1020 15A 250V	Rocker Switch	1
22	KDE60ST-1000	Water Tank Inlet Pipe	1	56	KDE60ST-13210(B)	Negative Connecting of Battery	2	90	KDE60ST-01002	Air Cleaner Pipe (II)	1	124	JK427	Ignition Switch	1
23	QC/T619-1999	Attachment Clip 40	2	57	KDE60ST-13210(R)	Positive Connecting of Battery	2	91	QC/T619-1999	Attachment Clip 70	3	125	XDJ2 DC24V	Panel Light	1
24	GB/T41-2000	Nut M8	24	58	GB/T62-1988	Butterfly Nut M6	4	92	Forland 1522	Air Cleaner	1	126	XDJ2 AC220V	Electricity Power Indicating Light	1
25	KDE60ST-07020	Hinge (II)	4	59	80AH-12V	Battery	2	93	KDE45ST-01001	Air Cleaner Pipe (I)	1	127	HVW411ER	Emergency stop Button	1
26	KDE60ST-06000	Rear Wall Assembly	1	60	KDE30ST-18001	Press Plate of Battery	2	94	KDE60ST-08010	Welding Part of Covering	1	128	BX201C	Fuse Box	1
27	KDE60ST-06001	Water Tank Connecting Plate	2	61	KDE50002-03002	Puller of Battery	4	95	KDE60ST-08100	Welding Part of Top Covering	1	129	WX111-2K ₀ ± 10%	Voltage Adjusting Knob	1
28	KDE60ST-07010	Hinge (I)	4	62	KDE60ST-04020	Instrument Door	1	96	KDE35ST-08001-M	Covering of Water Filler Port	1	130	8111-24V	Fuel Gauge	1
29	KDE35ST-04020-M	Fuel Tank Port Cover Board Welding Parts	1	63	KDE60ST-04001	Organic Glass	1	97	KDE60ST-07300	Welding Part of the Door (II)	1	131	KDE35ST-07010	Hinge (I)	2
30	KDE60ST-1000	Exhaust Pipe Gasket (I)	1	64	GB/T41-2000	Nut M6	8	98	KDE60ST-07300	Welding Part of the Door (IV)	1	132	KDE35ST-07012	Fixed Plate	2
31	KDE60ST-12100	Muffler Welding Parts	1	65	KDE60ST-01010	Welding Part of Rear Cover Board	1	99	KDE60ST-07502	Front Cover Board	1	133	KDE60ST-13700	Turbine Scroll Bar Type Stalling Part	1
32	450FZL-C6P35S4D	Aerofoil Fan	1	66	KDE60ST-04100	Welding Part of Front Upright Post	1	100	KDE30-100TA3-13100H	Outlet Board Assembly of the Socket	1	134	KRT-TURBO-24V	Turbine Scroll Bar Control Module	1
33	KDE600ST-06150	Rear Wall Cover Board Welding Parts	2	67	KDE60ST-05200	Welding Part of Left Upright Post	1	101	KDE12STA3-13300	Outlet Board Assembly	2				
34	KDE35ST-04001-M	Waterproof Cover	16	68	KFS45	Generator Assembly	1	102	KDE60ST-07510	Welding Part of Joint Box	1				

KIPOR POWER CO., LTD.

Beside Jingyi Rd, Third-stage Development Section of Wangzhuang Industry Area, Wuxi High & New Technology Industry Development Zone. TEL: 0086-510-85205041 FAX: 0086-510-85203796