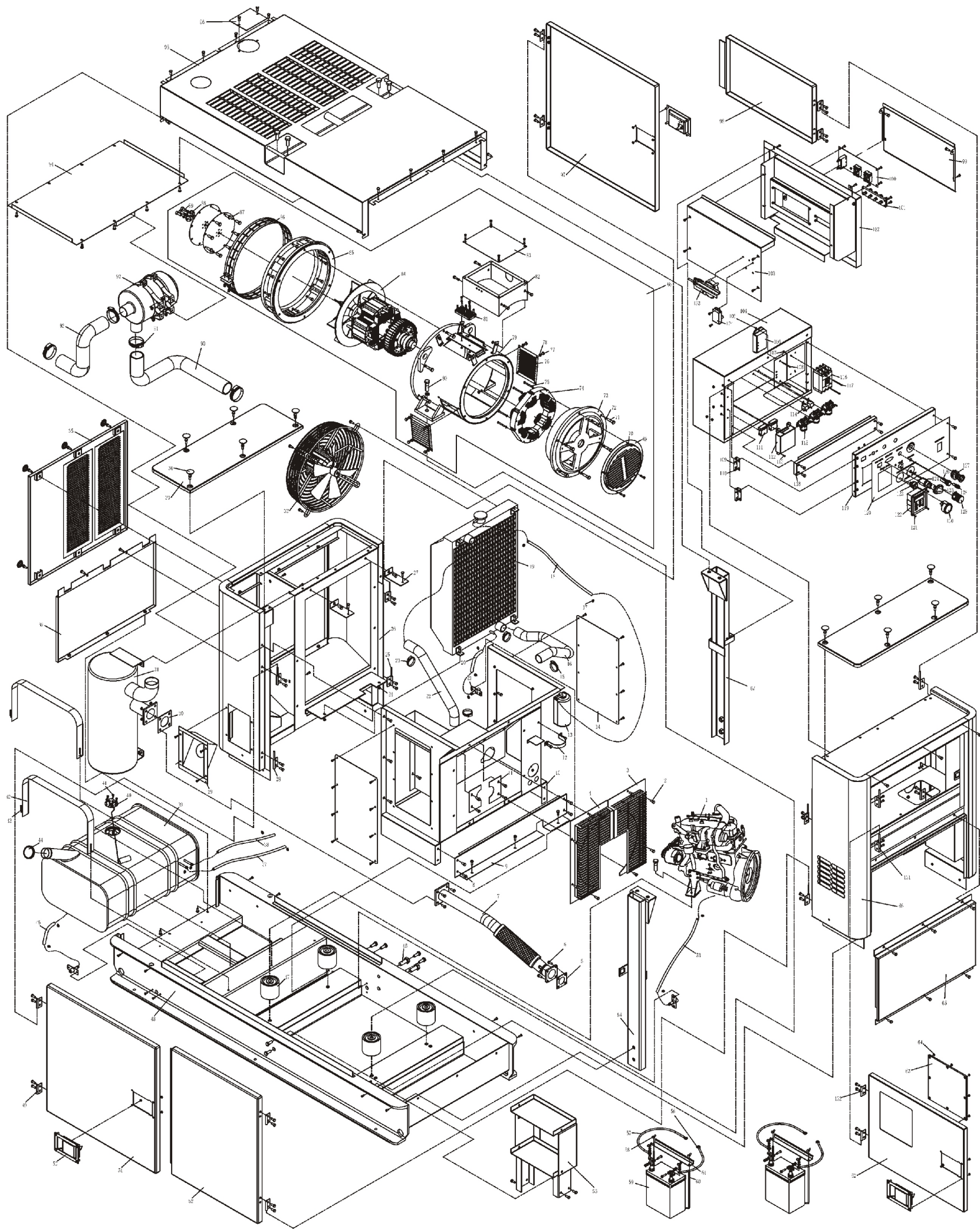


ASSEMBLY AND PARTS ALBUM

KDE60SS3



| No. | Part.No | Description | Qty. | No. | Part.No | Description | Qty. | No. | Part.No | Description | Qty. | No. | Part.No | Description | Qty. |
|-----|-----------------|--|------|-----|---------------------|---|------|-----|---------------------|----------------------------------|------|-----|--------------------|---------------------------------------|------|
| 1 | KD4105G | Engine Assembly | 1 | 35 | KDE 60S T-06180 | Rear Wall Top Cover Welding Parts | 1 | 69 | KFS378-00003 | Rear Cover | 1 | 103 | KD E6 0S T-075 01 | Rear Covering | 1 |
| 2 | GB/T5783-2000 | Bolt M6×16 | 44 | 36 | KDE 60S T-06190 | Rear Wall Bottom Cover Welding Parts | 1 | 70 | GB/T93-1987 | Spring Washer 6 | 18 | 104 | KD E6 0S T-132 00 | Welding Part of Instrument Rear Cover | 1 |
| 3 | KDE60ST-09010 | Left Welding Shield of the Fan | 1 | 37 | KDE 60S T-14001 | Fuel Tank Inlet Pipe | 1 | 71 | GB/T5782-2000 | Bolt M10×40 | 6 | 105 | GB /T41-2000 | Nut M6 | 6 |
| 4 | KDE60ST-09020 | Right Welding Shield of the Fan | 1 | 38 | KDE 60S T-14002 | Fuel Tank Inlet Return Pipe | 1 | 72 | GB/T93-1987 | Spring Washer 10 | 6 | 106 | PLY-SAVR-25S | Automatic Voltage Regulator | 1 |
| 5 | KDE60ST-10002 | Gasket of Exhaust Pipe | 1 | 39 | KDE 60S T-14100 | Fuel Tank Welding Parts | 1 | 73 | KFS378-00002 | Rear-end Baring Bracket | 1 | 107 | GB /T11-2000 | Nut M4 | 6 |
| 6 | GB/T5783-2000 | Bolt M8×30 | 8 | 40 | KDE 019T3-11040 | Fuel Amount Sensor | 1 | 74 | KFS378-03000-4P | Stator Assembly of Exciter | 1 | 108 | GB /T818-2000 | Screw M4×30 | 2 |
| 7 | KDE60ST-11200 | Welding Part of Exhaust Pipe | 1 | 41 | GB/T 5783-2000 | Bolt M5×16 | 5 | 75 | GB/T5782-2000 | Bolt M6×50 | 4 | 109 | GB /T7277-1987 | Hinge 2.5 | 2 |
| 8 | GB/T5783-2000 | Bolt M8×16 | 174 | 42 | KDE 60S T-14010 | Fixing Metal Strip of Fuel Tank | 2 | 76 | KFS378-00004 | Protective Board | 2 | 110 | GB /T818-2000 | Screw M5×14 | 16 |
| 9 | KDE60ST-03202 | Side Board of Fuel Tank | 1 | 43 | GB/T 818-2000 | Screw M6×50 | 4 | 77 | GB/T5782-2000 | Bolt M8×10 | 14 | 111 | DX 2041 | Four-circuit Fuse Box | 2 |
| 10 | KDE60ST-09100 | Welding Part of Air Guide Cover | 1 | 44 | KDE 60S T-14110 | Fuel Tank Cover | 1 | 78 | GB/T97.1-2002 | Flat Gasket 8 | 8 | 112 | PLY-MB 3-C | Intelligent Control Module | 1 |
| 11 | KDE60ST-09004 | Protecting Board of Exhaust Pipe | 2 | 45 | KDE 60S T-14003 | Fuel Tank Drain Pipe | 1 | 79 | KFS378-00100-4P | Motor Bracket | 1 | 113 | GB /T818-2000 | Screw M6×16 | 3 |
| 12 | KDE35ST-09005-M | Water Bottle Fastening Plate | 1 | 46 | GB/T 5783-2000 | Bolt M6×25 | 8 | 80 | GB/T5782-2000 | Bolt M18×55 | 2 | 114 | HF V1 24V 20/30A | Micro Relay | 2 |
| 13 | KDE19T3-10001 | Antifreeze Can | 1 | 47 | HC-90 | Damping Block | 4 | 81 | KFS378-00200 | Terminal Box Assembly | 1 | 115 | QD C-100 | Preheat Relay | 3 |
| 14 | KDE60ST-09001 | Cover Board | 2 | 48 | KDE 60S T-03100 | Welding Part of Basis | 1 | 82 | KFS378-00310 | Welding Part of Terminal Box | 1 | 116 | B0100EB | Breaker | 1 |
| 15 | QC/T619-1999 | Attachment Clip 50 | 2 | 49 | KDE 60S T-07012 | Fixed Plate | 8 | 83 | KFS378-00301 | Terminal Box Cover Board | 1 | 117 | GB /T818-2000 | Screw M4×65 | 2 |
| 16 | KDE60ST-10002 | Water Flow Pipe of Water Tank | 1 | 50 | KDE 35S T-07100-M | Lock Assembly | 3 | 84 | KFS378-01000 | Rotor Assembly | 1 | 118 | KD E6 0S T-060 03 | Accelerograph Control Board | 1 |
| 17 | QC/T619-1999 | Attachment Clip 14 | 6 | 51 | KDE 60S T-07200 | Welding Part of the Door (II) | 1 | 85 | KFS378-00001 | Drive End Baring Bracket | 1 | 119 | KD E6 0S TA3-13110 | Instrument Panel | 1 |
| 18 | KDE60ST-10001 | Water Venting Pipe of Water Tank | 2 | 52 | KDE 60S T-07200 | Welding Part of the Door (I) | 1 | 86 | KFS378-00006 | Protecting Wire Net | 1 | 120 | KD E6 0S TA3-23120 | PVC Sticker | 1 |
| 19 | KDE60ST-10100 | Radiator Assembly | 1 | 53 | KDE 60S T-01003 | Oil Venting Pipe | 1 | 87 | KFS378-00007 | Coupling Slice | 2 | 121 | GB /T819.2-2000 | Screw M4×25 | 4 |
| 20 | KDE60ST-10003 | Overflow Pipe of Water Tank | 1 | 54 | KDE 60S T-05100 | Welding Part of Right Upright Post | 1 | 88 | KFS378-00008 | Pad | 1 | 122 | PYL-MB3-D | Intelligent Display Screen | 1 |
| 21 | KDE35ST-03020-M | Welding Part of Fuel Venting Pipe | 2 | 55 | KDE 60S T-03160 | Welding Part of Storage Battery Bracket (I) | 1 | 89 | GB/T70.2-2000 | Socket Head Screw M10×25 | 6 | 123 | 1021 15A 250V | Rocker Switch | 1 |
| 22 | KDE60ST-1000 | Water Tank Inlet Pipe | 1 | 56 | KDE 60S T-13210 (B) | Negative Connecting of Battery | 2 | 90 | KDE60ST-01002 | Air Cleaner Pipe (II) | 1 | 124 | JK427 | Ignition Switch | 1 |
| 23 | QC/T619-1999 | Attachment Clip 40 | 2 | 57 | KDE 60S T-13210 (R) | Positive Connecting of Battery | 2 | 91 | QC/T619-1999 | Attachment Clip 70 | 4 | 125 | XD J2 DC 24V | Panel Light | 1 |
| 24 | GB/T41-2000 | Nut M8 | 24 | 58 | GB/T 62-1988 | Butterfly Nut M6 | 4 | 92 | Forland 1522 | Air Cleaner | 1 | 126 | XD J2 AC 220V | Electromagnetic Interlocking Light | 1 |
| 25 | KDE60ST-07020 | Hinge (II) | 4 | 59 | 80AH-12V | Battery | 2 | 93 | KDE60ST-01001 | Air Cleaner Pipe (I) | 1 | 127 | HV W4 11ER | Emergency Stop Button | 1 |
| 26 | KDE60ST-06000 | Rear Wall Assembly | 1 | 60 | KDE 30S T-18001 | Press Plate of Battery | 2 | 94 | KDE60ST-08010 | Welding Part of Covering | 1 | 128 | BX 201C | Fuse Box | 1 |
| 27 | KDE60ST-06001 | Water Tank Connecting Plate | 2 | 61 | KDE 5000 2-03002 | Puller of Battery | 4 | 95 | KDE60ST-08100 | Welding Part of Covering | 1 | 129 | WX 111-2K 0±10% | Voltage Adjusting Knob | 1 |
| 28 | KDE60ST-07010 | Hinge (I) | 4 | 62 | KDE 60S T-04020 | Instantaneous Door | 1 | 96 | KDE35ST-08001-M | Covering of Water Filler Port | 1 | 130 | 8111-24V | Fuel Gauge | 1 |
| 29 | KDE35ST-01020-M | Fuel Tank Port Cover Board Welding Parts | 1 | 63 | KDE 60S T-01001 | Organic Glass | 1 | 97 | KDE60ST-07300 | Welding Part of the Door (II) | 1 | 131 | KD E3 5S T-070 10 | Hinge (I) | 2 |
| 30 | KDE60ST-1000 | Exhaust Pipe Gasket (I) | 1 | 64 | GB/T 41-2000 | Nut M6 | 8 | 98 | KDE60ST-07300 | Welding Part of the Door (I) | 1 | 132 | KD E3 5S T-070 12 | Fixed Plate | 2 |
| 31 | KDE60ST-12100 | Muffler Welding Parts | 1 | 65 | KDE 60S T-01010 | Welding Part of Rear Cover Board | 1 | 99 | KDE60ST-07502 | Front Cover Board | 1 | 133 | KD E6 0S T-137 00 | Turbine Scroll Air Type Stallion Part | 1 |
| 32 | 450FZL-C6P35S4D | Aerofoil Fan | 1 | 66 | KDE 60S T-04100 | Welding Part of Front Upright Post | 1 | 100 | KDE307100TA3-13100H | Outlet Board Assembly 6th Socket | 1 | 134 | KR T-TU RB 0-24V | Turbine Scroll Air Control Module | 1 |
| 33 | KDE600ST-06150 | Rear Wall Cover Board Welding Parts | 2 | 67 | KDE 60S T-05200 | Welding Part of Front Upright Post | 1 | 101 | KDE12STA3-13300 | Outlet Board Assembly | 2 | | | | |
| 34 | KDE35ST-04001-M | Waterproof Cover | 16 | 68 | KFS 45 | Generator Assembly | 1 | 102 | KDE60ST-07510 | Welding Part of Joint Box | 1 | | | | |