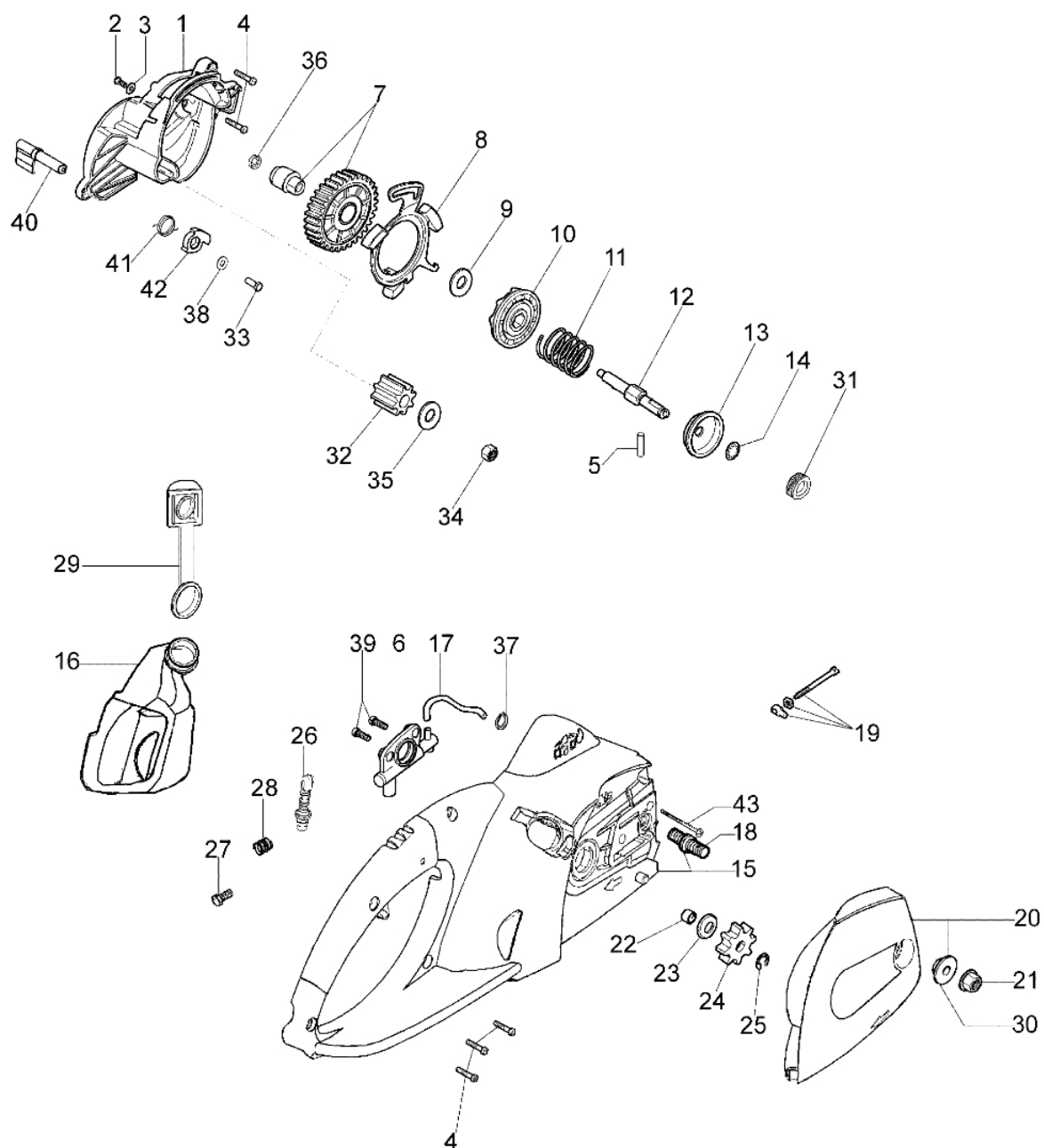
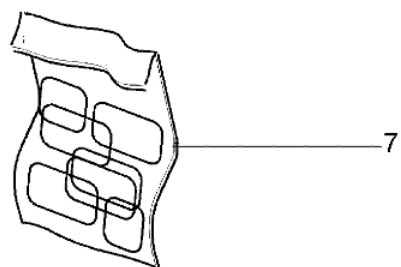
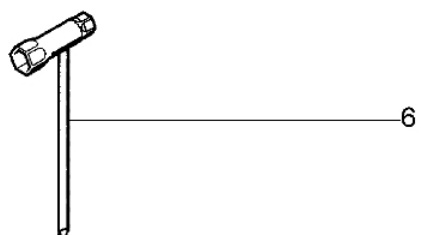
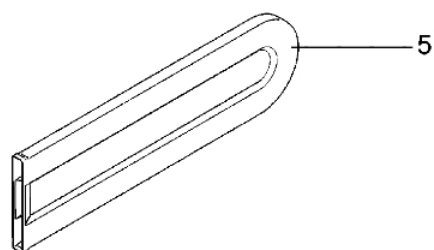
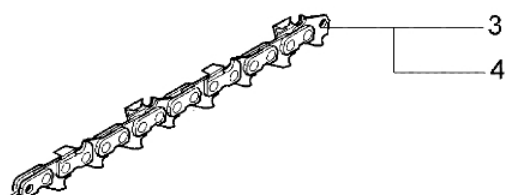
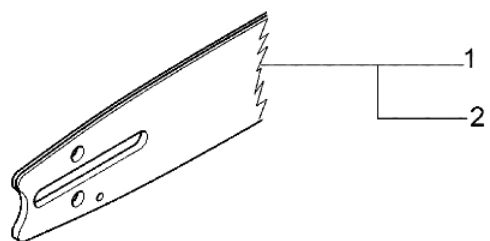


| Ref.Nu | Q.ty | Item number | Description | Technical bulletin |
|--------|------|-------------|---------------|--------------------|
| 1 | 15 | 3960057R | Screw | |
| 2 | 1 | 51020032R | Spring | |
| 3 | 1 | 51020052R | Guard | |
| 4 | 1 | 51020050R | Lever | |
| 5 | 1 | 3960084 | Screw | |
| 6 | 1 | 3918018 | Washer | |
| 7 | 1 | 51020001R | Motor housing | |
| 8 | 1 | 51020035R | Flange | |
| 9 | 1 | 3035038R | Bearing | |
| 10 | 1 | 51020011R | Rotor | |
| 11 | 1 | 51020015R | Fan | |
| 12 | 1 | 51020041R | Cable | |
| 13 | 1 | 51020048R | Stator | |
| 14 | 2 | 3960036 | Screw | |
| 15 | 1 | 51020104R | Compl. brush | |
| 16 | 1 | 51020051R | Throttle | |
| 17 | 2 | 51020037R | Cable | |
| 18 | 1 | 51020030R | Micro-switch | |
| 19 | 1 | 51020102R | Cable | |
| 20 | 1 | 51020125R | Condenser | |
| 21 | 1 | 51020045R | Clamp | |
| 22 | 1 | 011500076A | Grommet | |
| 23 | 1 | 51020042R | Cable | |
| 24 | 1 | 51020053R | Cover | |
| 25 | 1 | 2317027R | Switch | |
| 26 | 1 | 51020096R | Slide control | |
| 27 | 1 | 51020111R | Plate | |
| 28 | 2 | 3960109AR | Screw | |
| 29 | 1 | 51020044R | Cable | |
| 30 | 1 | 4198020R | Spring | |
| 31 | 1 | 51020034R | Lever | |
| 32 | 1 | 51010038R | Roller | |
| 33 | 1 | 51010034AR | Spring | |
| 34 | 1 | 51020033R | Throttle rod | |
| 35 | 1 | 51020132R | Support | |
| 36 | 1 | 51020130R | Spring | |
| 37 | 1 | 51020131R | Lever | |
| 38 | 1 | 3960059AR | Screw | |



| Ref.Nu | O.ty | Item number | Description | Technical bulletin |
|--------|------|-------------|-----------------|--------------------|
| 1 | 1 | 51020007R | Support | |
| 2 | 1 | 3801008 | Screw | |
| 3 | 1 | 3918010R | Washer | |
| 4 | 15 | 3960057R | Screw | |
| 5 | 2 | 3033019 | Roller | |
| 6 | 1 | 50050020R | Oil pump | |
| 7 | 1 | 51022014R | Compl. gear | BT4-095-06/09 |
| 8 | 1 | 51020023R | Flange | |
| 9 | 1 | 3064032 | Washer | |
| 10 | 1 | 51020014R | Shaft joint | |
| 11 | 1 | 51020013R | Spring | |
| 12 | 1 | 51020022AR | Shaft | BT4-095-06/09 |
| 13 | 1 | 51010004R | Washer | |
| 14 | 1 | 3868003R | Retainer washer | |
| 15 | 1 | 51020008R | Motor housing | |
| 16 | 1 | 51020036R | Tank | |
| 17 | 1 | 51020017R | Hose | |
| 18 | 1 | 51010016 | Stud | |
| 19 | 1 | 011500462 | Chain tensioner | |
| 20 | 1 | 51020029R | Chain cover | |
| 21 | 1 | 50010148R | Nut | |
| 22 | 1 | 3035230 | Bearing | |
| 23 | 1 | 51020077R | Washer | |
| 24 | 1 | 51020100R | Sprocket | |
| 25 | 1 | 3026013 | Ring | |
| 26 | 1 | 51020016R | Hose | |
| 27 | 1 | 50170149R | Oil filter | |
| 28 | 1 | 51020113R | Spring | |
| 29 | 1 | 51020026R | Cap | |
| 30 | 1 | 51010040 | Insert | |
| 31 | 1 | 51020078R | Worm gear | |
| 32 | 1 | 51020021R | Sprocket | |
| 33 | 1 | 320000004 | Screw | |
| 34 | 1 | 018100045 | Nut | |
| 35 | 2 | 3064035 | Washer | |
| 36 | 1 | 3868003R | Retainer washer | |
| 37 | 1 | 3024005R | Snap ring | |
| 38 | 1 | 3916022R | Washer | |
| 39 | 1 | 3960059AR | Screw | |
| 40 | 1 | 51020090R | Lever | |
| 41 | 1 | 51020092R | Spring | |
| 42 | 1 | 51020091R | Lever | |
| 43 | 2 | 3960014 | Screw | |



| Ref.Nu | Q.ty | Item number | Description | Technical bulletin |
|--------|------|-------------|--------------------------------------|--------------------|
| 1 | 1 | 093000536R | Bar 14" - cm 35 | |
| 2 | 1 | 50052019 | Bar 16" - cm 41 | |
| 3 | 1 | 51010103R | Chain .3/8 x .050 (1.3mm) - 50 links | |
| 4 | 1 | 50050093R | Chain .3/8 x .050 (1.3mm) - 57 links | |
| 5 | 1 | 1144038 | Bar cover - 35 cm | |
| 6 | 1 | 2304073 | Wrench 13x19 | |
| 7 | 1 | 51022012 | Labels set | |