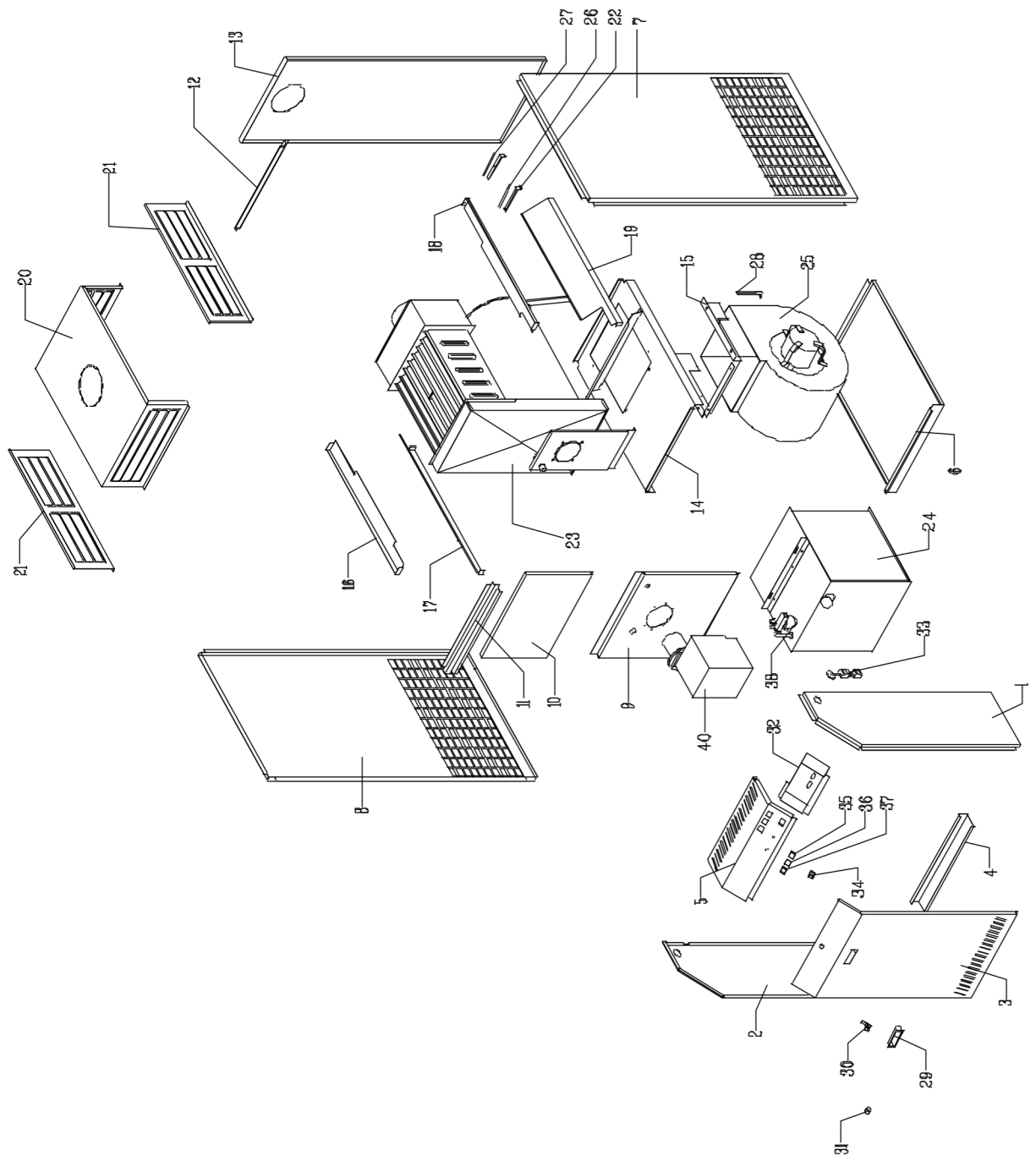


MODEL BF 35



**MODEL BF 35**

<b>Pos.</b>	<b>Code NR</b>	<b>Description</b>	<b>Q<sup>^</sup>ty</b>
1	S/R	CASING RIGHT SIDE PANEL	1
2	S/R	CASING LEFT SIDE PANEL	1
3	S/R	CASING DOOR PANEL	1
4	S/R	CASING UNDERNEATH GIRDER	1
5	S/R	CONTROL PANEL	1
6	S/R	BOTTOM PANEL	1
7	S/R	RIGHT SIDE PANEL	1
8	S/R	LEFT SIDE PANEL	1
9	4034.001	BURNER PANEL	1
10	S/R	FRONT SUPERIOR PANEL	1
11	S/R	FRONT SUPERIOR GIRDER	1
12	S/R	REAR SUPERIOR GIRDER	1
13	S/R	REAR PANEL	1
14	S/R	FAN BAFFLE	1
15	4034.003	FAN SUPPORT FRAME	1
16	4034.005	SUPERIOR LEFT DEFLECTOR	1
17	4034.007	BOTTOM LEFT DEFLECTOR	1
18	4034.009	SUPERIOR RIGHT DEFLECTOR	1
19	4034.011	BOTTOM RIGHT DEFLECTOR	1
20	4034.013	PLENUM	1
21	4034.015	PLENUM SIDE FIN	2
22	4034.017	THERMOSTAT BULB HOLDER	2
23	S/R	HEAT EXCHANGER	1
24	4034.018	TANK	1
25	4034.020	MOTOR FAN DD 9-9	1
26	4034.022	THERMOSTAT LS/1	1
27	4034.023	THERMOSTAT TR/2 40°	1
28	4034.024	THERMOSTAT TR/2 (ROOM THERM.)	1
29	4034.025	BUILT-IN HANDLE	1
30	4034.026	TRIANGLE BOX LOCK	1
31	4034.027	TRIANGLE GLASS-FILLED NYLON BOX KEY	1
32	4034.028	SWITCH BOARD	1
33	4034.029	3-POLE CONNECTOR	1
34	4034.030	COMMUTATOR	1
35	4034.031	ELECTRICAL LAMP SIGNAL -GREEN	1
36	4034.032	ELECTRICAL LAMP SIGNAL -RED	1
37	4034.033	ELECTRICAL LAMP SIGNAL -ORANGE	1
38	4034.034	OIL FILTER	1
40	4034.035	OIL BURNER RIELLO REG 3	1

S/R – parts on special request only