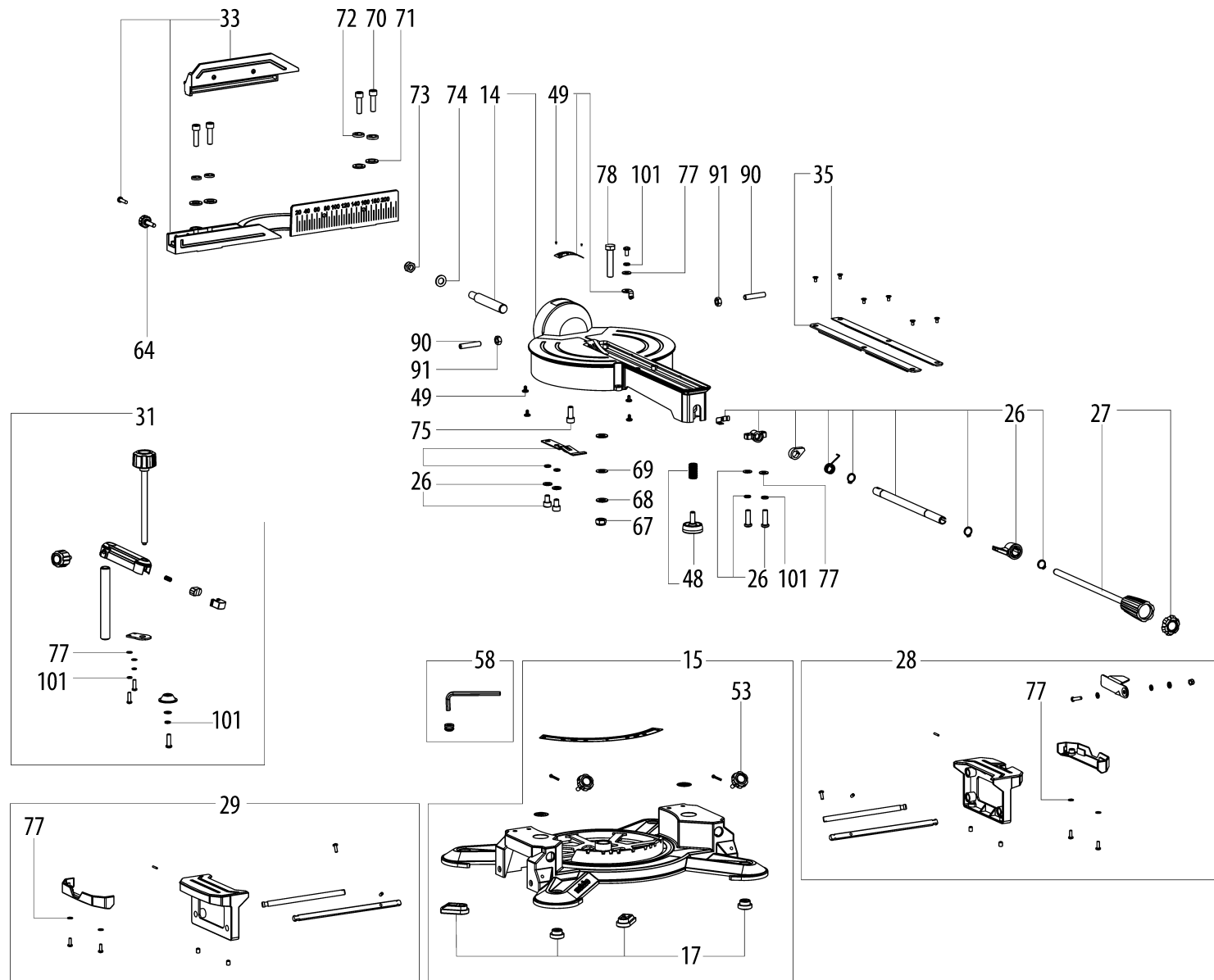


	Litzenfarben	Color of strands	Couleur des cordons
BK	Schwarz	Black	Noir
WH	Weiß	White	Blanc
BU	Blau	Blue	Bleu
YE	Gelb	Yellow	Jaune
RD	Rot	Red	Rouge
TR	Transparent	Transparent	Transparent
BN	Braun	Brown	Brun
GY	Grau	Grey	Gris
GNYE	Grün-gelb	Green-yellow	Vert-jaune
BKWH	Schwarz-weiss	Black-white	Noir-blanc
GN	Grün	Green	Vert
OG	Orange	Orange	Orange
VT	Violett	Violet	Violet
TQ	Türkis	turquoise	Turquoise

	Bedeutung der Kurzzeichen	Meaning of the symbols	Interprétation des symboles
B	Stecker	Plug	Fiche
C	Kondensator	Condenser	Condensateur
D	Funkentstördrossel	Interference suppression inductance	Inductance d'antiparasitage
E	Elektronik-Baustein	Electronic unit	Unité électronique
I	Induktionsspule	Induction coil	Bobine d'inductance
K	Klemme	Terminal	Borne
L	Licht	Light	Lumière
M	Motor	Motor	Moteur
O	Überlastschutz	Overload cut-out	Déclencheur de surintensité
R	Drehrichtungs-umschalter	Reversing switch	Commutateur droite-gauche
S	Schalter	Switch	Interrupteur
U	Umschalter	Change-over switch	Commutateur
X	Elektronik-Element	Electronic element	Élément électronique



Position	Amount	Type number	Description	PG
1	1	316092320	Carbon brush holder compl.	17
2	1	343435820	Motor cover	15
3	1	316060640	Flange compl.	22
4	1	316092330	Carbon brush set	17
5	1	343436090	LED-Lamp	20
6	1	343436110	Cover lighting	11
7	1	310011450	Stator	39
8	1	310011500	ARMATURE	41
9	1	316060710	Gear-box compl.	29
10	1	343254900	Condenser	11
11	1	316060720	Switch set	15
12	1	316056690	Switch compl.	21
13	1	343440900	Power supply	24
14	1	316055970	Turntable compl.	40
15	1	316055940	Table compl.	44
16	1	316056330	Safety guard compl.	26
17	1	315419090	Foot compl.	13
18	1	316060860	stress relieve compl.	23
19	1	316056250	Wheel guard compl.	39
20	1	316056730	Release lever compl.	14
21	1	316056930	SWIVEL LEVER compl.	25
22	1	343435740	Handle cpl.	25
23	1	316056090	Motor bracket compl.	30
24	1	316056120	Pivot compl.	46
25	1	316060950	Handle compl.	23
26	1	316092340	Detent compl.	22
27	1	316056800	Control grip compl.	19
28	1	315418530	Table side extension right	27
29	1	315418500	Table side extension left	27
30	1	316056290	Motor housing compl.	29
31	1	316056680	Workpiece holder compl.	25
32	1	316056760	Clamping lever compl.	16
33	1	316056010	Stop compl.	33
34	1	315418550	Rear pivot compl.	36
35	1	343436030	Table insert	15
36	1	343436070	Laser with holder	22
37	1	316056340	Dust etraction kit compl.	18
38	1	343435800	Cover dust collector	16
39	1	343436280	Extraction funnel	11
40	1	343436170	CABLE BRACKET	11
41	1	316056890	Spindle lock compl.	15

Position	Amount	Type number	Description	PG
42	1	316061380	Transport lock compl.	12
43	1	316057470	Depth stop compl.	12
44	1	316061420	tipping axis compl.	26
45	1	343441110	Cover (cable channel)	11
46	1	344113030	Plug in buffer	11
47	1	339136700	cover pivot	11
48	1	316056830	Set screw compl.	11
49	1	316061450	Scale set compl.	15
50	1	316061500	Motor compl.	53
51	1	339147660	Sliding sheet	13
52	1	316061530	End stop cpl.	15
53	1	343436220	Star grip screw	11
54	1	316061540	Bearing compl.	14
55	1	341722210	Stop screw	11
57	1	344113050	Rubber bushing	11
58	1	316061550	Tool holder col.	11
61	1	338063100	Rating plate	11
62	1	343437020	Star grip screw	11
63	1	343084080	Electronic unit	29
64	1	343437050	Star grip screw	11
65	1	143111440	Ball bearing, 12x28x8	27
66	1	143115730	Ball bearing	14
67	1	141132030	Hex nut	11
68	1	141150050	Washer	11
69	1	141150390	Lock washer	11
70	1	141113890	Cap screw	12
71	1	141150130	Washer	11
72	1	141155240	Lock washer	12
73	1	141130890	Hexagonal lock nut	12
74	1	141156200	Washer	11
75	1	141113840	Cap screw	12
76	1	141110590	Fillister head screw	11
77	1	141150010	Washer	11
78	1	141113440	Hexagon head screw	12
79	1	141112180	Countersunk screw	11
80	1	141116780	Fillister head screw	11
81	1	141123710	Fillister head screw	11
82	1	141150020	Washer	11
83	1	141123840	Countersunk screw	11
84	1	141124510	HEX. SOCKET SET SCREW, FLAT PT M 6X8 VER	11
87	1	141150360	Lock washer	11

88	1	141110540	Fillister head screw	11
89	1	141130130	Hexagonal nut	12
90	1	141124460	HEX. SOCKET SET SCREW, FLAT PT	11
91	1	141131010	Hexagonal nut	11
92	1	141123410	Grub screw	11
93	1	141116480	Grub screw	11
94	1	141113590	Cap screw	12
95	1	141124470	CROSS REC'D PAN HEAD TAP.SCREW ST 4,2X9,	11
96	1	141111430	Fillister head screw	12
97	1	141118730	Self-tap. fill. h. screw	11
98	1	141116800	Self-tap. fill. h. screw	11
99	1	141123940	Self-tap. fill. h. screw	11
100	1	141113220	Fillister head screw	11
101	1	141150350	Lock washer	11
1001	1	338505980	Wiring diagram	

