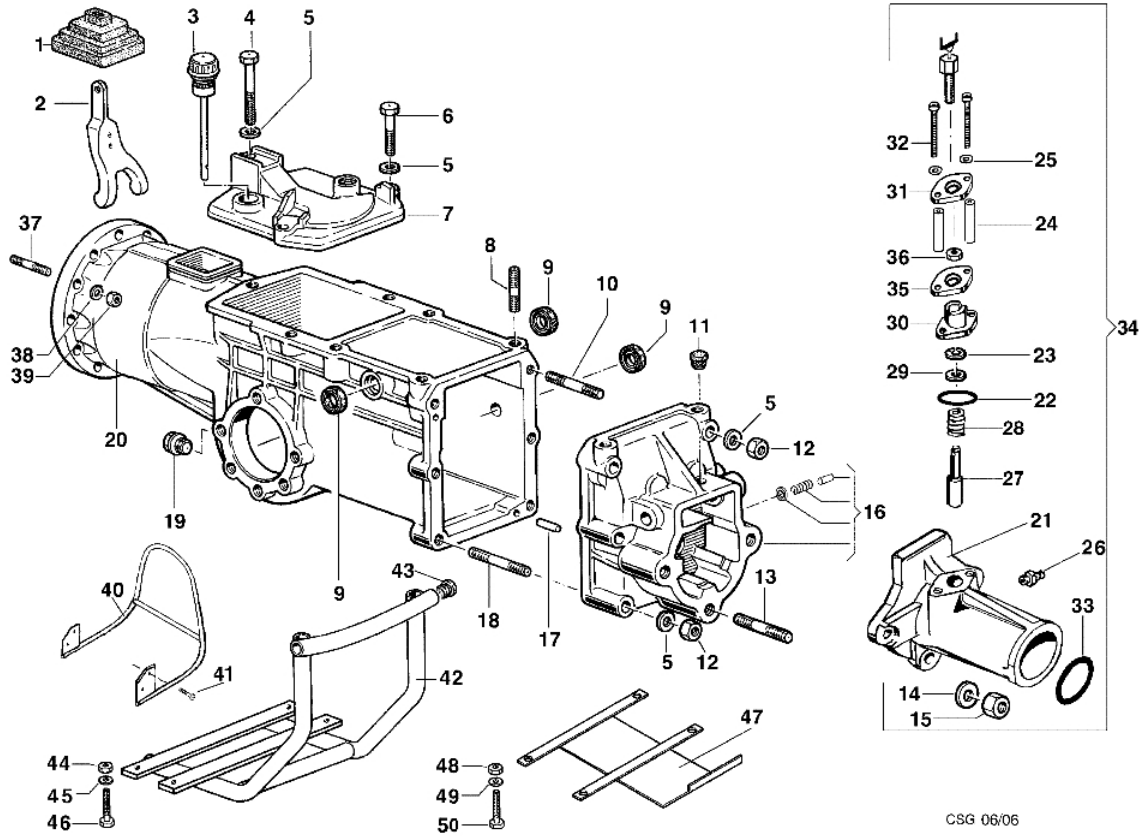
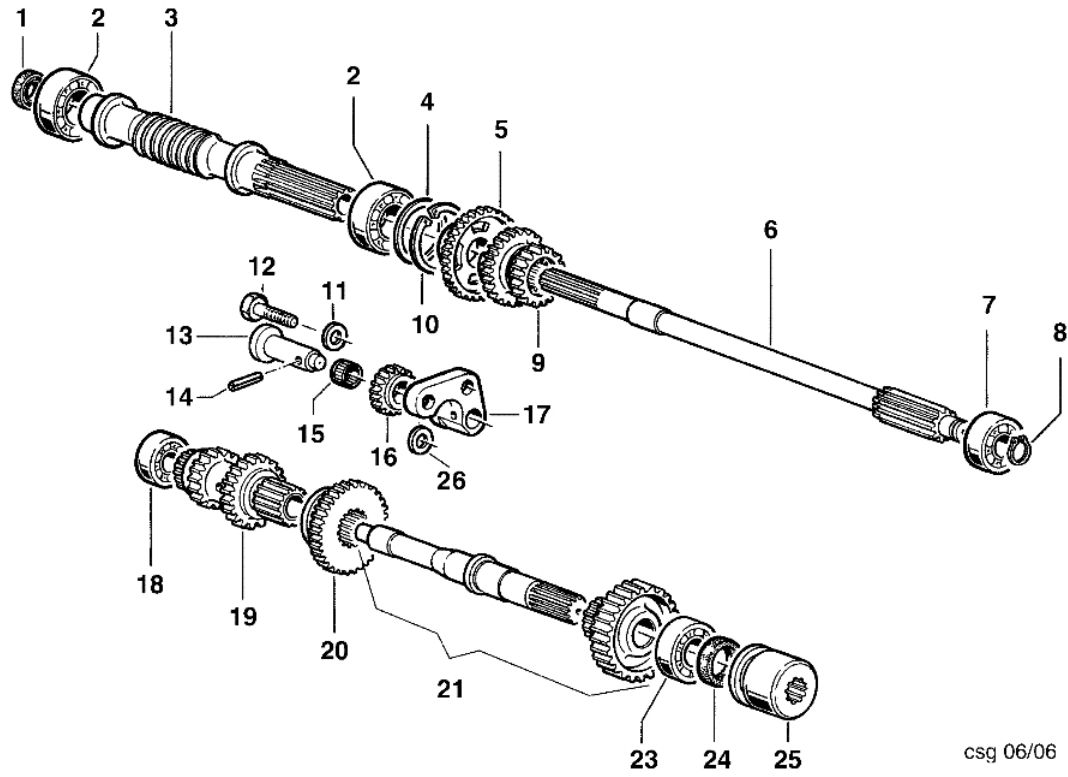

CODICE

Caratteristiche tecniche	120.0003	120.0004	120.0016	120.0032	120.0006	109.0002	120.0026	120.0035
Tipo di frizione	Conica	Conica	Conica	Conica	Dischi	Dischi	Conica	Dischi
Tipo albero	Conico	Conico	Cilindrico	Cilindrico	Cilindrico	Conico	Cilindrico	Cilindrico
Diametro albero	23	23	19.05*	20**	25.4***	23	19.05	25.4
Vite di fissaggio all'albero motore	TCEI M8X25	TCEI M8X50	5/16"-24 UNF	TCEI M8X20	7/16"-20 UNF	TCEI M8X25	3/8"x1"-24 UNF	3/8"-24 UNF

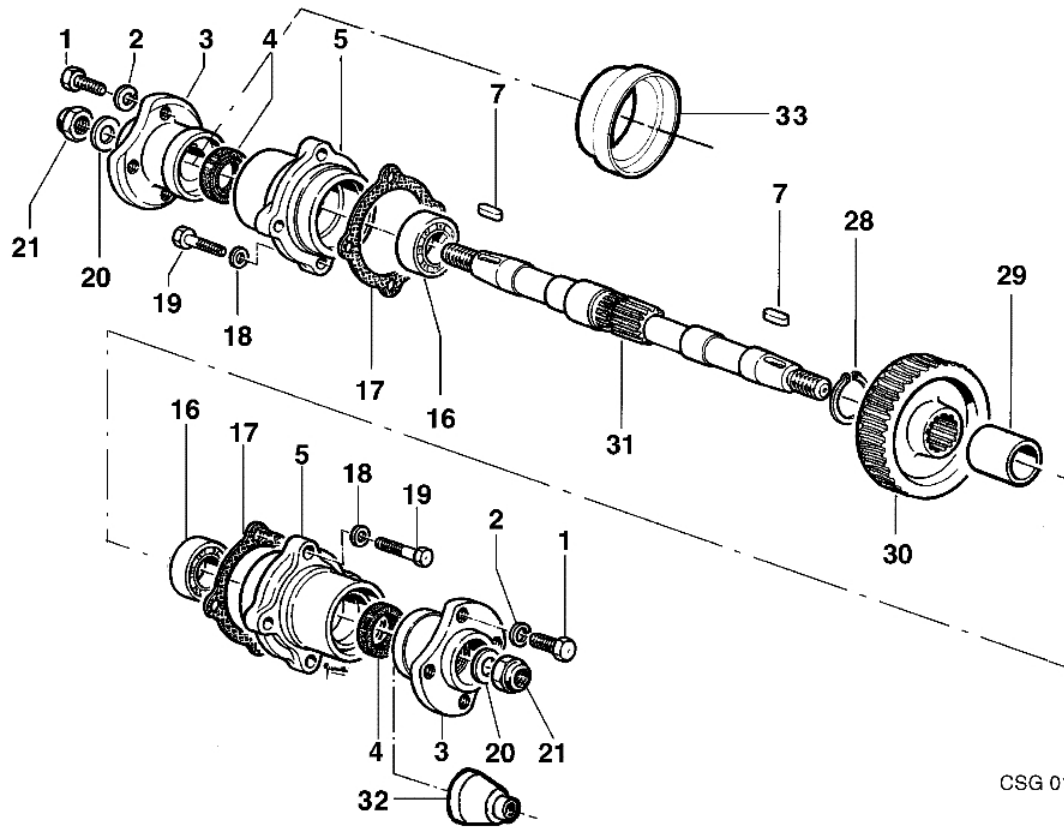
Ref.	Q.ty	Item number	Description	Validity from	Validity till	Notes	Bulletin
1	1	F1200003	Clutch			IM359-A349; 15LD315/225; Yanmar L48-L70; Robyn EY2	
1	1	F1200004	Clutch			A230	
1	1	F1200026	Clutch			Robyn EY20 tipo Q	
1	1	YF1200016	Clutch			Honda GX160; B&S-Vanguard 6; Robyn BT6-001-09/09 EX17; Kohler CS	
1	1	YF1200032	Clutch			Honda G200S	
2	1	F1090002	Multiple disk clutch			ACT280/340; 15LD350	
2	1	F1200006	Multiple disk clutch			Honda GX270;Kohler CS8.5; B&S-Vanguard 13	
2	1	F1200035	Multiple disk clutch			Honda GX340	
2	1	68320006R	Clutch			Honda GX160; B&S-Vanguard 6; Robyn BT6-001-09/09 EX17; Kohler CS	
3	1	F1050027	Flange			Honda GX160; B&S-Vanguard 6; Robyn EX17; Honda CS6	
3	1	F1250004	Flange			Robyn EY20	
4	1	N3812500	Stud			Honda GX160; B&S-Vanguard 6; Robyn EX17;Kohler CS6	
4	1	N3815300	Stud			Robyn EY20; Kohler CS8.5; Honda GX340	
5	1	YN4365400	Washer			Honda GX160; B&S-Vanguard 6; Robyn EX17; Kohler CS	
6	1	320000028	Nut			Honda GX160; B&S-Vanguard 6; Robyn EX17; Kohler CS	
7	1	F1050031	Flange			Honda GX270; KohlerGS8.5; B&S-Vanguard 13; Honda G	
8	1	YN6243950	Screw			Robyn EY20	
8	1	YN6243980	Screw			Honda GX160; B&S-Vanguard 6; Robyn EX17; Kohler CS	
8	1	YN6262200	Screw			Honda G200s	
9	1	YN4376400	Washer			Honda GX270; Kohler CS8.5; B&S-Vanguard 13; Honda	
10	1	N6309790	Screw			Honda GX270; Kohler CS8.5; B&S-Vanguard 13; Honda	
11	1	F1050028	Spacer			Honda GX160; B&S-Vanguard 6; Robyn BT6-001-09/09 EX17; Kohler CS	
11	1	F1050036	Spacer			Honda GX270; Kohler CS8.5 B&S-Vanguard 13; vecchia	
12	1	N0646470	Key			Honda G200S	
12	1	N0648080	Key			Honda GX270; Kohler CS8.5; B&S-Vanguard 13; frizio	
12	1	N0648090	Key			Honda GX270; Kohler CS8.5; B&S-Vanguard 13; Honda	
12	1	YN0643410	Key			Honda GX160; B&S-Vanguard 6; Robyn EX17; Kohler CS	
13	1	F1210001	Spacer			A230	
14	1	F1210002	Spacer			A230	
15	1	K8236004	Stud			A230	
15	1	N3815300	Stud			Motore senza distanziale; engine without spacer	
16	1	F0750011	Lever				
17	1	N5002870	Washer			Honda GX160; B&S-Vanguard 6; Robyn EX17; Kohler CS	
18	1	P1200020	Spacer unit			A230	



Ref.	O.ty	Item number	Description	Validity from	Validity till	Notes	Bulletin
1	1	F0751646	Bellows				
2	1	F0750011	Lever				
3	1	F1290819	Cap				
4	1	N6294400	Screw				
5	1	YN4365400	Washer				
6	1	3806074R	Screw				
7	1	F1290802	Upper cover				
8	1	N3812500	Stud				
9	1	YN0203000	Ring				
10	1	N3825400	Stud				
11	1	F0750835	Cap				
12	1	N1458800	Nut				
13	1	N3861500	Stud				
14	1	YN4387700	Washer				
15	1	N1470500	Nut				
16	1	YF1290817	Set cover				
17	1	YN5124300	Pin				
18	1	N3825750	Stud				
19	1	YN5254000	Oil cap				
20	1	F1290801	Speed-change gear box				
21	1	F1054740	Flange				
22	1	N0317600	O-ring				
23	1	3024012	Ring				
24	1	F1301618	Special screw				
25	1	YN4358110	Washer				
26	1	N2605600	Nipple				
27	1	F1301616	Shutter				
28	1	N3118700	Spring				
29	1	YN4384410	Washer				
30	1	F1301617	Slide				
31	1	F1301619	Plate				
32	1	N6243100	Screw				
33	1	K7035045	O-ring				
34	1	P0001796	quickfit				
35	1	F1294701	Plate				
36	1	YN1454200	Nut				
37	1	N3815300	Stud				
38	1	YN4365400	Washer				
39	1	320000028	Nut				
40	1	F1202102	Protective guard			IM359-A349	
41	1	3806063	Screw			IM359-A349	
42	1	F1221619	Guard			B&S-Vanguard 6	
42	1	F1272111	Guard			B&S-Vanguard 13	
43	1	N5267400				B&S-Vanguard 6; B&S-Vanguard 13	
44	1	320000028	Nut			B&S-Vanguard 6	
44	1	006000091	Nut			B&S-Vanguard 13	
45	1	YN4365400	Washer			B&S-Vanguard 6	
45	1	YN4376400	Washer			B&S-Vanguard 13	
46	1	3806074R	Screw			B&S-Vanguard 6	
46	1	YN6335900	Screw			B&S-Vanguard 13	
47	1	F1052122	Guard			A230	
47	1	F1052126	Guard			Honda GX160; Honda G200S; Robyn EX17; Robyn EY20 t	
47	1	F1092104	Protective guard			Honda GX270; Kohler CS8.5; Honda GX340	
47	1	F1200002	Protective guard			15LD315/350	
47	1	F1212115	Protective guard			ACT280/340	
47	1	F1250002	Protective guard			15LD225; Yanmar L48	
47	1	F1302151	Protective guard			Yanmar L70	
48	1	320000028	Nut			Honda GX160; Honda G200S; Robyn EX17; Robyn EY20 t	
48	1	006000091				15LD225; Yanmar L48; Honda GX270; Kohler CS8.5; Ho	
49	1	YN4365400	Washer			Honda GX160; Honda G200S; Robyn EX17; Robyn EY20 t	
49	1	YN4376400	Washer			15LD225; Yanmar L48; Honda GX270; Kohler CS8.5; Ho	
50	1	3806074R	Screw			Honda GX160; Honda G200S; Robyn EX17; Robyn EY20 t	
50	1	3806063	Screw			A230	
50	1	YN6335900	Screw			15LD225; Yanmar L48; Honda GX270; Kohler CS8.5; Ho	
50	1	YN6332800	Screw			Kohler CS8.5; Honda GX340	

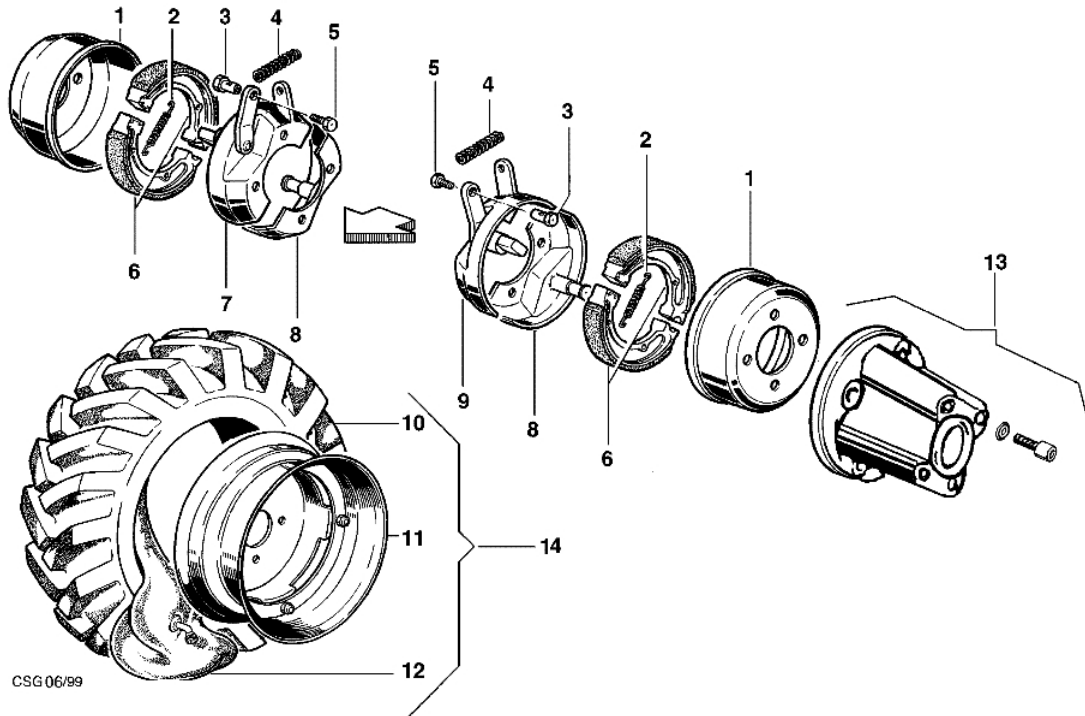


Ref.	O.ty	Item number	Description	Validity from	Validity till	Notes	Bulletin
1	1	N0204750	Gasket				
2	1	N1270751	Bearing				
3	1	F1300800	Screw				
4	1	N5010200	Washer				
5	1	F1290812	Idler gear				
6	1	F1290811	Shaft				
7	1	N1257700	Bearing				
8	1	YN0110500	Seeger				
9	1	F1290813	Gear				
10	1	N0136900	Seeger				
11	1	N4376300	Washer				
12	1	N6330100	Screw				
13	1	F1290803	Pin				
14	1	N5115000	Pin				
15	1	3037006	Roller cage				
16	1	F1290804	Idler gear				
17	1	F1290807	Support				
18	1	N1251500	Bearing				
19	1	F1290810	Gear				
20	1	F1290805	Gear				
21	1	R1290814	Compl. shaft				
23	1	YN1263700	Bearing				
24	1	N0207300	Ring				
25	1	F1290816	Sleeve				
26	1	N5001900	Washer				

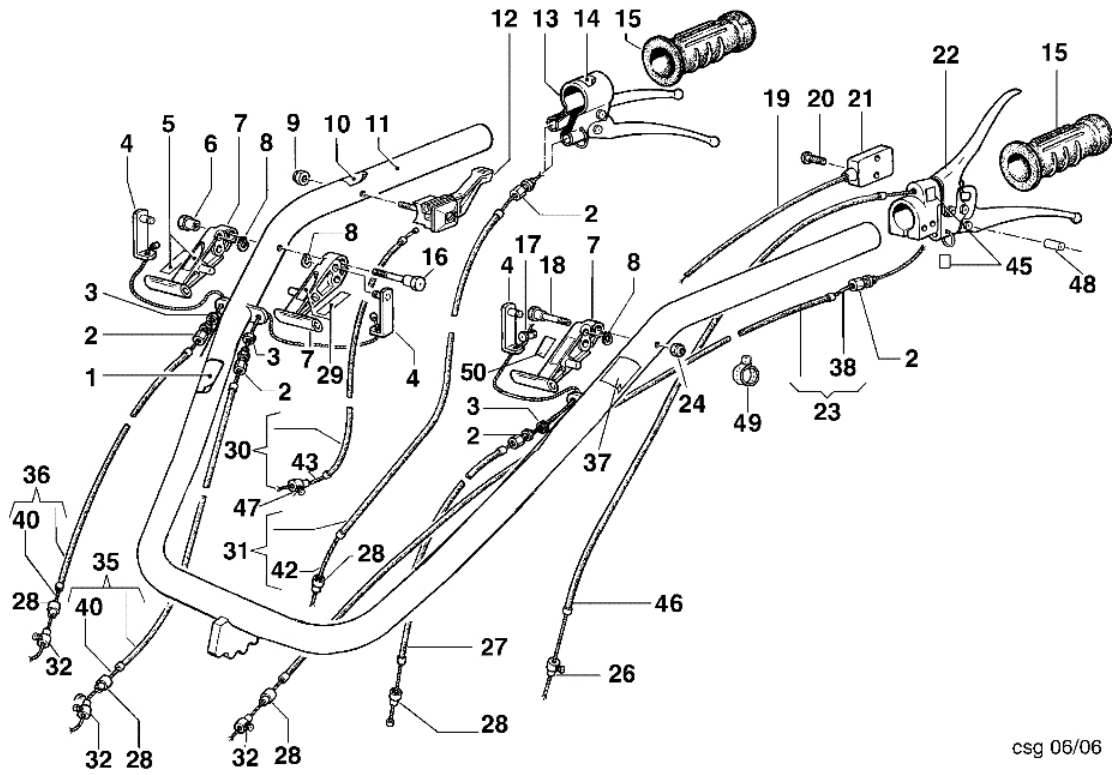


CSG 01/01

Ref.	O.ty	Item number	Description	Validity from	Validity till	Notes	Bulletin
1	1	N6322000	Screw				
2	1	3819014	Grower				
3	1	F1290211	Wheel hub				
4	1	YN0209720	Ring				
5	1	F1290209	Support				
7	1	YN0646800	Key				
16	1	N1272500	Bearing				
17	1	F1050202	Gasket				
18	1	YN4365400	Washer				
19	1	YN6267000	Screw				
20	1	N4403000	Grower				
21	1	YN1479800	Nut				
28	1	N0124150	Seeger				
29	1	F1290216	Spacer				
30	1	F1300201	Wheel				
31	1	F1290214	Shaft				
32		-	Not available for this product				
33	1	F1290227	Guard				

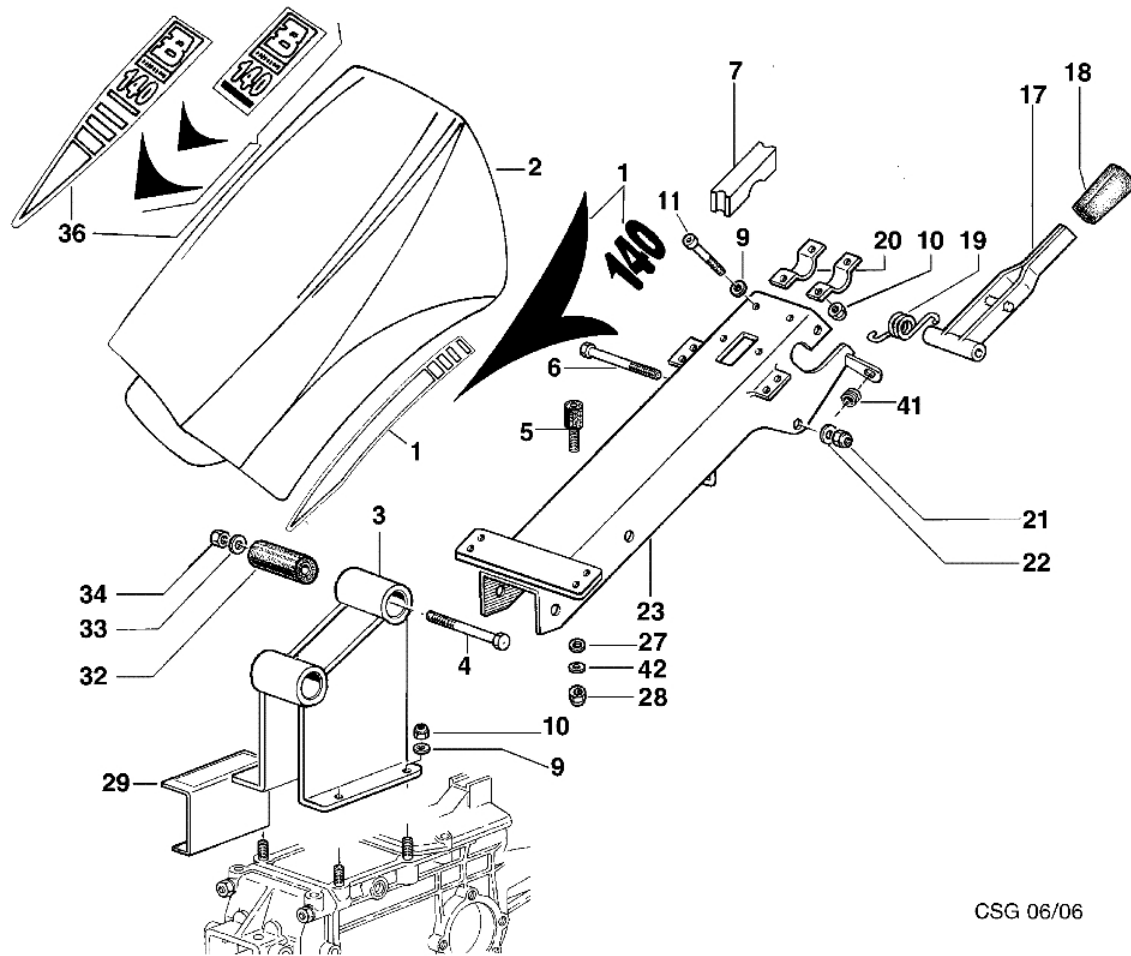


Ref.	O.ty	Item number	Description	Validity from	Validity till	Notes	Bulletin
1	1	N2382700	Cable reel				
2	1	YN3105100	Spring				
3	1	YF1290225	Clamp				
4	1	N3101050	Spring				
5	1	YN6199800	Screw				
6	1	YN2362700	Brake shoe				
7	1	F1290223	Half-cable reel				
8	1	F1290220	Half-cable reel				
9	1	F1290224	Half-cable reel				
10	1	N4851600	Tire			4.00-8	
10	1	N4851890	Tire			6.00-6	
10	1	N4852000	Tire			4.00-10	
10	1	N4853500	Tire			5.00-10	
11	1	N4900500	Rim			6.00-6	
11	1	N4900820	Rim			4.00-8	
11	1	N4901590	Rim			4.00/5.00-10	
12	1	N4881100	Inner tube			4.00-8	
12	1	N4881300	Inner tube			6.00-6	
12	1	N4881500	Inner tube			4.00-10	
12	1	YN4882500	Inner tube			5.00-10	
13	1	L0671613	Spacer				
14	1	P0000559	Wheel kit			400x8	
14	1	P0000605	Wheel kit			400x10	
14	1	P0000860	Wheel kit			500x10	
14	1	P0001626	Wheel kit			600x6	



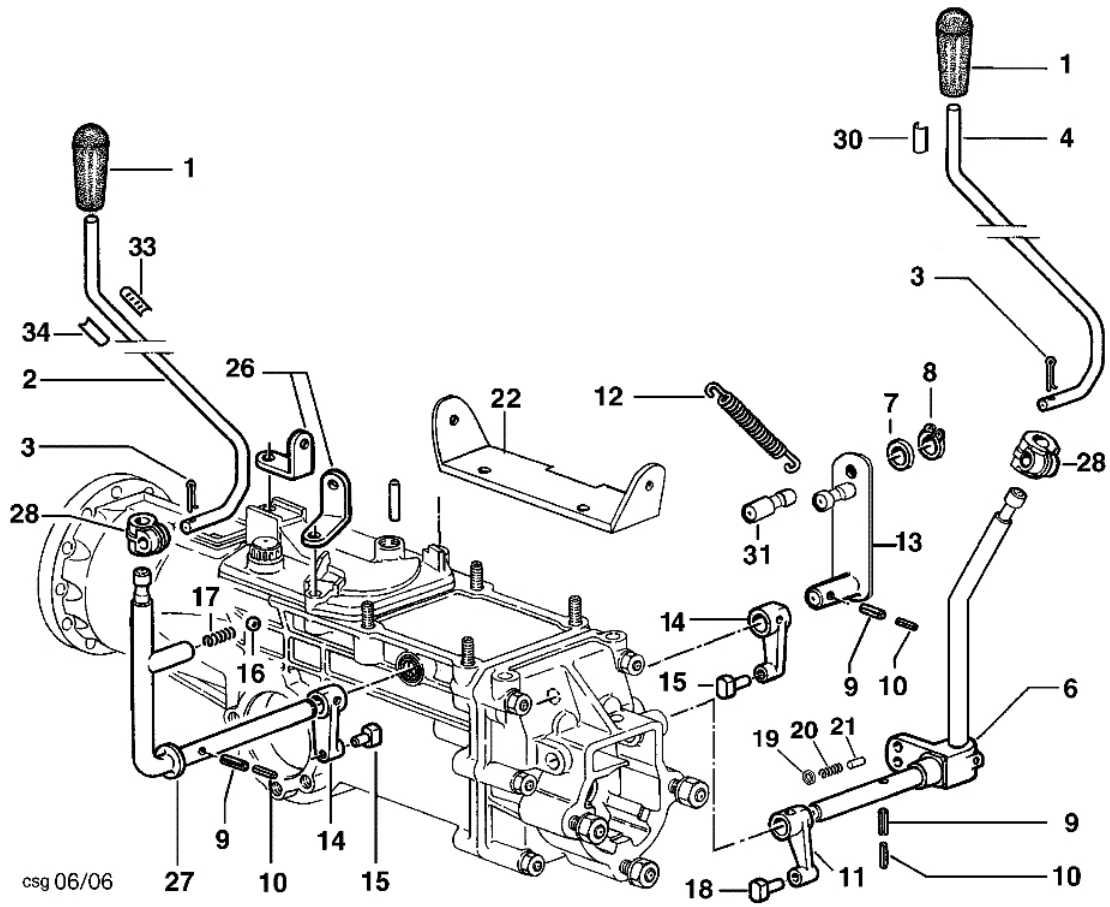
csg 06/06

Ref.	O.ty	Item number	Description	Validity from	Validity till	Notes	Bulletin
1	1	YN5380870	Mark (Instruction)				
2	1	YN5801000	Adjuster assy				
3	1	3911008	Nut				
4	1	F1291619	Frame				
5		-	Not available for this product				
6	1	3914010	Nut				
7	1	F1291614	Lever				
8	1	N1734000	Ring				
9	1	3914006R	Nut				
10	1	YN5380805	Mark (Accelerator)				
11	1	F1301607	Handle kit				
12	1	YN2803650	Throttle				
13	1	N2806200	Handle				
14	1	YN5380665	Mark (brake)				
15	1	YN2847300	Knob				
16	1	F1291615	Pin				
17	1	N5901500	Clamp				
18	1	F1291615	Pin				
19	1	F1300006	Cable	07/2005		Motori benzina; Gasoline engines; (G200S; 15LD225;	
20	1	N6182150	Screw			Motori benzina; Gasoline engines; (G200S; 15LD225;	
21	1	N2542360	Switch			Motori benzina; Gasoline engines; (G200S; 15LD225;	
22	1	N2806110	Handle				
23	1	YN5484900	Transmission				
24	1	3914010	Nut				
26	1	YN5901000	Clamp			Motori diesel; Diesel engines; (15LD315; 15LD350;	
27	1	F1301625	Transmission			Per Quick-fit; For Quick-fit	
28	1	YN5852100	Clamp				
29	1	F1301623	Plate				
30	1	N5455950	Transmission			A349; IM359; IM300	
30	1	N5460150	Transmission			15LD315; 15LD350; G200S; 15LD225; Robyn EY20; Roby	
30	1	N5464000	Transmission			Honda GX270; Vanguard 13; Kohler CS8.5; Honda GX34	
30	1	YN5458350	Transmission			A230; ACT280; ACT340	
30	1	YN5462705	Transmission			Vanguard 6	
31	1	YN5485750	Clutch cable				
32	1	YN5901600	Clamp				
35	1	N5482300	Transmission				
36		-	Not available for this product				
37	1	F1301626	Mark (Quick connection)				
38	1	N5632040	Rope				
40	1	N5629950	Rope				
42	1	N5633800	Rope				
43	1	N5605400	Rope			A349; IM359; IM300	
43	1	N5609000	Rope			15LD315; 15LD350; G200S; 15LD225; Robyn EY20; Roby	
43	1	N5614500	Rope			Honda GX270; Vanguard 13; Kohler CS8.5; Honda GX34	
43	1	YN5611250	Rope			Vanguard 6	
45	1	YN5380660	Mark (Clutch)				
46	1	N5472700	Transmission			Motori diesel; Diesel engines; (15LD315; 15LD350;	
47	1	F1300004	Clamp			Honda GX270; Vanguard 13; Honda GX340; Honda CS8.5	
48	1	F0751693	Fairled				
49	1	YN1764000	Band				
50	1	N5909000	Grip-end				



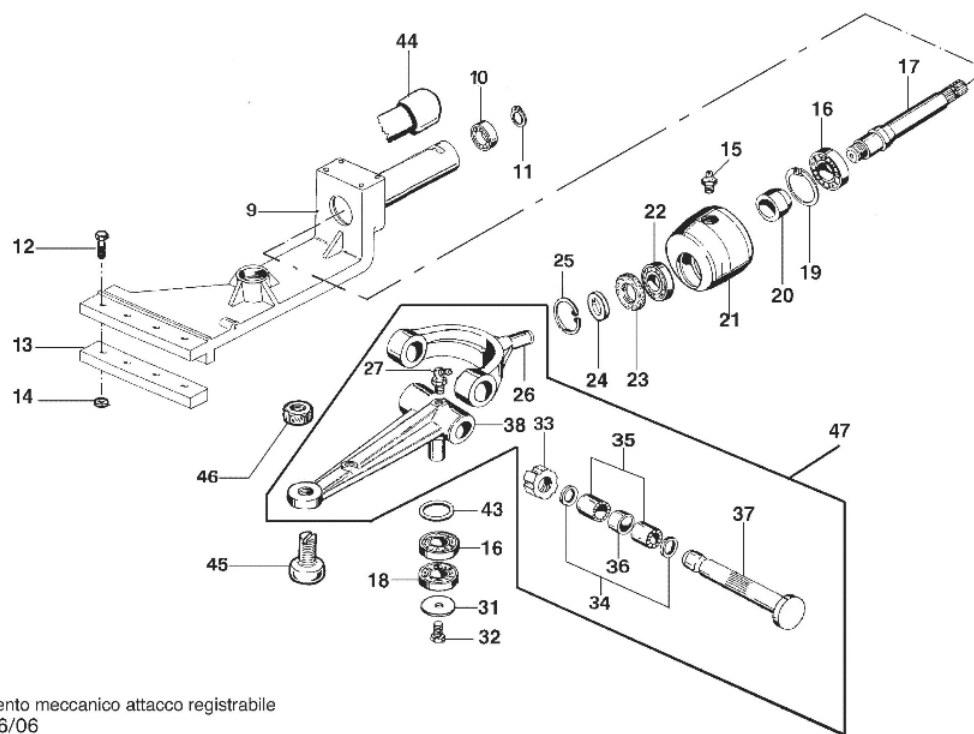
CSG 06/06

Ref.	O. ty	Item number	Description	Validity from	Validity till	Notes	Bulletin
1	1	F1302134	Mark	04/2004		SX; LEFT	
1	2	F1302135	Mark	04/2004		DX; RIGHT	
2	1	F1302104	Hood				
3	1	P0001777	Column support (Set)				
3	1	P0001973	Column support (Set)				
4	1	N6407550	Screw				
5	1	F0752159	Silent block				
6	1	YN6361500	Screw				
7	1	F1181646	Support				
9	1	3916008R	Washer				
10	1	N1458800	Nut				
11	1	N6289250	Screw				
17	1	YF1291636	Lever				
18	1	YN2840480	Knob				
19	1	YF1291634	Spring				
20	1	YF1151601	Clamp				
21	1	YN1464200	Nut				
22	1	3916010	Washer				
23	1	F1301613	Steering arm				
27	1	3916008R	Washer				
28	1	320000028	Nut				
29	1	F1291627	Selector swieth				
32	1	N4924300	Silent block				
33	1	N4384360	Washer				
34	1	N1470500	Nut				
36	1	F1302130	Mark	04/2004			
41	1	N0402900	Grommet				
42	1	YN4365400	Washer				



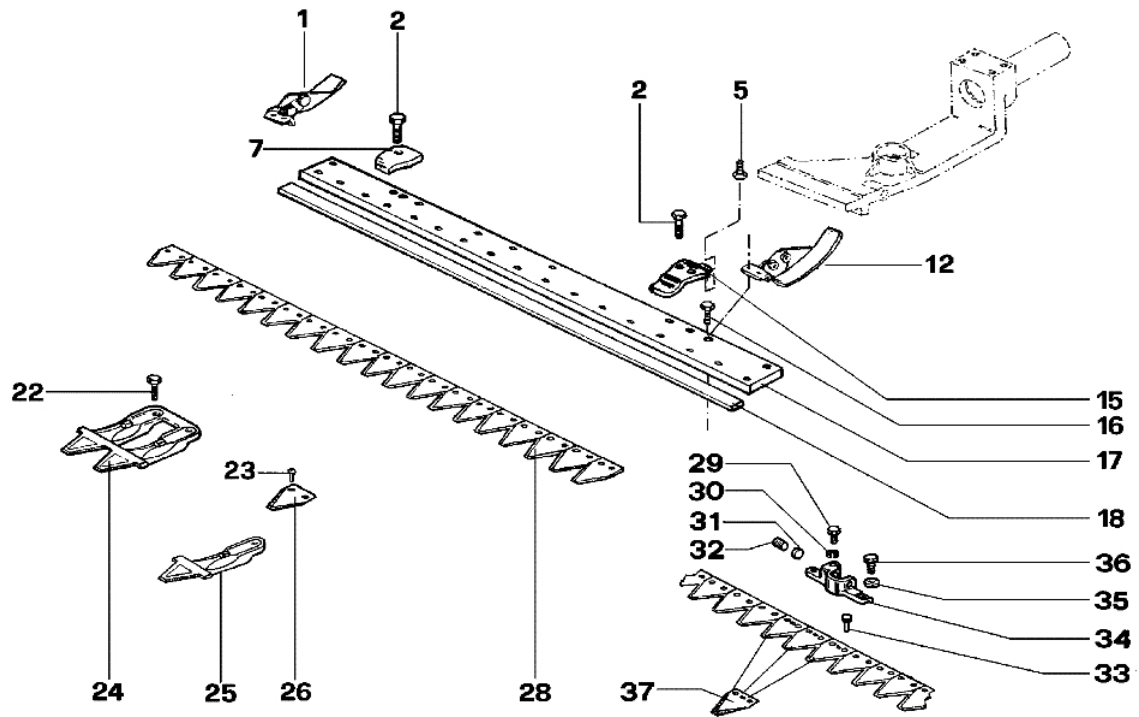
Ref.	O.ty	Item number	Description	Validity from	Validity till	Notes	Bulletin
1	1	YN3753600	Knob				
2	1	F1301608	Handlebar (Gearbox)				
3	1	YN1054900	Split pin				
4	1	F1301609	Handlebar P.D.F.				
6	1	F1301605	Lever				
7	1	3916010	Washer				
8	1	3024010R	Seeger				
9	1	YN5125500	Pin				
10	1	YN5109300	Pin				
11	1	F1051700	Lever				
12	1	N3117950	Spring				
13	1	F1301603	Lever				
14	1	F1291603	Lever				
15	1	F1291604	Sliding block				
16	1	YN4745400	Ball				
17	1	YN3104250	Spring				
18	1	F1050831	Sliding block				
19	1	N0281400	Ring				
20	1	N3101020	Spring				
21	1	F1291661	Cap				
22	1	F1301600	Support				
26	1	F1291605	Frame				
27	1	F1291632	Lever				
28	1	F1061633	Fix plate (Handlebar)				
30	1	F1301622	Plate				
31	1	F1301601	Pin				
33	1	F1301620	Mark (Gear-shift lever)				
34	1	F1301621	Guard				

L91700



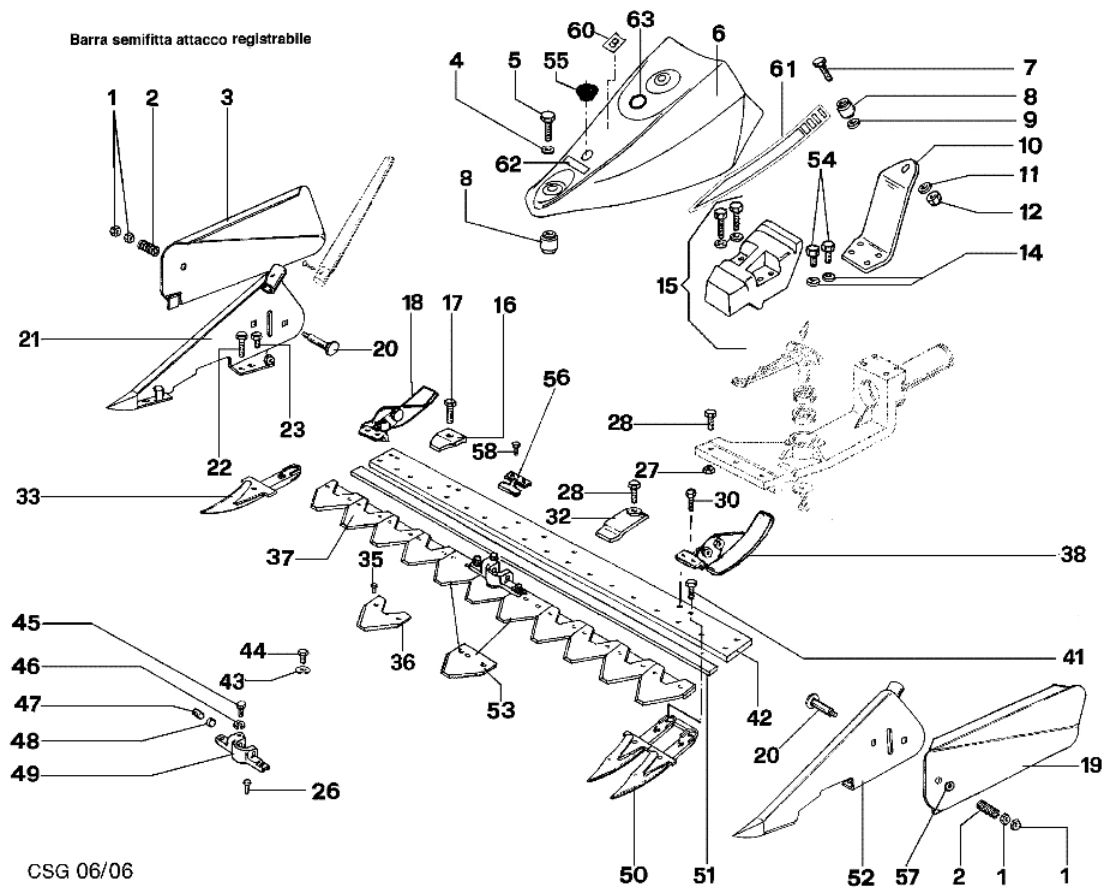
movimento meccanico attacco registrabile
csg 06/06

Ref.	O.ty	Item number	Description	Validity from	Validity till	Notes	Bulletin
9	1	F1073358	Support				
10	1	N1263200	Bearing				
11	1	YN0114900	Seeger				
12	1	YN6335900	Screw				
13	1	L0081100	Washer				
14	1	YN1463650	Nut				
15	1	N2605600	Nipple				
16	1	YN1271100	Bearing				
17	1	F1073106	Shaft				
18	1	N1270400	Bearing				
19	1	YN0136800	Seeger				
20	1	F1073145	Spacer				
21	1	F1073105	Floating head				
22	1	N1258301	Bearing				
23	1	N0205720	Ring		sn 43582		
23	1	N0207500	Ring	sn 43583			
24	1	N4419550	Washer		sn 43582		
24	1	N4429200	Washer	sn 43583			
25	1	N0130000	Seeger				
26	1	F1073206	Clip		sn 43582		
26	1	F1073513	Clip	sn 43583			
27	1	N2605600	Nipple				
31	1	F1073372	Washer				
32	1	N6320500	Screw				
33	1	N2101600	Ring nut				
34	1	N5002850	Spacer				
35	1	N1261350	Bearing				
36	1	F1073190	Spacer				
37	1	F1073191	Pin				
38	1	F1073375	Connecting rod				
43	1	N5005400	Spacer				
44	1	L0038100	Spacer				
45	1	F1073260	Pin				
46	1	N1474500	Nut				
47	1	P0001289	Support kit				



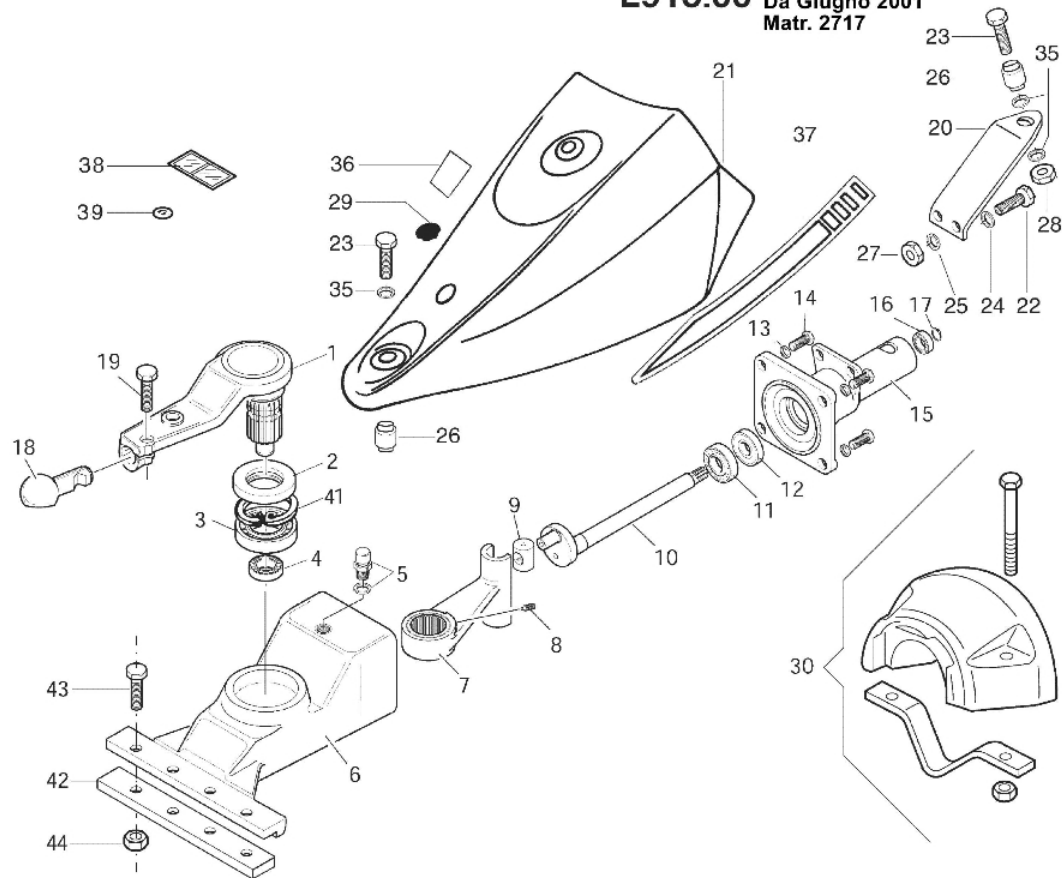
barra speciale attacco registrabile

Ref.	O.ty	Item number	Description	Validity from	Validity till	Notes	Bulletin
1	1	F1303153	Sliding block	10/2000			
2	1	YN6332800	Screw				
5	1	N6245800	Screw				
7	1	F0582687	Plate				
12	1	F1303153	Sliding block	10/2000			
15	1	F1113112	Pressblade (Long)				
16	1	N6321250	Screw	10/2000			
17	1	F1303116	Plate			950	
17	1	F1303117	Plate			1150	
17	1	F1303118	Plate			1270	
17	1	F1303119	Plate			1400	
18	1	F0591593	Slide			1270	
18	1	F0712027	Slide			950	
18	1	F0712031	Slide			1150	
18	1	F1073220	Slide			1400	
22	1	N6322000	Screw				
23	1	N0886600	Rivet				
24	1	F0582688	Tooth (Double)			Dente SF; Tooth SF	
24	1	F1113114	Tooth (Double)				
25	1	F1113113	Tooth				
26	1	F1073216	Blade				
28	1	F1073276	Blade			1150SP	
28	1	F1073277	Blade			1270SP	
28	1	F1073349	Blade			950SP	
28	1	F1073388	Blade			1400SP	
29	1	YN6262200	Screw				
30	1	YN4366700	Grower				
31	1	F1073364	Valve				
32	1	N6433900	Screw				
33	1	F1073261	Rivet				
34	1	F1073363	Clutch driver			Per barra speciale; For special bar	
34	1	Y1073376	Clutch driver			Per barra SF e ESM; For SF bar and ESM	
35	1	YN4366700	Grower				
36	1	3806063	Screw				
37	1	F1073273	Blade				



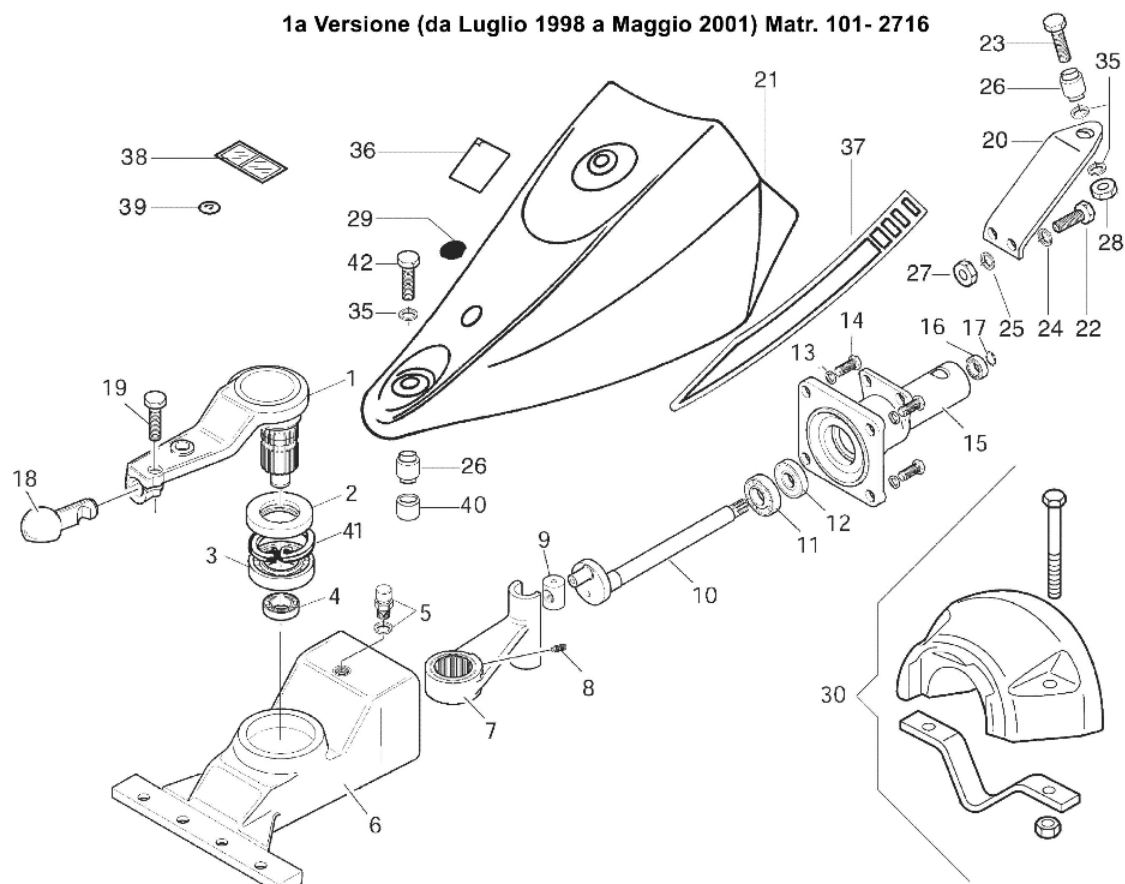
Ref.	Q.ty	Item number	Description	Validity from	Validity till	Notes	Bulletin
1	1	N1468900	Nut				
2	1	N3121900	Spring				
3	1	F0712015	Swath board DX				
4	1	YN4384410	Washer				
5	1	N6399710	Screw				
6	1	YP0001784	Bonnets				
7	1	N6399710	Screw				
8	1	N4924000	Silent block				
9	1	YN4384410	Washer				
10	1	F1303126	Support				
11	1	YN4384410	Washer				
12	1	YN1470200	Nut				
14	1	YN4366700	Grower				
15	1	L0105500	Set (Counterweight)				
16	1	F0582687	Plate				
17	1	YN6332800	Screw				
18	1	F1303153	Sliding block	10/2000			
19	1	F0741634	Swath board SX				
20	1	YN6404000	Screw				
21	1	F0741609	Shoe DX				
22	1	3806094	Screw				
23	1	N6314900	Screw				
26	1	F1073261	Rivet				
26	1	F1073399	Rivet			ESM	
27	1	YN1463650	Nut				
28	1	YN6332800	Screw				
30	1	N6321250	Screw	10/2000			
32	1	F0582686	Pressblade (Short)				
33	1	F0582738	Tooth (Single)				
35	1	N0886600	Rivet				
36	1	YF0582091	Blade				
37	1	F1073383	Blade			950SF	
37	1	F1073384	Blade			1150SF	
37	1	F1073385	Blade			1270SF	
37	1	F1073386	Blade			1450SF	
38	1	F1303153	Sliding block	10/2000			
41	1	N6322000	Screw				
42	1	F1303116	Plate			950	
42	1	F1303117	Plate			1150	
42	1	F1303118	Plate			1270	
42	1	F1303119	Plate			1450	
43	1	YN4366700	Grower				
44	1	3806063	Screw				
45	1	YN6262200	Screw				
46	1	YN4366700	Grower				
47	1	N6433900	Screw				
48	1	F1073364	Valve				
49	1	F1073363	Clutch driver			Per barra speciale; For special bar	
49	1	Y1073376	Clutch driver			Per barra SF e ESM; For SF and ESM bar	
50	1	F0582688	Tooth (Double)				
51	1	F0591593	Slide			1270	
51	1	F0712027	Slide			950	
51	1	F0712031	Slide			1150	
51	1	F1073220	Slide			1450	
52	1	F0741635	Shoe SX				
53	1	F1073378	Blade				
53	1	F1073377	Blade				
54	1	3806063	Screw				
55	1	N5265900	Cap				
56	1	F0582685	Pressblade (Long)				
57	1	YN4387700	Washer				
58	1	YN6332800	Screw				
60	1	F1302127	Mark b	04/2004			
61	1	F1302131	Mark	04/2004		DX; RIGHT	
61	1	F1302132	Mark	04/2004		SX; LEFT	
62	1	N5381650	Mark (danger)				
63	1	N5383405	Mark (Protection)				

L915.00 Da Giugno 2001
Matr. 2717

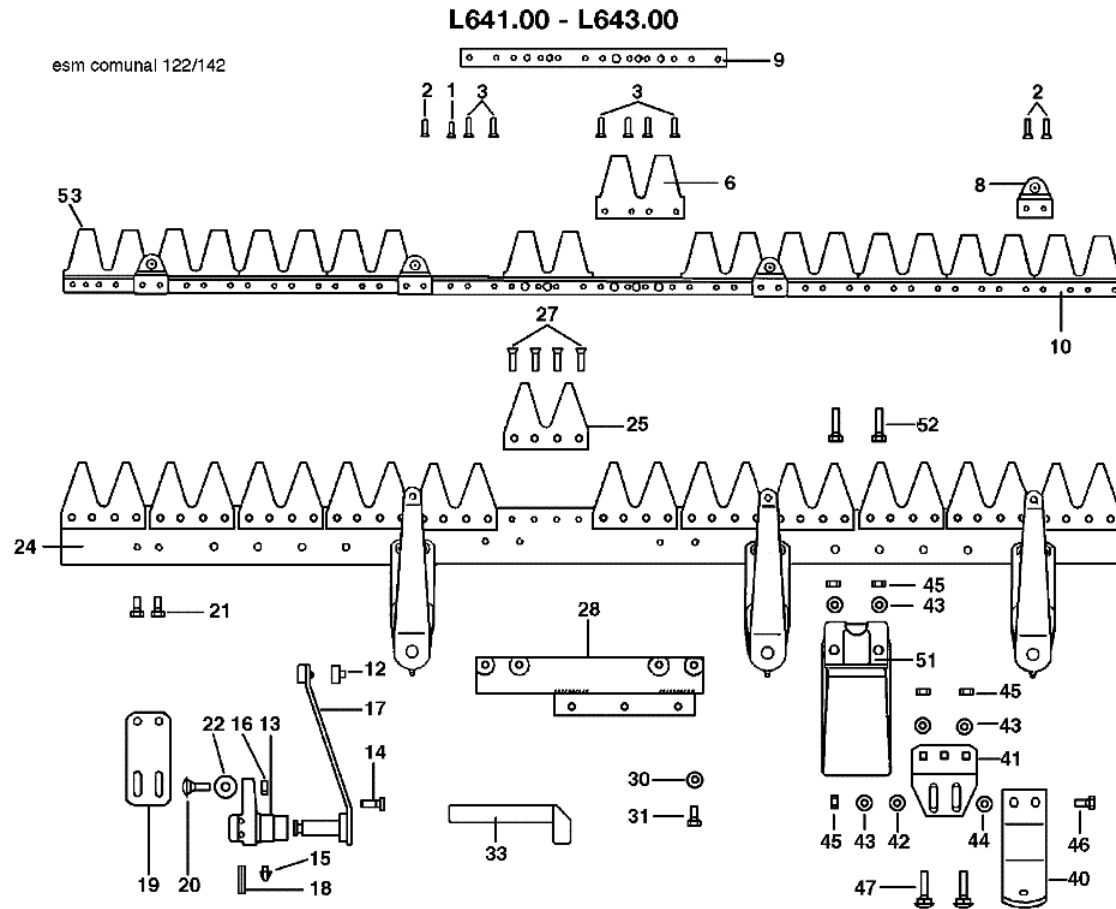


Ref.	O. ty	Item number	Description	Validity from	Validity till	Notes	Bulletin
1	1	F1303156	Connecting rod				
2	1	YN0222805	Ring				
3	1	N1289200	Bearing				
4	1	YN1263700	Bearing				
5	1	K4101420	Cap				
6	1	F1303100	Half case				
7	1	F1302102	Support				
8	1	N6251000	Screw				
9	1	F1303106	Switch				
10	1	F1303108	Shaft				
11	1	N1272501	Bearing				
12	1	N0210045	Ring				
13	1	3819014	Grower				
14	1	3806094	Screw				
15	1	F1303101	Cover				
16	1	N1263200	Bearing				
17	1	YN0114900	Seeger				
18	1	F1303155	Pin				
19	1	3806094	Screw				
20	1	F1303125	Support				
21	1	YP0001784	Bonnets				
22	1	YN6267000	Screw				
23	1	N6399710	Screw				
24	1	YN4366700	Grower				
25	1	3916008R	Washer				
26	1	N4924000	Silent block				
27	1	320000028	Nut				
28	1	YN1470200	Nut				
29	1	N5265900	Cap				
30	1	L0105700	Set (Counterweight)				
35	1	YN4384410	Washer				
36	1	F1302127	Mark b	04/2004			
37	1	F1302131	Mark	04/2004		DX; RIGHT	
37	1	F1302132	Mark	04/2004		SX; LEFT	
38	1	N5381650	Mark (danger)				
39	1	N5383405	Mark (Protection)		03/2004		
41	1	N0140800	Seeger				
42	1	L0081100	Washer				
43	1	YN6335900	Screw				
44	1	YN1463650	Nut				

1a Versione (da Luglio 1998 a Maggio 2001) Matr. 101- 2716



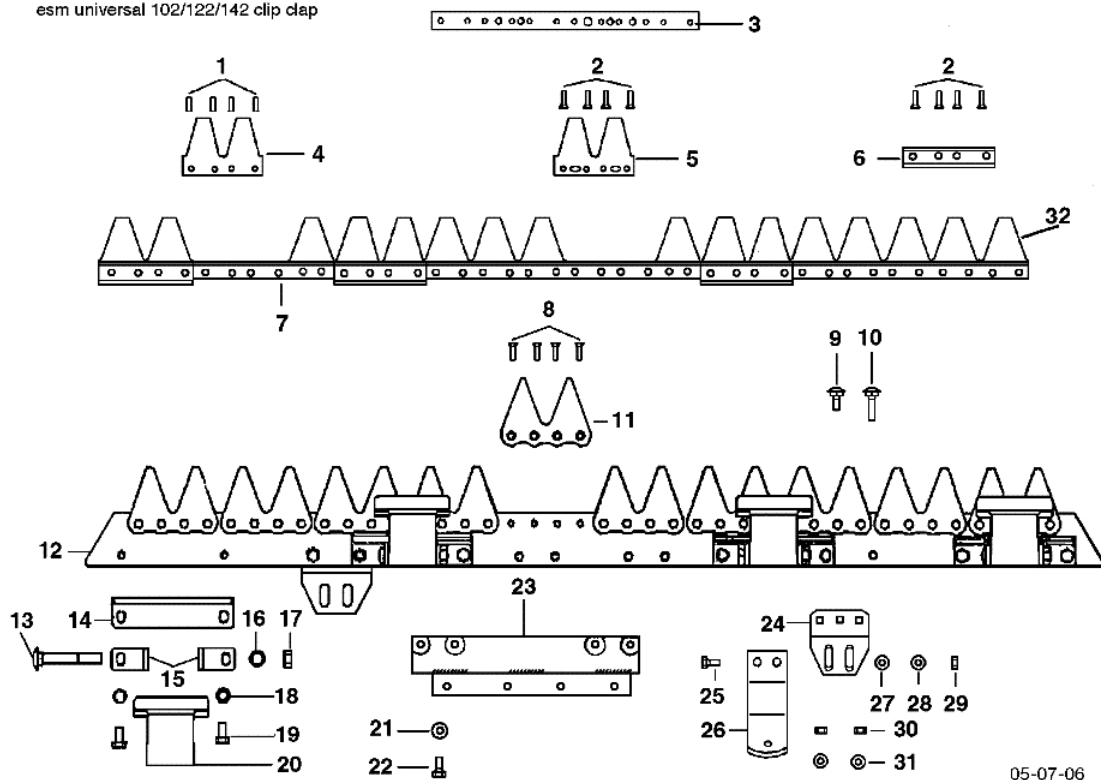
Ref.	O.ty	Item number	Description	Validity from	Validity till	Notes	Bulletin
1	1	F1303105	Connecting rod (External)				
2	1	YN0222805	Ring				
3	1	N1289200	Bearing				
4	1	YN1263700	Bearing				
5	1	K4101420	Cap				
6	1	F1303100	Half case				
7	1	F1303102	Connecting rod				
8	1	N6251000	Screw				
9	1	F1303106	Switch				
10	1	F1303108	Shaft				
11	1	N1272501	Bearing				
12	1	N0210045	Ring				
13	1	3819014	Grower				
14	1	3806094	Screw				
15	1	F1303101	Cover				
16	1	N1263200	Bearing				
17	1	YN0114900	Seeger				
18	1	F1303107	Pin				
19	1	N6374000	Screw				
20	1	F1303125	Support				
21	1	P0001254	Hood				
22	1	YN6267000	Screw				
23	1	N6399710	Screw				
24	1	YN4366700	Grower				
25	1	3916008R	Washer				
26	1	N4924000	Silent block				
27	1	320000028	Nut				
28	1	YN1470200	Nut				
29	1	N5265900	Cap				
30	1	L0105700	Set (Counterweight)				
35	1	YN4384410	Washer				
36	1	F1292118	Mark B				
37	1	F1303147	Mark				
38	1	N5381650	Mark (danger)				
39	1	N5383405	Mark (Protection)				
40	1	F1303133	Spacer				
41	1	N0140800	Seeger				
42	1	YN6402600	Screw				



Ref.	O.ty	Item number	Description	Validity from	Validity till	Notes	Bulletin
1	1	R1504705	Rivet				
2	1	R1504706	Rivet				
3	1	F1073441	Rivet				
6	1	R1504709	Shear blade (Double)				
8	1	R1504764	Support				
9	1	F1073438	Plate				
10	1	F1073434	Back (Blade) cm122				
10	1	F1073435	Back (Blade) cm142				
12	1	R1504773	Bushing				
13	1	R1504768	Support				
14	1	R1504769	Screw				
15	1	R1504770	Nipple				
16	1	R1504723	Nut				
17	1	R1504772	Swing arm				
18	1	R1504771	Pin				
19	1	F1073436	Plate				
20	1	F1073442	Screw				
21	1	N6249300	Screw				
22	1	R1504776	Washer				
24	1	F1073417	Back (Bar) cm.122				
24	1	F1073418	Back (Bar) cm.142				
25	1	F1073422	Tooth (Double)				
27	1	N0892500	Rivet				
28	1	F1073401	Connection plate				
30	1	YN4367200	Washer				
31	1	YN6254600	Screw				
33	1	F1073415	Lever (Fitting)				
40	1	F1073428	Sole				
41	1	F1073430	Attachment (Sole)				
42	1	YN4369110	Washer				
43	1	YN4367200	Washer				
44	1	F1073443	Washer				
45	1	R1504723	Nut				
46	1	YN6267000	Screw				
47	1	R1504720	Screw				
51	1	F1073432	Slide shoe				
52	1	YN6272400	Screw				
53	1	F1073409	Shear blade cm.122				
53	1	F1073410	Shear blade cm.142				

L635.00 - L637.00 - L639.00

esm universal 102/122/142 clip clap



05-07-06

Ref.	O. ty	Item number	Description	Validity from	Validity till	Notes	Bulletin
1	1	R1504705	Rivet				
2	1	F1073455	Rivet				
3	1	F1073501	Plate				
4	1	F1073451	Shear blade (Double)				
5	1	F1073452	Shear blade (Double)				
6	1	F1073453	Slide				
7	1	F1073502	Back (Blade) cm.102				
7	1	F1073503	Back (Blade) cm.122				
7	1	F1073504	Back (Blade) cm.142				
8	1	N0892500	Rivet				
11	1	F1073456	Tooth (Double)				
12	1	F1073505	Back (Bar) cm.102				
12	1	F1073506	Back (Bar) cm.122				
12	1	F1073507	Back (Bar) cm.142				
13	1	F1073462	Screw				
14	1	F1073458	Plate				
15	1	F1073459	Frame				
17	1	N1464800	Nut				
19	1	3806063	Screw				
20	1	F1073457	Pusher				
21	1	YN4367200	Washer				
22	1	YN6254600	Screw				
23	1	F1073401	Connection plate				
24	1	F1073430	Attachment (Sole)				
25	1	YN6267000	Screw				
26	1	F1073428	Sole				
27	1	YN4369110	Washer				
28	1	YN4367200	Washer				
29	1	R1504723	Nut				
32	1	F1073467	Shear blade cm.102				
32	1	F1073468	Shear blade cm.122				
32	1	F1073469	Shear blade cm.142				